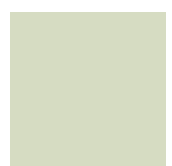


2026



Consumer Guide to Continuing Care



A user-friendly guide to New York's not-for-profit and public long term care services and housing options.

LeadingAge[®]
New York

**ArchCare
helps meet
your healthcare
needs at
every stage.**



Short-Term Rehabilitation

Receive a full range of therapies at our nursing homes to transition from hospital to home after illness or surgery.

Home Care Services

Get personalized in-home support from our dedicated team for a transition home from the hospital or every day needs.

Program of All-Inclusive Care for the Elderly (PACE)

Our all-inclusive program helps older adults live at home for as long as possible with 24/7 support from a team of clinicians.

Hospice and Palliative Care

Calvary provides compassionate, comprehensive care that improves quality-of-life for those with complex or end-of-life illnesses.



Where Life Continues



The Continuing Care Community
of the Archdiocese of New York



Serving New York with excellence since 1899.

For more information visit us at:
archcare.org

*The 2026 LeadingAge New York
Consumer Guide to Continuing Care
is published by*



13 British American Blvd., Suite 2
Latham, NY 12110-1431
Tel: 518-867-8383
Fax: 518-867-8384
www.leadingageny.org

LeadingAge New York

Editor:
Earl D. Gifford III

Publisher:
Kristen Myers

Advertising Sales Director:
Earl D. Gifford III

Marketing Account Specialist:
Earl D. Gifford III

Design & Layout:
Lane Press
11 Kairnes St., #2
Albany, NY 12205

© 2025 LeadingAge New York
All rights reserved.

*The contents of this publication may
not be reproduced by any means,
in whole or in part, without the prior
written consent of the publisher.*

*Please support our advertisers;
they have made this
publication possible*

Table of Contents

WELCOME

PAGE 5



INTRODUCTION

PAGE 6



FACILITIES LISTED BY COUNTY

PAGE 27



PACE/MLTC

PAGE 79



ADULT DAY HEALTH CARE PROGRAMS LISTED BY COUNTY

PAGE 81



ADVERTISERS INDEX

PAGE 88



The Professor



The Social Butterfly




Your place to thrive.
A community for every story.

At Jefferson's Ferry, we celebrate the unique passions and talents that make each individual special. Here, every resident brings their own spark, creating a vibrant environment where everyone can thrive. Discover a place where you are not just welcomed—but celebrated.

Ready to find your perfect fit?
Call 631-675-5550
or visit jeffersonsferry.com today!






LONG ISLAND'S PREMIER LIFE PLAN COMMUNITY
ONE JEFFERSON FERRY DRIVE, SOUTH SETAUKET, NEW YORK 11720

Where *Culture* Enriches *Care*

Discover artful living in the Quaker tradition, where you can continue to grow, flourish, and make a difference. Where opportunities to learn, create, and connect are built into everyday life. Where you can design your own lifestyle with confidence, knowing Lifecare is protecting your future health needs.



Discover Kendal on Hudson.
Call us today at **866-907-8181**
or visit www.kohud.kendal.org.



866-907-8181 | www.kohud.kendal.org
1010 Kendal Way | Sleepy Hollow, NY 10591










A not-for-profit Life Plan Community serving older adults in the Quaker tradition

Experience **resort-style** living at New York's
only **equity-based** life plan community.



Call (631) 353-6880 to schedule your visit.



Live better.

Greenport, NY
www.peconiclanding.org
@peconiclanding





Live Young at Heart Wherever You Choose!

Getting older doesn't have to mean giving up your independence or a fulfilling quality of life. There are plenty of choices to help you live life as young as you feel.

Not-for-profit providers of care and services are leading the way in innovative and consumer-based options to help seniors stay at home, meet new people, take part in activities and, most importantly, always live an enriching and fulfilling life.

Explore our website to learn more and find providers to help you keep living life to the fullest!



@LiveYoungAtHeartAlways

www.liveyoungatheart.org





A PLACE WHERE
YOU TRULY BELONG

Woodland Pond

AT NEW PAITZ

Experience the Hudson Valley's most rewarding retirement lifestyle at Woodland Pond, where growth, compassionate care and meaningful connections come naturally. Woodland Pond isn't just a place to live - it's a place to thrive. Become part of a vibrant community where

friendships flourish and every day is an opportunity to embrace life to its fullest.

Join our waitlist now and take the first step toward the retirement you've been planning for.

MID-HUDSON VALLEY'S ONLY
CONTINUING CARE RETIREMENT COMMUNITY

845.256.5521 | WOODLANDPONDNP.ORG
100 WOODLAND POND CIRCLE, NEW PAITZ, NY 12561

Secure Your Future

JOIN OUR WAITLIST TODAY
845.256.5521

INTRODUCTION

Welcome!

Choosing the right kind of care for you or someone you love can be a daunting and emotional task, and most people who start out on this journey feel overwhelmed and confused by the vast array of options – not to mention acronyms.

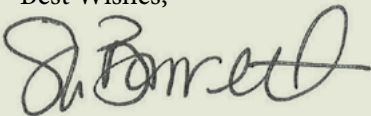
The good news is that this guide is the very best resource in the state of New York for exploring the options within senior living and services. Prepared for you by us at LeadingAge New York, this guide will help you make the best decisions for you, your family and loved ones.

We are an association of not-for-profit and government-sponsored members. Our members are mission-driven to provide the best care for you or your loved one. This guide will introduce you to the entire range of care, from housing for independent seniors to home care, which helps seniors age in place, to assisted living, skilled nursing and all the options along the way. We'll also introduce you to the continuing care retirement community, a campus-like setting that encompasses every level of care in one location, from independent housing to skilled nursing and allows you to access the level you need, when you need it, without leaving your community.

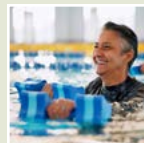
I strongly encourage you to contact any of our member organizations and facilities listed in this guide.

While this guide is a good place to start, I strongly urge you to visit the organization or service provider you're considering. Many organizations offer trial stays, so be sure to ask about that as well. In the coming pages, you'll find other questions you should ask, but don't limit yourself to those; when you're looking at something as life changing as senior living and services, every question is important.

Best Wishes,



Sebrina Barrett
President and CEO
LeadingAge New York



What is “Continuing Care”?

As used in this guide, “continuing care” refers to a wide variety of long term care, post-acute care, and senior housing services and supports. It is particularly helpful to distinguish between long term care and post-acute care services when exploring service options.

Post-acute care is delivered on a short-term basis following a hospitalization, with the goal of returning the patient to his/her prior health and functional status. It is provided by home care agencies, nursing homes, and inpatient and outpatient rehabilitation facilities.

Long term care, by contrast, often involves assistance with the activities of daily living and management of chronic conditions over longer periods of time. Like post-acute care, it is often delivered by nursing homes and home care agencies. However, it also involves a broad array of health care and residential services offered through Medicaid waiver programs, adult day health care programs, adult homes, enriched housing programs, assisted living facilities, hospice programs, and continuing care retirement communities. It also includes social supports such as home-delivered meals, transportation, environmental modifications, social adult day programs, and senior centers. And it includes various types of housing that offer social supports to residents, including subsidized senior housing with service coordination, Naturally Occurring Retirement Communities (NORCs) and Neighborhood NORCs, market-rate senior housing communities, and Villages.

Older adults and younger people with disabilities can receive both post-acute care and long term care, and service providers often provide both types of services as well. These services can be provided in an individual's own home, in senior housing, in a community-based setting like an adult day center, or in a specialized facility like a nursing home.

The remainder of this section provides further information to help you navigate the following subjects: (1) residential living options; (2) options at home and in the community; (3) Medicaid and Medicare managed care; (4) Medicare Part D prescription drug coverage; and (5) how to take charge of selecting care and service options.

Residential Living Options

There are a variety of residential programs in New York State designed to care for older adults and individuals with disabilities of all ages who for many different reasons are no longer able to live safely in private residences in the community, or no longer wish to do so. All of these programs offer varying degrees of assistance with activities of daily living, meals, and sometimes health-related services.

1. Nursing Homes

A nursing home, also known as a nursing facility or skilled nursing facility, provides 24-hour medical, nursing, therapy, and other services to frail elderly individuals and persons of all ages with disabilities. These facilities are licensed by the New York State Department of Health (NYSDOH). A nursing home offers a protective, therapeutic environment for those who need rehabilitative care or can no longer live independently because of chronic physical or mental conditions that require 24-hour-a-day care. Nursing homes are the most intensive and therefore often the most expensive level of continuing care given the wide range of services they provide.

What are patient assessments, and why are they important?

Before being admitted into a nursing home, the prospective resident must undergo a screening process to determine if a lower level of care would be more suitable for him/her. The screening process begins with a health care professional completing a Patient Review Instrument (PRI). The PRI is used to assess the applicant's ability to complete "activities of daily living" such as walking, bathing, and using the toilet, as well as clinical conditions and the need for specialized services. This health assessment helps to identify physical, medical, social, and psychological issues the applicant faces.

If the person is in the hospital and is being considered for direct transfer to a nursing home, hospital social services or discharge planning staff will assist in completing the PRI and the screening process to determine whether nursing home placement is appropriate. If the person is at home or in a community-based program, a Certified Home Health Agency should be contacted to complete the PRI. Under these circumstances, a home visit is usually necessary. It is important to give the evaluator honest, accurate, and complete information during this visit.

If the individual is a Medicaid beneficiary and is enrolled in a Medicaid managed care plan (see more information on managed care below), the plan will be involved in the coordination of the assessment process.

Once accepted for nursing home placement, the person will also undergo a much more extensive assessment process within the nursing home using a form called the Minimum Data Set (MDS). The MDS comprehensively reviews the person's history and needs. It is a key part of the resident's overall assessment and is used to develop and maintain an individualized care plan.

Services Available

A nursing home offers a full array of personal care, dietary, therapeutic, medical, rehabilitative, social, spiritual, recreational, housekeeping, and nursing services. Residents are involved in decisions about their care and receive services based on their individual needs. While many residents need care for extended periods due to chronic illness, a growing number of other patients enter a nursing home for a short stay for restorative therapy services. This may be after surgery or an accident, or to recuperate from a

serious illness before returning home. These types of short-term stays are sometimes referred to as short-term rehabilitation, subacute care, post-acute care, transitional care, and/or post-acute rehabilitation.

Many nursing homes also offer specialized services such as wound care, intravenous therapies, Alzheimer's/dementia care, bariatric care, dialysis services, cardiopulmonary rehabilitation, hospice and palliative care, and respite (i.e., scheduled short-term stay) care. Some nursing homes also have specialized units or beds to care for individuals who have AIDS/HIV, are dependent on mechanical ventilators, need care for brain injuries or strokes, have neurobehavioral conditions, or are children or young adults with complex medical conditions and disabilities.

Living Arrangements

Living arrangements will vary depending upon the nursing home. Semi-private or private rooms are available in most facilities, with private or shared baths.

Payment

Many people incorrectly assume that the federal Medicare program will finance their long term care needs, particularly for nursing home care. In fact, Medicare pays for only a small number of people in any nursing home setting, and only for a limited amount of time for individuals who need rehabilitation therapy or complex medical care following a hospital stay. To receive Medicare-covered services in a nursing home, an individual must meet very strict criteria, including a minimum three-day qualifying inpatient stay in a hospital. Eligibility for this option should be discussed with the discharging hospital, the admitting nursing home, or the local department of social services or office for the aging.

On average, about 72 percent of the residents in New York's nursing homes have their care covered by the Medicaid program. Medicaid is a joint federal-state program administered at the local level by local departments of social services to help pay for medical care for those who cannot afford to do so on their own. Medicaid beneficiaries qualify for the program by meeting certain income and asset limits.

Some nursing home residents apply for Medicaid in order to pay for nursing home care, and others begin receiving Medicaid benefits while living in the community. Individuals who apply for Medicaid to pay for nursing home care are not required to enroll in a managed care plan, and Medicaid will pay for their nursing home care directly. As discussed in more detail below, individuals receiving long term care services in the community are required to enroll in a managed long term care plan to receive Medicaid coverage of their services. When a community-based managed long term care plan member is admitted to a nursing home, the managed long term care plan will pay for the first three months of long-term nursing home care. If more than three months of nursing home care is needed, the individual will disenroll from the managed long term care plan, and Medicaid will pay for the individual's nursing home care directly.

Often, a resident enters a nursing home and initially pays with his/her own money. When that money is mostly exhausted (also known as “spent down”), the individual can apply to Medicaid for coverage. Spend-down laws allow the person’s non-institutionalized spouse (if there is one) to keep a house, a car, and a reasonable amount of income and assets. In other words, community spouses do not need to “impoverish” themselves by spending down all of their money to obtain Medicaid coverage for their spouses who need services. Since these laws are complicated and subject to change, LeadingAge New York suggests discussing them with the admitting nursing home or the local department of social services.

Questions

When deciding on a nursing home for services, consider asking the following questions:

- Is the nursing home well-maintained, pleasing, and cheerful?
- Does the staff seem friendly, caring, and accommodating to residents and visitors?
- Do the residents appear comfortable, well-groomed, and involved in meaningful activities?
- Does the nursing home conduct resident and staff satisfaction surveys, and if so, is this information available for review?
- What are the findings from the most recent state inspection, and can I discuss them with a representative from the nursing home?
- Are amenities such as private rooms, cable service for individual televisions, and private telephones available? At what cost?
- What activity programs and special events are held at the nursing home or off-site?
- What religious/spiritual programs are offered?
- How many physicians are on staff? Do I have a choice between the facility’s staff physician and my personal physician?
- Does the nursing home have staff providing occupational, physical, and speech therapy?
- Should hospitalization become necessary, which hospital does the facility use?
- Which Medicaid and Medicare managed care plans does the facility have agreements with?
- How many residents are under the care of one nurse aide on the day shift? What staff coverage is available on evenings, nights, and weekends?
- Who coordinates admissions? How are the rooms assigned? Is there an orientation for new residents?
- Is there a family council to provide input into the kinds of programs and problems the facility may have? How often does the residents’ council meet?
- What may residents bring with them? Is there room for a favorite chair, photographs, and wall hangings?

2. Adult Care Facilities and Assisted Living

Adult Care Facilities (ACFs) and assisted living serve individuals who cannot or do not want to remain at home, but do not need continuous nursing care as would be provided in a nursing home. These settings provide assistance, while emphasizing the resident's autonomy and independence. It is not surprising that these options are popular, since they offer “home-like” settings and can be less expensive than some alternatives. In addition to providing long-term residential services, many assisted living facilities also allow short-term stays to give family caregivers a break, called “respite” care.

There are several categories of licensure within the umbrella terms of “ACF” and “assisted living,” and they all provide a similar package of services. Some have additional licensure or certification to provide specialized services or accept Medicaid benefits. All are licensed and overseen by the NYSDOH.

Two types of ACFs that typically serve older adults are adult homes and enriched housing programs. Both help with activities of daily living, assistance with medication administration, monitoring, supervision, case management, activities, and housekeeping. The biggest difference is that enriched housing is more of an apartment model with a kitchen, while the resident unit in an adult home room does not have a kitchen. The adult home has higher staffing requirements and must provide three meals a day, whereas the enriched housing resident is presumed to be more independent, preparing some of their own meals and not necessarily requiring overnight staff. There is much variation, however. The enriched housing model has evolved so that many operate much like adult homes, with the layout of the living space being the most significant difference. Either model may have shared or private rooms.

Services Available in All ACFs

Regardless of the category, all ACFs (both adult homes and enriched housing) offer:

- Nutritious meals;
- Hospitality services, including housekeeping and laundry;
- Case management;
- Monitoring and supervision;
- Activities and recreational opportunities;
- Personal care services, including help with grooming, dressing, and bathing; and
- Assistance with medications.

Some ACFs may have additional licensure, which is where the term “assisted living” comes in. There are two categories of licensure for assisted living in New York State – the Assisted Living Residence (ALR) and the Assisted Living Program (ALP). This additional licensure enables ACFs to offer additional and specialized services, as discussed on the next page.

Assisted Living Residences

ALRs provide the same package of services that an ACF does, but this licensure allows them to use the term “assisted living.” Some ALRs are also approved by the NYSDOH to provide specialized services for people with Alzheimer’s disease or other cognitive impairments, and these are called Special Needs Assisted Living Residences (SNALRs). These settings have specialized programming, services, staffing, and environment designed for people with these special needs. People with dementia or Alzheimer’s disease can live in “basic” assisted living or even an ACF, but SNALRs are for those who need a specialized environment to ensure their needs are met.

With additional certification, ALRs can also allow residents to “age in place.” These Enhanced Assisted Living Residences (EALRs) can retain residents who would otherwise have to go to a higher level of care such as a nursing home. The EALR can provide or arrange for nursing care and other additional services in the facility as a resident’s needs increase. These added services can include things like assistance walking, navigating stairs and transferring; incontinence care; assistance with medical equipment, and nursing services. Most people who need 24-hour nursing or medical care will need a higher level of care, however. EALRs may designate a certain number of enhanced slots and thus may provide enhanced care to all of their residents, or only a portion of their residents. In addition, EALRs can determine what types of “enhanced” services they will provide. This is spelled out in the admission agreement, and the EALR should be able to describe their services to an interested consumer and let them know how many enhanced residents they can serve. It is important to understand that, because of these variables, each EALR is different.

Both Special Needs and Enhanced ALRs provide the basic services outlined above under “Services Available in All ACFs,” but also meet additional safety and staffing requirements. ALRs can be certified to provide Special Needs and/or Enhanced services, or simply provide “basic” ALR services.

Assisted Living Program

The ALP is the only assisted living option in New York State that can accept Medicaid as payment, although ALPs also accept individuals who can pay for services out of their own funds.

Combining the services of an ACF and a home care agency, the ALP can care for people who are medically eligible for nursing home placement but can manage in a less medically intensive, lower-cost setting. The ALP provides all the services of an ACF, but also provides or arranges for personal emergency response services, nursing, therapies, certain medical supplies and equipment, and home health services. The ALP can retain people whose needs exceed those that can be met in an ACF; however, certain circumstances may require the resident to seek a different level of care. For example, if the resident requires continual nursing or medical care, they would not be appropriate for the ALP.

Payment for ACFs and Assisted Living

Any ACF or assisted living facility should be able to explain their charges and the services they cover.

Most often, residents and their families pay for ACF or assisted living services out of their own funds. Medicare *does not* cover ACF or assisted living services. Currently, there are limited options for low-income individuals. In New York, the ALP is the only Medicaid-funded assisted living option. Some ACFs accept individuals who receive Supplemental Security Income (SSI) and/or State Supplement Program (SSP) benefits, but the established rate of payment for beneficiaries living in ACFs is far below what it actually costs to care for residents. Thus, many ACFs that accepted that rate have closed, and remaining options are limited.

Some veterans or spouses of veterans may be eligible for certain benefits that can assist in paying for ACF or assisted living services, dependent on specific eligibility criteria established by the Veterans Administration. In addition, some long term care insurance policies will cover assisted living, though individual circumstances and policies will differ.

The state currently has a Special Needs Assisted Living Voucher Program, which assists an SNALR resident in paying the monthly rate if the individual meets specified criteria. The individual must have spent down resources to pay for care over a specified amount of time, meet income criteria, and reside in a participating SNALR. The program is subject to state budget funding, which limits how many people can be supported by the program at any given time. A wait list may be developed if the program reaches its budgetary limits. More information about the program can be found at https://www.health.ny.gov/facilities/adult_care/voucher/. Questions about the program can be directed to the NYSDOH at ALTCteam@health.ny.gov.

At present, Medicaid managed care does not cover assisted living services, but this may change in the future. Managed care may cover services provided to participants residing in assisted living or ACFs, such as home care. When this arrangement occurs, the facility will coordinate services with the managed care plan.

Questions

When deciding on assisted living or an ACF for services, consider exploring the following:

- Is assisted living or an ACF appropriate, based on an assessment of physical, financial, mental, and lifestyle needs? If needed, professional help is available to assist with this process. Ask your health care provider for information.
- What are the criteria for admission to the setting you are considering? How is the need for services determined?
- What services are included in the basic plan, and what services are available for an additional fee? Are the services you need covered in a single monthly payment, or do you pay for the specific services individually?
- What is the dining environment like?
- What religious/spiritual programs are offered?
- Does the leadership in the organization seem to know the residents and interact with them?
- Are the staff friendly and professional?
- If you have specialized needs, ask how your needs would be addressed.
- Can this setting meet your anticipated *future* needs? If you have a degenerative disease, for example, would you be able to stay, or would you have to move on to another setting?
- What happens if you deplete your financial resources? Would you have to move?
- Are there any other circumstances under which you could have to leave the ACF or assisted living setting?
- If you have long term care insurance, Medicaid, SSI/SSP, and/or Veterans benefits, does the setting you are interested in accept that as payment?
- What sorts of relationships does the setting have with nursing homes, hospitals, and home care agencies, should you need more care or a different type of care?
- Does the setting offer respite or a short-term stay? If so, this could be a great way to determine if a particular place is right for you.

3. Senior Housing

Senior housing properties – which can go by other terms such as “independent living,” “retirement housing,” or “senior apartments” – are typically building complexes comprised of multiple apartments, detached homes, or other unit types for adults aged 55+ able to live independently, although minimum age requirements may be higher than 55 and some properties must admit younger individuals with a disability. Senior housing offers privacy and independent living in buildings that are safe and well-maintained. Many are architecturally designed to address some of the physical limitations that growing older may bring. For example, bathrooms may be equipped with handrails and grab bars, and electrical outlets may be placed within easier reach. Many are also equipped with 24-hour

emergency call systems. These housing options provide a secure residential environment, but do not directly provide the health care or personal care services associated with nursing homes or assisted living. Instead, those services may be available through separate partnerships with home care agencies or other providers.

Services Available

Senior housing may be provided in a stand-alone building or as part of a retirement community that offers other services. Many senior housing providers also offer or can connect tenants with a variety of supportive services such as service coordination, meals, transportation, housekeeping, social activities, counseling, recreational programs, day trips, and other concierge-like services.

Payment

Monthly rents vary depending on the size of the housing unit, the location, the services offered, and the income group the building is designed to serve. “Subsidized housing,” which can also be referred to as “low-income housing,” “HUD housing,” “affordable housing,” or “income-restricted housing,” is a type of senior housing that requires applicants to meet certain income qualifications to be considered for an apartment. Subsidized senior housing is generally overseen by the U.S. Department of Housing and Urban Development (HUD) or New York State Homes and Community Renewal (HCR).

“Market-rate” senior housing is not subsidized by the government and is open to individuals whose income enables them to pay the monthly rents and any entrance fee typical for that geographic region and type of facility.

Questions

When deciding on senior housing, consider asking the following questions:

- Is the housing located close to family, doctors, pharmacy, grocery, shopping, houses of worship, or public transportation?
- Is there a security deposit? Are there entrance fees? If so, is the deposit or fee refundable upon leaving?
- What is the monthly rent? How much does it increase each year?
- Are pets allowed? If so, under what conditions?
- Are there other charges for services or meals?
- Does the community have a Service Coordinator on-site?
- Is transportation offered or coordinated?
- What types of floor plans are available? Can they be adapted as tenants “age in place”?
- What is the community’s policy when a resident needs additional health care services?
- In market-rate housing, what would happen if you depleted your financial resources? Would you have to move?

4. Continuing Care Retirement Communities

Continuing Care Retirement Communities (CCRCs) are unique because they offer a full range of living arrangements for their residents – independent housing, assisted living/Adult Care Facility, and nursing home – within one community. This arrangement allows a person to enter the community as an independent housing resident, and access assisted living or nursing home care as their needs change, without having to move out of the community. Within CCRCs, the independent housing options typically range from small and large apartments to townhouses and cottages. Assisted living options can include Enhanced programs, which allow residents to remain in that level of care longer even as their needs increase, as well as Special Needs programs that offer memory care services.

In addition to providing living arrangements and a range of health-related services and supports, CCRCs also provide their residents with the amenities and comforts of a community. Residents often have access to health clubs, swimming pools, conference centers, medical suites, dedicated worship centers, convenience stores, beauty salons, and a choice of dining options. CCRCs host organized social events, provide recreational activities, and offer transportation to venues outside of the community. They may also offer guest quarters for visiting family members and friends.

CCRCs provide housing and health-related services for their residents under an agreement effective for the life of the resident or for a specific period. There are three main types of agreements or contracts within CCRCs. “Type A” contracts, also known as “life care” agreements, include housing, residential services and amenities, and unlimited long term care without substantial increases in periodic payments. Modified (“Type B”) contracts include housing, residential services and amenities, and limited long term care without substantial increases in periodic payments. Fee-for-service (“Type C”) contracts include housing, residential services and amenities, and guaranteed access to health care services by paying prevailing rates. Essentially, in this model, residents pay only for the health care services they have used.

Payment

Residents pay an entrance fee – most often from the sale of their home – and monthly charges out of their own funds and/or from long term care insurance benefits. In exchange, they have guaranteed access to the entire range of services provided in the community. CCRCs are an attractive alternative to many older adults, since they provide security in knowing that their future health care and other needs will be met by the same organization and that their monthly fee will remain predictable even if the level of services needed changes. This allows the older adult to more readily budget for the cost over time.

Questions

When deciding on a particular CCRC for services, consider asking the following questions:

- What types of contracts does the CCRC offer (i.e., life care, modified, fee-for-service), and what are the entrance and monthly fees associated with each?
- What services are included in the monthly fee? What services are offered for an additional charge?
- What are my current living expenses vs. the costs of living in the retirement community?
- Is there a policy that allows a refund of the entrance fee if I leave the community?
- How long has the CCRC been in business? How about the organization that operates it?
- What kind of health care is available on-site (physicians, dentists, clinic, etc.)?
- What activity programs, educational opportunities, and transportation services are available?
- What opportunities are there for involvement through resident councils and committees?

Options at Home and in the Community

A variety of programs are designed to help older adults remain in their own homes and/or to help family members in coping with their relative's chronic illness or disabilities. These services may be needed on a short-term or long-term basis. While many types of home and community-based services exist for older adults, not all are available in every community.

In New York State, managed long term care (MLTC) is the primary care model for individuals who are both Medicaid and Medicare eligible and need community-based long term care services for 120 days or more. Medicaid beneficiaries aged 21+ who need such care are required to enroll in an MLTC plan. Please see the next section for further information on MLTC.

In-home and community services offered in New York State include home care, adult day services (which include Social Adult Day Care and Adult Day Health Care), hospice care, respite care, home-delivered meals, and senior centers. Again, local availability of these services can vary by community and region.

1. Home Care

Regulated by the NYSDOH, home care is delivered in New York through Certified Home Health Agencies (CHHAs), Licensed Home Care Services Agencies (LHCSAs), and Consumer Directed Personal Assistance Services (CDPAS). CHHAs provide skilled nursing services; physical, occupational, and speech therapy; and home health aide services, which provide help with

activities of daily living (such as laundry, shopping, housekeeping, personal hygiene, and meal preparation). LHCSAs can deliver personal care services to individuals directly or through contracts with CHHAs or managed care plans. Rather than using aides and nurses hired by a CHHA or LHCSA, Medicaid beneficiaries may also opt to hire, train, supervise, and fire their own “personal assistants” through CDPAS programs.

Home care helps individuals who have long-term needs related to a chronic illness or disability, or short-term nursing or therapy needs after a hospitalization. Home care is often an important part of assisted living services and is provided in senior housing settings, as well as in individual homes. The service is also discussed in those sections of this introduction.

Individuals who do not qualify for Medicaid may pay for services with their own funds or access personal care through the New York State Office for the Aging’s (NYSOFA) Expanded In-Home Services for the Elderly Program (EISEP) and Community Services for the Elderly (CSE) program. EISEP and CSE also provide an array of other community-based services, including case management, respite, home-delivered meals, transportation, housekeeping and chore services, and minor home repairs. Payment for services delivered under these programs is on a sliding scale and based on an individual’s level of income.

2. Medicaid Waiver Programs: Nursing Home Transition and Diversion and Traumatic Brain Injury Programs

New York has several Medicaid waiver programs; the Traumatic Brain Injury (TBI) and Nursing Home Transition and Diversion (NHTD) waiver programs are two that serve adult Medicaid beneficiaries. While the programs serve two different populations, they are organized similarly and seek to provide home and community-based supports to enable participants to live in the most integrated setting possible. The NYSDOH oversees both waiver programs and contracts with “Regional Resource Development Centers” to manage these programs throughout the state. The TBI waiver program serves adults who have sustained TBIs, while the NHTD waiver program serves adults who are eligible for nursing home placement.

Participants in both programs are provided with an individualized, well-coordinated plan of care and services to assist them in transitioning to life at home or in the community. Covered services include assistive technology, environmental modifications, transportation, supervision and cueing, transition services, counseling, independent living skills, behavioral interventions and support services, structured day programs, and more. Participants may come from a nursing home or other institution or choose to participate in the waiver to prevent institutionalization. Services may be considered when informal supports; local, state, and federally funded services; and Medicaid State Plan services are not sufficient to ensure the health and welfare of the person in the community, or when waiver services are a more efficient use of Medicaid funds.

3. Adult Day Services

In New York State, adult day services come in two forms – a medical model called “Adult Day Health Care” (ADHC), and a social model called “Social Adult Day Care” (SADC). Adult day services programs offer a safe, secure, stimulating environment for people whose family circumstances allow them to remain in their homes in the evenings (and possibly on weekends), but who need some sort of supervision during the day.

SADC is oriented toward the social aspects of life and may include games, memory orientation exercises, music, dancing, and reading in a safe and supervised environment. These programs also provide a meal, some help with activities of daily living (such as mobility and grooming), and offer supervised field trips and special events. These programs may be located in the community or in ACFs (see the section above on “Adult Care Facilities and Assisted Living”). Some SADC programs are overseen by NYSOFA. Participants can pay for these services with their own funds, and some MLTC plans contract with these programs to provide services to their enrollees. Some programs may have an arrangement with their local office for the aging to provide support for low-income individuals to attend the program.

ADHC offers fun games, activities, and trips during the day, but also has a strong nursing component. These programs are staffed by an integrated health care team, including a registered nurse able to conduct assessments, manage medications, and perform medical tasks. These programs must be sponsored by a nursing home or a hospital. Every ADHC program provides physical, occupational, and speech therapy to people who need these services. In addition, they provide a full range of personal care services (from some help to total assistance with mobility, eating, dressing, bathing, grooming, and toileting), social services, case management, and at least one meal per visit. Programs develop a person-centered care plan for each registrant to ensure preferences, interests and needs are addressed. ADHC programs must provide or arrange transportation to and from the program. These programs are regulated by the NYSDOH. Funding sources include fee-for-service Medicaid, contracts with the Veterans Administration, Medicaid managed care plans, as well as out-of-pocket payments. Medicare Advantage may also reimburse for visits to ADHC.

4. Hospice and Palliative Care

Hospice is an agency licensed by the NYSDOH to provide medical, spiritual, and emotional care to individuals with life-limiting illnesses with a prognosis of six months or less to live (12 months for individuals on Medicaid) if the disease process proceeds on its expected course. Many hospices have added “palliative care” to extend services to more people who could benefit from receiving health care and symptom management to prevent or reduce pain and suffering earlier in their illness or disease process. Hospice and palliative care can be provided in the home, a special

hospice facility, hospital, nursing home, ACF, or assisted living setting. Hospice also provides supportive services to the individual's family. Hospice care is predominantly covered by Medicare, Medicaid, private pay, and may be covered by some insurers.

5. Respite

Respite service provides infrequent and temporary overnight care for ill or disabled older adults for a few days or weeks. It gives caregivers (family members or friends) a temporary break from the stresses and responsibilities of providing constant care, enabling the caregiver to maintain a normal routine. Respite can be delivered in a variety of settings, including ACF and assisted living, nursing homes, adult day services programs, and a home in the community.

Respite services provided in the home are generally in short supply and should be reserved as early as possible. Generally speaking, respite services are overseen by the NYSDOH.

6. Home-Delivered Meals

Home-delivered meals, often called "meals-on-wheels," are provided to older adults who are unable to prepare their own well-balanced meals either on a temporary or long-term basis. Often, these individuals are recovering from a recent illness, surgery, or other condition that impairs their independence, creating a situation in which they become nutritionally at-risk at a time when proper nutrition is especially important. In New York State, Area Agencies on Aging provide home-delivered meals with funding from federal and state governments, local funds, and participant contributions. Some MLTC plans also arrange for, and cover the costs of, home-delivered meals.

7. Senior Centers

Senior centers offer a broad spectrum of services and activities such as social and educational services, health, nutrition, and a community resource for information and recreational activities. These centers are offered by various community groups, churches, and local governments. Some senior centers are regulated by NYSOFA and the New York State Office of Children and Family Services (OCFS). These centers must provide information and referral to other needed services, group activities, counseling, and outreach. Participants must be at least 60 years of age and be income-qualified.

8. Naturally Occurring Retirement Communities and Villages

Naturally Occurring Retirement Communities (NORCs) are buildings in which many of the residents are older adults who have either aged in place or have migrated to these communities with the intention of remaining

there. Neighborhood NORCs are similar, but rather than specific to a building, typically in an urban area, there is a predominance of older adults living in a particular neighborhood. Both models support aging in place and improved health outcomes by offering preventive health and wellness activities, case management services, classes and educational activities, trips, and volunteer opportunities. NORC programs are public/private partnerships between the State, local offices for the aging, the housing entity, local community service providers, and NORC residents themselves.

Villages are grassroots, self-governing, self-supporting consolidators of services within apartment buildings, housing complexes, and neighborhoods that offer their members access to vetted, discounted providers and volunteers for any service they might want or need; healthy living options; and organized programs, seminars, trips, and other social activities to support connectedness and friendships.

Payment

The cost of in-home and community-based services varies depending on the type of program and amount of services needed. Medicare, Medicaid, long term care insurance, private insurance, veteran's programs, and state/local offices for the aging are potential payment sources for home and community-based services. Among the services identified in this section, Medicare covers home health care (which must include nursing care or therapies) only on a short-term basis following a hospital stay, as well as hospice care. Medicaid may cover several of these services, including home health, personal care, and ADHC, over longer periods of time, primarily through managed care plans. Medicare Advantage plans and private insurance policies have specific criteria for what services are covered, for how long, and under what circumstances. Check with your insurer for more information.

Most of the services above may be purchased using personal funds. Many localities offer programs through their offices for the aging for individuals with low incomes, including EISEP, CSE, SADC, home-delivered meals, senior centers, and NORC supportive service programs. Some of these services, such as home-delivered meals, SADC, or respite, may also be covered by Medicaid under certain circumstances. Local programs, religious groups, and private sector agencies may provide additional supportive services and help with the costs. For further information, check with NY Connects or your local department of social services or office for the aging.

Questions

When deciding on in-home and community-based services, consider asking the following questions:

- What are the credentials of staff providing the services? Sometimes, people hire people informally to help take care of some of their daily needs. Bear in mind that hiring through a licensed or certified agency provides important consumer protections such as training, criminal history record checks, and insurance.
- Is the community service provider accredited by a national organization or formally connected to an existing health care provider such as a nursing home, hospital, or retirement community?
- What sort of backup or additional support can family members or friends provide or arrange to make sure the person can remain in the community safely? Can the person manage safely if their hired caregiver is unable to come for a scheduled visit, for example?
- What specific services are provided, and at what cost? What services are covered by insurance, and for how long? Are there more appropriate and less costly alternatives available?
- What happens when services are discontinued? Does the provider help the individual to access other services, if warranted?

Medicaid and Medicare Managed Care

“Managed care” is a term used to describe a health insurance plan that coordinates the provision, quality, and cost of care for its enrolled members. In general, when you enroll in a managed care plan, you select a primary care practitioner, a doctor who will be responsible for coordinating your health care. In most cases, you are expected to select health care providers from the managed care plan’s network of professionals, continuing care providers, and hospitals. There are several different types of Medicaid, Medicare, and commercial managed care programs offered in New York State.

Managed care plans pay health care providers directly, so enrollees do not have to pay out-of-pocket for covered services or submit claim forms for care received from the plan’s network of providers. However, some managed care plans can require co-pays paid directly to the provider at the time of service.

A variety of plans provide coverage of long term care and post-acute care for individuals who are Medicare and/or Medicaid eligible in New York State:

- **Medicare Advantage plans** cover only Medicare benefits (including post-acute care), plus certain supplemental benefits, but most often do not cover long term care services. They include both standard plans and the “special needs plans” that serve residents of nursing homes, beneficiaries who require a nursing home level of care, beneficiaries with chronic diseases, and individuals who are eligible

for both Medicare and Medicaid. Medicare beneficiaries may elect to receive their benefits from Medicare Advantage plans, but are not required to do so.

- **Managed long term care plans** cover only Medicaid benefits – currently nursing home (first three months), home care, adult day health care, other long term care services, optometry, dental, and podiatry services. Medicaid beneficiaries who are also Medicare eligible and need over 120 days of Medicaid long term care services in the community are required by state law to choose an MLTC plan to receive their Medicaid services.
- **Mainstream Medicaid managed care plans** cover almost all Medicaid benefits, including long term care services, for Medicaid beneficiaries who are under age 65 or otherwise ineligible for Medicare. Most Medicaid beneficiaries who are not Medicare eligible are required to choose a mainstream Medicaid managed care plan to receive their Medicaid services.
- **Program of All-Inclusive Care for the Elderly (PACE) plans** integrate Medicare and Medicaid benefits under a single plan for individuals aged 55 or older who require a nursing home level of care. PACE programs directly provide medical, therapy, and social services primarily in the program's health center, supplemented by in-home and other services as needed. Individuals who are eligible for both Medicare and Medicaid may elect to receive their benefits from a PACE plan, but are not required to do so.
- **Medicaid Advantage Plus (MAP) plans** also cover both Medicare and Medicaid benefits, but they are structured differently than PACE plans. Individuals who are eligible for both Medicare and Medicaid may elect to receive their benefits from a MAP plan, but are not required to do so.

Managed care enrollees are generally assigned a care manager to help them access the care and services they need. Some managed care plans and all PACE programs use an interdisciplinary team that may include physicians, therapists, nurses, social workers, and home health aides to plan, provide, and coordinate all needed services. The enrollee and their family are engaged in the care planning process.

For each Medicaid and/or Medicare enrollee, the plans receive a fixed monthly premium that is used to provide a package of services tailored to an individual's needs, including services that traditional Medicaid and/or Medicare may not provide. Compared to traditional Medicaid and Medicare, services are typically more coordinated and more customized, while out-of-pocket expenses are usually lower.

PACE and MAP plans combine Medicaid and Medicare services, while MLTC and mainstream Medicaid managed care plans provide only Medicaid services and help to coordinate Medicare services (if applicable)

for the enrollee. Therefore, it is important to review and understand the scope of services that each type of plan offers. PACE participants must be at least 55 years old, while other plans enroll younger individuals.

Medicare Part D – Prescription Drug Coverage

Medicare prescription drug coverage, generally referred to as Medicare Part D (“Part D”), is an optional benefit. Anyone eligible for Medicare, regardless of income or health status, may enroll. Medicare eligible individuals must make a choice to enroll in Part D by selecting a Part D-approved prescription drug plan (PDP) offered in New York.

Some special circumstances to consider include:

- Enrollment in the Part D program is automatic and mandatory for Medicaid beneficiaries who are also Medicare eligible;
- Medicare eligible individuals enrolled in the New York State Elderly Pharmaceutical Insurance Coverage (EPIC) program are required to enroll in Part D, which will then be the primary insurer, with EPIC providing secondary coverage;
- Individuals enrolled in Medicare Advantage or Health Maintenance Organization (HMO) managed care plans will likely be required to participate in the Part D plan (or “PDP”) offered by their managed care plan; and
- Individuals who already have prescription drug coverage from their employer/union should confer with their benefit plan manager about enrolling in Part D and its potential impact on their private insurance coverage.

Individuals deciding to enroll in Part D will need to carefully decide among a wide variety of PDPs offering varying levels of benefits, cost-sharing (premiums, deductibles, and co-payments), and formularies (that determine which drugs are covered). There are also additional benefits available through the Low-Income Subsidy (also called “Extra Help”), which provides low-income older adults with help to meet cost-sharing requirements.

Individuals are generally eligible to enroll in Part D when they first become Medicare eligible or during the annual open enrollment period, which usually occurs between mid-October and December of each year. Individuals may incur a premium penalty if they fail to enroll when they first become Medicare eligible. Other special enrollment periods may also apply.

For more details on enrolling in Part D, individuals should refer to the Centers for Medicare and Medicaid Services (CMS) at www.medicare.gov. More details on the Low-Income Subsidy (“Extra Help”) are available from the Social Security Administration (SSA) <https://www.ssa.gov/medicare/part-d-extra-help>. Details on EPIC and Part D are available from NYSOFA at <https://aging.ny.gov/programs/medicare-and-health-insurance>. The Part D enrollment

process can be complicated. Older adults and those assisting them in the process should carefully research all of the options. An additional resource that can provide free counseling and assistance to older adults regarding Part D is the Medicare Rights Center at www.medicarerights.org.

Steps to Ensure that Your Medical Treatment Preferences are Honored

Few New Yorkers realize that if they become unable to make their own health care decisions, family members or loved ones have limited authority to step in and speak on their behalf unless they have signed a health care proxy. When a person enters a hospital, generally they are asked to complete a health care proxy. However, if there is no hospital stay involved, an individual can access the form and instructions on the NYSDOH website at https://www.health.ny.gov/professionals/patients/health_care_proxy/ or from an attorney. Make sure the person you appoint understands your wishes regarding extended health care measures that should be used on your behalf. Those measures may include the use of ventilators, artificial nutrition, hydration, or cardiopulmonary resuscitation.

While the health care proxy provides a vehicle for individuals to appoint someone to make medical decisions for them, New York also authorizes two different ways for individuals who are seriously ill or have a limited life expectancy to ensure their preferences regarding life-sustaining treatment are honored. The first is a “do not resuscitate” (DNR) order. This means you do not want any medical personnel to attempt to restart your heart using artificial breathing, forceful pressure on the chest, or electric shock (defibrillation) if a medical emergency occurs. DNR forms are posted on the NYSDOH website at <https://www.health.ny.gov/forms/#D>. In addition, New York State authorizes the use of Medical Orders for Life-Sustaining Treatment (MOLST), https://www.health.ny.gov/professionals/patients/patient_rights/molst, which may include DNR orders and orders related to other life-sustaining treatments. MOLST is an alternative way for patients to document their end-of-life care preferences and ensure those preferences are made known to health care providers across the health care delivery system.

How to Take Charge of Selecting Care and Service Options

New York has an array of options, but it is important to determine which services and supports will be suitable. If a person is in a hospital, the hospital's social services department or a discharge planner will recommend appropriate services or a level of care at discharge, if needed. If you are in a nursing home, a Patient Review Instrument (PRI) will be completed. The PRI is discussed in more detail in the “Nursing Homes” section of this guide.

Speak with your medical professional and be honest about how much help is needed with activities of daily living and any injuries or health conditions. Using these activities as a guide, the medical professional will be able to recommend a level of care. Aging services organizations specializing in care navigation may also be able to assist with evaluating long term care options and provide help in selecting care.

New York's not-for-profit continuing care providers have one objective: to provide the highest quality and most compassionate care to the people they serve. At a time when continuing care is under intense scrutiny, not-for-profit organizations are consistently providing more hands-on care and developing new, more creative ways to meet the needs of older adults and people with disabilities.

LeadingAge New York members emphasize that nothing substitutes for a personal visit to a residence or program you are considering. During such visits, you can observe factors that may influence your choice. For example, you will be able to view on a first-hand basis the interaction between the staff and the individuals receiving services and familiarize yourself with the amenities and routines.

We encourage you to take notes during or immediately following your visit and review them prior to narrowing down your choices. Ask to meet the administrator, manager, program director, director of nursing, director of social work, director of physical therapy, director of dietary services, and anyone else you think might make a difference in your life. Under each section of care defined earlier in this guide, we have provided a helpful checklist of factors to consider when making your choice.

Keep It Personal

Personal preferences are critical when selecting a post-acute, long term care, or senior services provider. Make sure the types of services, activities, and environment are suitable to your needs. Discuss your hobbies and interests, and ask if there will be activities or events available that tie in well with what you like to do.

Look Around

Look at the people receiving services. Are they well-groomed and occupied with different activities? If the service offers meals, observe a mealtime to see how the food is presented. Unless you are on a restricted diet, ask to taste some of the food. Look at the living or program space. Are the common areas clean, comfortable, and attractively decorated? Does the staff seem friendly and interested in the services being provided?

Ask Questions

Don't think that your concern is "silly" or "minor." It's better to clarify any questions you have before making a major life decision such as this. Now

is not the time to be timid about asking questions! If you are looking at a nursing home, adult home, enriched housing program, or assisted living facility, ask to see the most recent inspection report or survey. These should be readily available. Ask questions about any “deficiencies” that may have been cited by the inspecting team. You have a right to know the results of those inspections.

LeadingAge New York and its members wish you success in finding the perfect provider to meet your needs. For updates to this guide and other information you may find helpful, visit the “Consumer Information” section of our website at www.leadingageny.org/publications/consumer-guide/

“I was absolutely dreading the ‘nursing home conversation’ with Mom. So I decided not to have it.”

To learn more, visit CHSBuffalo.org/LIFE
or call (716) 819-5433



Catholic Health
LIFE | Living Independently
For Elders

Medical Care | Transportation | Day Centers | Social Activities | At-Home Care

LIFE (Living Independently for Elders) is a Program of All-Inclusive Care for Elders (PACE).

FACILITIES

FACILITIES

ALBANY**Beverwyck, Inc.**

40 Autumn Drive
Slingerlands, NY 12159-9356
Tel: 518-482-8774 / Fax: 518-482-0106
Corporate Website: www.sphp.com
Facility Website:
www.eddyseniorliving.com/beverwyck

Sponsor: The Eddy/St. Peter's Health Partners

Programs Offered:

Nursing Facility Beds: 24
Enriched Housing Beds: 41
Market Rate Housing Units: 199

Bishop Broderick Apartments

50 Prescott Street
Albany, NY 12205
Tel: 518-869-7441 / Fax: 518-869-0443
Facility Website: www.depaulhousing.com
Sponsor: Roman Catholic Diocese of Albany

Programs Offered:

Subsidized Housing Units: 100

Cabrini Acres Senior Apartments

4 Carondelet Drive
Watervliet, NY 12189-2306
Tel: 518-785-0050 / Fax: 518-785-0110
Facility Website: www.depaulhousing.com
Sponsor: Roman Catholic Diocese of Albany

Programs Offered:

Subsidized Housing Units: 49

Carondelet Commons Senior Apartments

2 Carondelet Drive
Watervliet, NY 12189-2300
Tel: 518-783-0444 / Fax: 518-783-0456
Facility Website: www.depaulhousing.com
Sponsor: Roman Catholic Diocese of Albany

Programs Offered:

Subsidized Housing Units: 49

ALBANY**Daughters of Sarah Community for Seniors**

180 Washington Avenue Ext.
Albany, NY 12203-2322
Tel: 518-456-7831 / Fax: 518-456-7597
Facility Website: www.dossc.org

Programs Offered:

Nursing Facility Beds: 210
Long-Term Rehabilitation
Short-Term Rehabilitation
Memory Care/Alzheimer's Unit
Wound Care Management
IV Therapy
Respite
Palliative Care

Eddy Village Green at Cohoes

421 Columbia Street
Cohoes, NY 12047-2222
Tel: 518-237-5630 / Fax: 518-237-0904
Corporate Website: www.sphp.com
Facility Website: www.sphp.com/eddy-village-green-at-cohoes-cc
Sponsor: The Eddy/St. Peter's Health Partners

Programs Offered:

Nursing Facility Beds: 192
Green House Model Nursing Facility

Fontbonne Manor Senior Apartments

10 Carondelet Drive
Watervliet, NY 12189-2325
Tel: 518-782-2780 / Fax: 518-782-2778
Facility Website: www.depaulhousing.com
Sponsor: Roman Catholic Diocese of Albany

Programs Offered:

Subsidized Housing Units: 49

Marie Rose Manor

100 Marquis Drive
Slingerlands, NY 12159-9348
Tel: 518-459-0204 / Fax: 518-459-0527
Facility Website: www.depaulhousing.com
Sponsor: Roman Catholic Diocese of Albany

Programs Offered:

Subsidized Housing Units: 49

ALBANY

Marjorie Doyle Rockwell Center

421 Columbia Street
Cohoes, NY 12047-2217

Tel: 518-238-4150 / Fax: 518-238-4195

Corporate Website: www.sphp.com

Facility Website: www.eddyseniorliving.com/our-communities/memory-care-assistedliving/marjorie-doyle-rockwell-center

Sponsor: The Eddy/St. Peter's Health Partners

Programs Offered:

Adult Home Beds: 52

Special Needs Assisted Living Residence (SNALR) Beds: 52

Adult Day Health Care

Respite Care (Dementia Specific)

Our Lady of Mercy Life Center

2 Mercycare Lane
Guilderland, NY 12084-9701

Tel: 518-464-8100 / Fax: 518-464-8111

Corporate Website: www.sphp.com

Facility Website: www.sphp.com

Sponsor: The Eddy/St. Peter's Health Partners

Programs Offered:

Nursing Facility Beds: 160

Subacute Rehabilitation

Sanderson Court Senior Apartments

6 Carondelet Drive
Watervliet, NY 12189-2313

Tel: 518-782-1123 / Fax: 518-782-1125

Facility Website: www.depaulhousing.com

Sponsor: Roman Catholic Diocese of Albany

Programs Offered:

Subsidized Housing Units: 49

ALBANY

Shaker Place Rehabilitation and Nursing Center

100 Heritage Lane
Albany, NY 12211-1089

Tel: 518-869-2231 / Fax: 518-869-1713

Facility Website: www.shakerplace.org

Sponsor: Albany County

Programs Offered:

Nursing Facility Beds: 250

Palliative Care

IV Therapy/Antibiotics

Rehabilitation - Short and Long Term

Respiratory Therapy

Wound Care Management

Rehabilitation Gymnasium and Fitness Center

Nutrition Education and Management

Social and Psycho Social Management

Shaker Pointe at Carondelet

One Bell Tower Drive
Watervliet, NY 12189-2333

Tel: 518-250-4890 / Fax: 518-250-4486

Facility Website: www.shakerpointe.org

Sponsor: Sisters of St. Joseph of Carondelet

Programs Offered:

Market Rate Housing Units: 162

Independent Residences with Services

Somaltow Housing Company, Inc.

101 South Pearl Street
Albany, NY 12207-1439

Tel: 518-463-0294 / Fax: 518-463-1276

Facility Website: <http://southmalltowers.org>

Managed Properties:

South Mall Towers - 101 Bldg.

South Mall Towers - 99 Bldg.

ALBANY**St. Margaret's Center**

27 Hackett Boulevard
Albany, NY 12208-3420

Tel: 518-591-3300 / Fax: 518-591-3320

Facility Website: www.cfdnsny.org/st-margarets-center.org

Sponsor: Not-for-Profit

Programs Offered:

Nursing Facility Beds: 94

Including: Pediatric and Young Adult

Skilled Nursing: 56 Beds

Pediatric Ventilator: 36 Beds

Pediatric Respite: 2 Beds

St. Peter's Nursing and Rehabilitation Center

301 Hackett Boulevard
Albany, NY 12208-1963

Tel: 518-525-7600 / Fax: 518-525-7673

Corporate Website: www.sphp.com

Facility Website: www.sphcs.org

Sponsor: The Eddy/St. Peter's Health Partners

Programs Offered:

Nursing Facility Beds: 160

Including a 40-bed Subacute Unit

St. Vincent's Apartments

475 Yates Street
Albany, NY 12208-3372

Tel: 518-482-8915 / Fax: 518-489-1220

Facility Website: www.depaulhousing.com

Sponsor: Roman Catholic Diocese of Albany

Programs Offered:

Subsidized Housing Units: 59

Teresian House Center for the Elderly

200 Washington Avenue Ext.
Albany, NY 12203-5335

Tel: 518-456-2000 / Fax: 518-456-1142

Facility Website: www.teresianhouse.org

Sponsor: Roman Catholic Diocese of Albany, Service by Carmelite Sisters for the Aged and Infirm

Programs Offered:

Nursing Facility Beds: 300

Respite Care - 2 Beds

Rehabilitation

BENNINGTON**Vermont Veteran's Home**

325 North Street
Bennington, VT 05201

Tel: 802-447-6510 / Fax: 802-447-6466

Facility Website: <http://vvh.vermont.gov>

Programs Offered:

Nursing Facility Beds: 130

Residential Care: 8 Beds

BRONX**6469 Broadway Selfhelp**

6469 Broadway
Bronx, NY 10471-2749

Tel: 212-971-7715 / Fax: 212-967-4784

Corporate Website: www.selfhelp.net

Sponsor: Selfhelp Community Services, Inc.

Programs Offered:

Subsidized Housing Units: 86

ArchCare at Providence Rest

3304 Waterbury Avenue
Bronx, NY 10465-1554

Tel: 718-931-3000 / Fax: 718-514-8447

Facility Website: www.archcare.org/providence-rest

Sponsor: Sisters of St. John the Baptist

Programs Offered:

Nursing Facility Beds: 200

Including Two Respite Beds

Short term & Long-Term Care

Outpatient Rehabilitation

ArchCare at San Vicente de Paul Skilled Nursing and Rehabilitation Center

900 Intervale Avenue
Bronx, NY 10459-4203

Tel: 917-645-9200 / Fax: 718-589-7010

Corporate Website: www.archcare.org

Facility Website:

www.archcare.org/san-vicente-de-paul

Sponsor: Archdiocese of New York

Programs Offered:

Nursing Facility Beds: 120

Assisted Living Program (ALP) Beds: 59

ArchCare at Senior Life (PACE)

BRONX**CASA PROMESA**

308 East 175 Street
Bronx, NY 10457

Tel: 718-960-7600 / Fax: 718-901-1118

Corporate Website: www.acacianetwork.org

Programs Offered:

Nursing Facility Beds: 108

**ElderServe Health, Inc.
dba RiverSpring Health Plans**

80 West 225th Street
Bronx, NY 10463

Tel: 800-370-3600

Corporate Website: www.riverspringliving.org

Facility Website:

www.riverspringliving.org/managed-care

Programs Offered:

Managed Long Term Care

Institutional Special Needs Plan

Medicare and Medicaid Advantage Plus

**Hebrew Home/
1880 Boston Road Apartments**

1880 Boston Road
Bronx, NY 10460

Tel: 718-581-1880 / Fax: 718-581-1881

Corporate Website: www.riverspringliving.org

Facility Website:

www.riverspringliving.org/1880-boston-road

Programs Offered:

Subsidized Housing Units: 51

BRONX**Hebrew Home at Riverdale -
RiverSpring Living**

5901 Palisade Avenue
Bronx, NY 10471-1205

Tel: 718-581-1000 / Fax: 718-543-3681

Facility Website:

www.riverspringliving.org/hebrew-home

Programs Offered:

Nursing Facility Beds: 600

Assisted Living Program (ALP) Beds: 35

RiverSpring Residences:

Private Pay Assisted Living and

Memory Care: 69 Beds

Licensed Home Care Services Agency (LHCSA)

Certified Home Health Agency (CHHA)

Weinberg Elder Abuse Shelter

Respite

Post Acute

Medicaid ALP

Jeanne Jugan Residence

Little Sisters of the Poor, 2999 Schurz Avenue
Bronx, NY 10465-3826

Tel: 347-329-1800 / Fax: 347-329-1812

Facility Website: www.littlesistersofthepoorbronx.org

Sponsor: Little Sisters of the Poor

Programs Offered:

Subsidized Housing Units: 47

Low Income Senior Apartments

DayShare

BRONX**Methodist Home for Nursing & Rehabilitation**

4499 Manhattan College Parkway
Riverdale, NY 10471-3919

Tel: 718-548-5100 / Fax: 718-548-3147

Facility Website: www.methodisthome.org

Sponsor: Methodist

Programs Offered:

Nursing Facility Beds: 120

Short Stay (Respite): 1 bed

Stroke Program

All Private Rooms

State of the Art Rehab Gym

Short Term Rehabilitation

Long Term Care

Palliative/Comfort Care

On-site Chapel - Non-denomination

On-site Beautician/Barber

Hospice Services - Calvary Hospice

The New Jewish Home, University Avenue Assisted Living

2553 University Avenue
Bronx, NY 10468

Tel: 347-418-4263

Corporate Website: www.jewishhome.org

Facility Website: <https://jewishhome.org/housing/university-ave-assistedliving-program>

Programs Offered:

Assisted Living Program (ALP) Beds: 72

Rebekah Rehab and Extended Care Center

1070 Havemeyer Avenue
Bronx, NY 10462-5310

Tel: 718-863-6200 / Fax: 914-530-2178

Facility Website: www.rebekahrehab.org

Sponsor: Odd Fellows & Rebekahs

Programs Offered:

Nursing Facility Beds: 213

Assisted Living Program (ALP) Beds: 56

Subsidized Housing Units: 72

Certified Home Health Agency (CHHA)

Short Term - Subacute Unit

Respite Beds

BRONX**River's Edge**

5901 Palisade Avenue
Bronx, NY 10471

Tel: 718-581-1900

Corporate Website: RiverSpringLiving.org

For more information about River's Edge:
RiversEdge.org

Programs Offered:

CCRC: Life Plan Community - Under Construction

RiverWalk

5961 Palisade Avenue
Riverdale, NY 10471-1253

Tel: 718-581-1298 / Fax: 718-581-1003

Corporate Website: www.riverspringliving.org

Facility Website: www.riverspringliving.org/independent-living

Sponsor: The Hebrew Home at Riverdale

Programs Offered:

Market Rate Housing Units: 137

Private Pay

BROOME**Good Shepherd Village at Endwell**

32 Village Drive
Endwell, NY 13760

Tel: 607-757-3100 / Fax: 607-757-3101

Facility Website:

www.goodshepherdcommunities.org

Programs Offered:

CCRC Including:

Market Rate Housing Units: 154

Nursing Facility Beds: 32

Enhanced Assisted Living Residence

(EALR) Beds: 16

Special Needs Assisted Living Residence

(SNALR) Beds: 16

BROOME

Good Shepherd-Fairview Home, Inc.

80 Fairview Avenue
 Binghamton, NY 13904-1195
 Tel: 607-724-2477 / Fax: 607-724-2820
 Facility Website:
www.goodshepherdcommunities.org

Programs Offered:

Nursing Facility Beds: 54
Including 2 Community Respite
Market Rate Housing Units: 40
Enhanced Assisted Living Residence
(EALR) Beds: 35

Metro Interfaith Housing Management Corporation

21 New Street
 Binghamton, NY 13903-1759
 Tel: 607-772-6766 / Fax: 607-722-8912
 Facility Website: www.metrointerfaith.org

Programs Offered:

Enriched Housing Program Beds: 48
Subsidized Housing Units: 195

Saint Louise Manor

861 Front Street
 Binghamton, NY 13905-1540
 Tel: 607-724-4000 / Fax: 607-724-8300
 Facility Website: www.unitedmethodisthomes.org

Sponsor: United Methodist Homes

Programs Offered:

Market Rate Housing Units: 22
Adult Home Beds: 28
Assisted Living Program (ALP) Beds: 24

UHS Senior Living at Ideal

600 High Avenue
 Endicott, NY 13760-4719
 Tel: 607-786-7300 / Fax: 607-786-7490
 Facility Website: www.nyuhs.org/locations/senior-living-at-ideal

Programs Offered:

Nursing Facility Beds: 150
Adult Home Beds: 35
Assisted Living Program (ALP) Beds: 35
Subsidized Housing Units: 33
Licensed Home Care Services Agency (LHCSA)

BROOME

United Methodist Homes Elizabeth Church Campus

863 Front Street
 Binghamton, NY 13905-1597
 Tel: 607-722-3463 / Fax: 607-722-7806
 Facility Website: www.unitedmethodisthomes.org
 Sponsor: United Methodist Homes

Programs Offered:

Nursing Facility Beds: 120
Market Rate Housing Units: 8

United Methodist Homes Hilltop Campus

286 Deyo Hill Road
 Johnson City, NY 13790-5135
 Tel: 607-798-7818 / Fax: 607-798-9382
 Facility Website: www.unitedmethodisthomes.org
 Sponsor: United Methodist Homes

Programs Offered:

Market Rate Housing Units: 180
Adult Home Beds: 72
Assisted Living Program (ALP) Beds: 26
Assisted Living Resident (ALR) Beds: 72
Enhanced Assisted Living Residence
(EALR) Beds: 36
Special Needs Assisted Living Residence
(SNALR) Beds: 36

Willow Point Rehabilitation & Nursing Center

3700 Old Vestal Road
 Vestal, NY 13850-2289
 Tel: 607-763-4400 / Fax: 607-763-4442
 Facility Website: www.gobroomecounty.com/wpnf
 Sponsor: Broome County

Programs Offered:

Nursing Facility Beds: 300
Alzheimer's Unit
Rehabilitation

CATTARAUGUS**The Pines Healthcare and Rehabilitation Center-Olean Campus**

2245 West State Street

Olean, NY 14760-1921

Tel: 716-373-1910 / Fax: 716-373-1805

Facility Website: <https://pinescare.com/olean-campus>

Sponsor: Cattaraugus County

Programs Offered:*Nursing Facility Beds: 120**Short-Term Rehabilitation Program***The Pines Healthcare and Rehabilitation Centers-Machias Campus**

9822 Route 16

Machias, NY 14101-0310

Tel: 716-353-8516 / Fax: 716-353-4316

Facility Website: www.catto.org

Sponsor: Cattaraugus County

Programs Offered:*Nursing Facility Beds: 115**Alzheimer's/Dementia Care**Short-Term Rehabilitation Unit***CAYUGA****The Commons on St. Anthony**

3 St. Anthony Street

Auburn, NY 13021-4500

Tel: 315-253-0351 / Fax: 315-258-3904

Corporate Website: www.loretto-cny.orgFacility Website: www.loretto-cny.org/ourcare-and-communities/our-communities/skilled-nursing-and-rehabilitation

Sponsor: Auburn Senior Services, Inc.

Programs Offered:*Nursing Facility Beds: 300**Adult Day Health Care**Short-Term Rehabilitation***The Edward T. Boyle Center**

149 Genesee Street

Auburn, NY 13021

Tel: 315-253-0335 / Fax: 315-258-9613

Facility Website: www.christopher-community.org**Programs Offered:***Subsidized Housing Units: 150***Finger Lakes Center for Living**

20 Park Avenue

Auburn, NY 13021-1983

Tel: 315-255-7188 / Fax: 315-255-7109

Facility Website: www.auburnhospital.org/programs-services/fingerlakes-center-for-living.php

Sponsor: Auburn Community Hospital

Programs Offered:*Nursing Facility Beds: 80*

CHAUTAUQUA

Bergquist Memorial Assisted Living Residence

4600 Route 60 - PO Box 350
Gerry, NY 14740

Tel: 716-484-4180 / Fax: 716-338-0159

Facility Website: www.heritage1886.org

Sponsor: Heritage Ministries

Programs Offered:

Adult Home Beds: 32

Assisted Living Residence (ALR) Beds: 32

Edgewood Communities

737 Falconer Street
Jamestown, NY 14701-1935

Tel: 716-665-8197 / Fax: 716-665-3853

Corporate Website: www.lutheran-jamestown.org

Facility Website: [www.lutheran-jamestown.org/
edgewood-communities](http://www.lutheran-jamestown.org/edgewood-communities)

Programs Offered:

Market Rate Housing Units: 140

Norman C. Berg Smartment Building

Heritage Green Rehab & Skilled Nursing

PO Box 400, 3023 Route 430
Greenhurst, NY 14742-0400

Tel: 716-483-5000 / Fax: 716-488-2414

Facility Website: www.heritage1886.org

Sponsor: Heritage Ministries Church of
North America

Programs Offered:

Nursing Facility Beds: 134

Rehabilitation

Memory Care

Heritage Park Rehab & Skilled Nursing

150 Prather Avenue
Jamestown, NY 14701-6796

Tel: 716-488-1921 / Fax: 716-484-9370

Facility Website: www.heritage1886.org

Sponsor: Heritage Ministries

Programs Offered:

Nursing Facility Beds: 146

Rehabilitation

Memory Care

CHAUTAUQUA

Heritage Village Rehab & Skilled Nursing, Inc.

PO Box 351, 4570 Route 60
Gerry, NY 14740-0351

Tel: 716-985-4612 / Fax: 716-985-4197

Facility Website: www.heritage1886.org

Sponsor: Heritage Ministries

Programs Offered:

Nursing Facility Beds: 120

Alzheimer's/Dementia Secure Beds

Rehabilitation

Memory Care

Hultquist Place

715 Falconer Street
Jamestown, NY 14701-1997

Tel: 716-720-9610 / Fax: 716-720-9609

Corporate Website: www.lutheran-jamestown.org

Facility Website: [www.lutheran-jamestown.org/
assisted-living](http://www.lutheran-jamestown.org/assisted-living)

Programs Offered:

Adult Home Beds: 96

Assisted Living Program (ALP) Beds: 96

Orchard Grove Residences

2000 Southwestern Drive WE
Jamestown, NY 14701

Tel: 716-338-1600 / Fax: 716-985-6690

Facility Website: www.heritage1886.org

Programs Offered:

Adult Home Beds: 36

Assisted Living Program (ALP) Beds: 30

St. Columbans on the Lake

2546 Lake Road
Silver Creek, NY 14136-9726

Tel: 716-934-4515 / Fax: 716-934-3919

Facility Website: www.stcolumbanshome.org

Sponsor: Columban Sisters

Programs Offered:

Adult Home Beds: 50

CHEMUNG**Bethany Nursing Home and Health Related Facilities**

3005 Watkins Road

Horseheads, NY 14845-1855

Tel: 607-378-6547 / Fax: 607-796-2821

Facility Website: www.bethany-village.org

Sponsor: Not-for-Profit Corporation

Programs Offered:*Nursing Facility Beds: 120**Memory Impaired Care**Care Management**Nursing Services**Short & Long Term Rehabilitation**IV Services**Wound Care**Respite Care***Chemung County Nursing Facility**

103 Washington Street, PO Box 588

Elmira, NY 14901

Tel: 607-737-2001 / Fax: 607-737-2807

Facility Website: www.chemungcounty.com

Sponsor: Chemung County

Programs Offered:*Nursing Facility Beds: 200***St. Joseph's Hospital-SNF**

555 St. Joseph's Boulevard

Elmira, NY 14901

Tel: 607-733-6541 / Fax: 607-271-3404

Facility Website: www.arnothealth.org**Programs Offered:***Nursing Facility Beds: 85**Transition Care: 26 Beds***CHENANGO****Chase Memorial Nursing and Rehabilitation Center**

One Terrace Heights / PO Box 250

New Berlin, NY 13411-9515

Tel: 607-847-7000 / Fax: 607-847-6132

Facility Website:

www.goodshepherdcommunities.org

Sponsor: Good Shepherd Communities

Programs Offered:*Nursing Facility Beds: 80**32 HUD Apartments***Grace View Manor** 

80 Calvary Drive

Norwich, NY 13815-1030

Tel: 607-337-1014 / Fax: 607-336-1909

Facility Website:

www.nationalchurchresidences.org

Sponsor: National Church Residences

Programs Offered:*Subsidized Housing Units: 40***New York State Veterans Home at Oxford**

4207 State Highway 220

Oxford, NY 13830-4323

Tel: 607-843-3101 / Fax: 607-843-3199

Facility Website: www.nysvets.org**Programs Offered:***Nursing Facility Beds: 242*

CLINTON

Clinton County Nursing Home

16 Flynn Avenue
 Plattsburgh, NY 12901-3707
 Tel: 518-563-0950 / Fax: 518-563-1060
 Facility Website: www.clintoncountygov.com/Departments/NursingHome/NursingHomeHomePage.html
 Sponsor: Clinton County
Programs Offered:
Nursing Facility Beds: 80

CVPH Medical Center SNF

75 Beekman Street
 Plattsburgh, NY 12901-1427
 Tel: 518-562-7760 / Fax: 518-562-7324
 Facility Website: www.cvph.org
 Sponsor: The University of Vermont Health Network

Programs Offered:
Nursing Facility Beds: 34
Skilled Nursing Services
Rehabilitation Services

Keeseville Country Gardens

164 Hill Street
 Keeseville, NY 12944-4134
 Tel: 518-834-7725 / Fax: 518-834-1500
 Facility Website: www.nationalchurchresidences.org
 Sponsor: National Church Residences
Programs Offered:
Subsidized Housing Units: 50
 0837@nationalchurchresidences.org

COLUMBIA

Camphill Ghent, Inc.

2542 Route 66
 Chatham, NY 12037
 Tel: 518-392-2760 / Fax: 518-514-1158
 Facility Website: www.camphillghent.org
Programs Offered:
Adult Home Beds: 13
Assisted Living Program (ALP) Beds: 18

The FASNY Firefighter's Home

125 Harry Howard Avenue
 Hudson, NY 12534-1601
 Tel: 518-828-7695 / Fax: 518-828-1092
 Facility Website: www.firemenshome.com
 Sponsor: FASNY
Programs Offered:
Nursing Facility Beds: 92

Greenport Manor

200 Town Hall Drive
 Hudson, NY 12534-1225
 Tel: 518-828-6488 / Fax: 518-828-9488
 Facility Website: www.nationalchurchresidences.org
 Sponsor: National Church Residences
Programs Offered:
Subsidized Housing Units: 39

DELAWARE**Delhi Senior Community**

7 Main Street

Delhi, NY 13753-1151

Tel: 607-746-8142 / Fax: 607-746-6546

Facility Website: www.depaulhousing.com

Sponsor: Roman Catholic Diocese of Albany

Programs Offered:*Subsidized Housing Units: 45***Mountainside Residential Care Center**

42158 State Highway 28

Margaretville, NY 12455-4700

Tel: 845-586-1800 / Fax: 845-586-1933

Facility Website: www.hahv.org**Programs Offered:***Nursing Facility Beds: 82**Rehabilitation, Occupational & Physical Therapy
Activity Programs**Medication Management**Wound Care**Continence Management**24-Hour Visitation**Pet Therapy**Spiritual Services**Free Wifi**Gardening**Full-Service Beauty/Barber Shop**Personal Laundry**Hospice Services***Sidney Senior Village** 

200 Fox Street

Sidney, NY 13838-1565

Tel: 607-563-8000 / Fax: 607-563-9890

Facility Website:

www.nationalchurchresidences.org

Sponsor: National Church Residences

Programs Offered:*Subsidized Housing Units: 40**Including 4 mobility accessible units**Service Coordinator***DUTCHESS****ArchCare at Ferncliff Nursing Home**

21 Ferncliff Drive

Rhinebeck, NY 12572-1900

Tel: 845-876-2011 / Fax: 845-876-4923

Corporate Website: www.archcare.orgFacility Website: www.archcare.org/ferncliff

Sponsor: Archdiocese of New York

Programs Offered:*Nursing Facility Beds: 309***Lutheran Care Center**

965 Dutchess Turnpike

Poughkeepsie, NY 12603

Tel: 845-486-9494 / Fax: 845-486-7592

Facility Website:

<https://www.lutherancarecenter.org>

Sponsor: The Lutheran Care Network

Programs Offered:*Nursing Facility Beds: 160***Meadows at Brookmeade
(Formerly The Baptist Home)**

46 Brookmeade Drive

Rhinebeck, NY 12572-2322

Tel: 845-876-2071 / Fax: 845-876-2197

Facility Website:

www.brookmeadecommunity.org

Sponsor: Baptist

Programs Offered:*Nursing Facility Beds: 120***St. Simeon II H.D.F.C., Inc.**

9 Hilltop Court

Poughkeepsie, NY 12601

Tel: 845-471-9651

Facility Website:

<http://maplegroverestoration.org/simeon.htm>**Programs Offered:***Subsidized Housing Units: 60***St. Simeon Second Mile Corp.**

700 Second Mile Drive

Poughkeepsie, NY 12601

Tel: 845-471-5766 / Fax: 845-471-6108

Corporate Website:

<http://maplegroverestoration.org/simeon.htm>

Sponsor: St. Simeon Foundation

Programs Offered:*Market Rate Housing Units: 80**Subsidized Housing Units: 20*

ERIE**Asbury Pointe**

50 Stahl Road

Getzville, NY 14068-1550

Tel: 716-810-7500 / Fax: 716-636-6209

Corporate Website: www.beechwoodcare.org

Facility Website:

www.beechwoodcare.org/asbury.html

Sponsor: Beechwood Continuing Care

Programs Offered:*Market Rate Housing Units: 110***Baptist Manor**

276 Linwood Avenue

Buffalo, NY 14209-1838

Tel: 716-881-1120 / Fax: 716-270-1113

Facility Website: www.baptist-manor.org**Programs Offered:***Subsidized Housing Units: 126**Housing: 126 apartments for Seniors**62 years and older**96 are Subsidized***Beechwood Homes**

2235 Millersport Highway

Getzville, NY 14068

Tel: 716-810-7000 / Fax: 716-688-4209

Corporate Website: www.beechwoodcare.org

Facility Website:

www.beechwoodcare.org/bw_homes_a.html

Sponsor: Beechwood Continuing Care/

Not-for-Profit Corporation

Programs Offered:*Nursing Facility Beds: 220***Bristol Village**

8455 Clarence Center Road

Clarence Center, NY 14032-9315

Tel: 716-406-9500 / Fax: 716-406-9501

Facility Website: www.bristolhome.org**Programs Offered:***Enriched Housing Beds: 110**Enhanced Assisted Living (ALR) Beds: 20**Special Needs Assisted Living**(SNALR) Beds: 36**Assisted Living Residence (ALR) Beds: 110***ERIE****Brothers of Mercy Sacred - Heart Home Assisted Living & Memory Care**

4526 Ransom Road

Clarence, NY 14031-2199

Tel: 716-759-2644

Corporate Website: www.brothersofmercy.orgFacility Website: <https://brothersofmercy.org/Memory-care-enhanced-assistive-living>

Sponsor: Brothers of Mercy Wellness Campus

Sponsor: Brothers of Mercy Wellness Campus

Programs Offered:*Adult Home Beds: 96**Assisted Living Residence (ALR) Beds: 64**Enhanced Assisted Living Residence**(EALR) Beds: 64**Special Needs Assisted Living Residence**(SNALR) Beds: 32*

mindee@brothersofmercy.org

Brothers of Mercy Nursing and Rehabilitation Center

10570 Bergtold Road

Clarence, NY 14031-2105

Tel: 716-759-6985 / Fax: 716-759-6223

Facility Website: www.brothersofmercy.org

Sponsor: Brothers of Mercy Wellness Campus

Programs Offered:*Nursing Facility Beds: 240**Palliative Care**Sub-Acute Care**Rehabilitation**Hospice***Canterbury Woods**

705 Renaissance Drive

Williamsville, NY 14221-8080

Tel: 716-929-5800 / Fax: 716-929-5812

Facility Website: www.canterburywoods.org

Sponsor: Episcopal Church Home and Affiliates, Inc.

Programs Offered:*CCRC including:**Nursing Facility Beds: 50**Enhanced Assisted Living Residence**(EALR) Beds: 38**Special Needs Assisted Living Residence**(SNALR) Beds: 12**Market Rate Housing Units: 296**Short-Term Rehabilitation Services**Outpatient Rehabilitation Services*

ERIE**Father Baker Manor**

6400 Powers Road
Orchard Park, NY 14127-4841
Tel: 716-667-0001 / Fax: 716-667-0028
Corporate Website: www.chsbuffalo.org
Facility Website: www.chsbuffalo.org/Facilities/Rehab/SubacuteFacilities/FBM
Sponsor: Catholic Health

Programs Offered:

Nursing Facility Beds: 160
Long Term Care
End of Life Care
Sub-Acute Rehab
Short-Term Rehabilitation

Felician Sisters of North America - Immaculate Heart of Mary Convent

600 Doat Street
Buffalo, NY 14211
Tel: 716-892-4141
Corporate Website: www.felician.org
Sponsor: Felician Sisters of North America

Programs Offered:

Subsidized Housing

Fox Run at Orchard Park

One Fox Run Lane
Orchard Park, NY 14127
Tel: 716-662-5001 / Fax: 716-662-6985
Facility Website: www.foxrunorchardpark.com
Sponsor: United Church Home Society, Inc.

Programs Offered:

CCRC including:
Nursing Facility Beds: 60
Assisted Living Residence (ALR) Beds: 34
Special Needs Assisted Living Residence (SNALR) Beds: 18
Independent Living Apartments & Patio Homes: 180

GreenField Court

5951 Broadway
Lancaster, NY 14086-9597
Tel: 716-684-8400 / Fax: 716-684-8480
Facility Website: www.thegreenfields.org
Sponsor: Niagara Lutheran Health System

Programs Offered:

Enriched Housing Beds: 57

ERIE**GreenField Health and Rehabilitation Center**

5949 Broadway
Lancaster, NY 14086-9523
Tel: 716-684-3000 / Fax: 716-684-3380
Facility Website: www.thegreenfields.org
Sponsor: Evangelical Lutheran Church in America, Lutheran Church

Programs Offered:

Nursing Facility Beds: 160
Rehabilitation Services and Subacute Care: 57
Beds Respite Care: 2 Beds

GreenField Manor

5953 Broadway
Lancaster, NY 14086-9597
Tel: 716-684-8400 / Fax: 716-684-6946
Facility Website: www.thegreenfields.org
Sponsor: Niagara Lutheran Health System

Programs Offered:

Market Rate Housing Units: 92

GreenField Terrace

5979 Broadway
Lancaster, NY 14086
Tel: 716-684-8400 / Fax: 716-684-8480
Facility Website: www.thegreenfields.org
Sponsor: Niagara Lutheran Health System

Programs Offered:

Adult Home Beds: 56
Enhanced Assisted Living Residence (EALR) Beds: 23
Special Needs Assisted Living Residence (SNALR) Beds: 42

HighPointe on Michigan

1031 Michigan Avenue
Buffalo, NY 14203
Tel: 716-748-3100 / Fax: 716-748-3288
Facility Website: www.highpointeonmichigan.org
Sponsor: Kaleida Health

Programs Offered:

Nursing Facility Beds: 300
Pediatric Long-Term Beds: 20
Adult Ventilator Beds: 10
Subacute Beds: 30
Dementia Beds: 40
Long Term Skilled Nursing Beds: 200

ERIE

Ken-Ton Presbyterian Village

3735 Delaware Avenue
Kenmore, NY 14217-1033

Tel: 716-874-6070 / Fax: 716-874-1455

Corporate Website: www.pscwny.org

Facility Website: www.pscwny.org/ken-ton-village

Sponsor: Beechwood Continuing Care

Programs Offered:

Enriched Housing Beds: 45

Subsidized Housing Units: 105

Mercy Nursing Facility at OLV

55 Melroy Avenue
Lackawanna, NY 14218

Tel: 716-819-5300 / Fax: 716-819-5299

Corporate Website: www.chsbuffalo.org

Facility Website: www.chsbuffalo.org/olv

Sponsor: Catholic Health

Programs Offered:

Nursing Facility Beds: 84

PACE Program

People Inc.

1219 North Forest Road
Williamsville, NY 14221

Tel: 716-634-8132 / Fax: 716-634-8063

Facility Website: www.people-inc.org

Managed Properties:

Carnation Housing Corp.

Daffodil Senior Housing

Elm Housing Corp.

Holly Housing Corp.

Iris Housing Corporation

Ivy Rose Housing Corporation

Leisuretimers

Lilly Senior Housing

Maple Housing Corp.

Marigold Housing Corporation

Oak Housing Corp.

Pine Housing Corp.

Poinsettia Housing Corp.

Seneca - Cazenovia Community

Square Corporation

Sunflower Housing Corp.

Violet Housing Corporation

Willow Housing Corp.

ERIE

Presbyterian Village at North Church

214 Village Park Drive
Williamsville, NY 14221-5068

Tel: 716-631-3430 / Fax: 716-204-0403

Corporate Website: www.pscwny.org

Facility Website: www.pscwny.org/Village-at-north-church

Sponsor: Beechwood Continuing Care

Programs Offered:

Market Rate Housing Units: 78

Schofield Residence

3333 Elmwood Avenue
Kenmore, NY 14217-1081

Tel: 716-874-1566 / Fax: 716-874-6942

Facility Website: www.schofieldcare.org

Sponsor: Not-for-Profit

Programs Offered:

Nursing Facility Beds: 120

Certified Home Health Agency (CHHA)

Adult Day Health Care

Terrace View Long Term Care

462 Grider Street
Buffalo, NY 14215-3075

Tel: 716-551-7100 / Fax: 716-551-7193

Facility Website: www.ecmc.edu

Sponsor: County Medical Center Corporation

Programs Offered:

Nursing Facility Beds: 390

Neuro Behavioral Unit: 16 Beds

Ventilator Dependent: 20 Beds

Sub Acute Rehab: 44 Beds

Bariatric: 10 Beds

Memory Care: 96 Beds

United Church Manor

50 North Avenue
West Seneca, NY 14224-1364

Tel: 716-668-5804 / Fax: 716-668-0299

Corporate Website: www.seniorwishes.org

Facility Website: <http://ucmanor.org>

Sponsor: United Church Home Society, Inc.

Programs Offered:

Market Rate Housing Units: 1

Subsidized Housing Units: 49

FRANKLIN**The Alice Center**

45 6th Street
Malone, NY 12953-1220

Tel: 518-481-8000 / Fax: 518-481-8027

Facility Website: www.alicehyde.com

Sponsor: The University of Vermont Health Network - Alice Hyde Medical Center

Programs Offered:

Nursing Facility Beds: 135

Assisted Living Program (ALP) Beds: 30

FULTON**Nathan Littauer Hospital and Nursing Home**

99 East State Street
Gloversville, NY 12078-1203

Tel: 518-773-5611 / Fax: 518-773-5648

Facility Website: www.nlh.org

Sponsor: Nathan Littauer Hospital

Programs Offered:

Nursing Facility Beds: 84

Short Term Rehabilitation

Dialysis Treatment Center

GENESEE**New York State Veterans Home at Batavia**

220 Richmond Avenue
Batavia, NY 14020-1227

Tel: 585-345-2000 / Fax: 585-345-9030

Facility Website: www.nysvets.org

Sponsor: New York State Department of Health

Programs Offered:

Nursing Facility Beds: 126

Restorative Rehabilitation Program

Inhouse Comfort Care Program

Residential Day Care Program

Long Term Care Residential Service

Dementia Program

HERKIMER**Valley Health Services, Inc.**

690 West German Street
Herkimer, NY 13350-2135

Tel: 315-866-3330 / Fax: 315-866-6546

Facility Website: www.valleyhealthservices.org

Programs Offered:

Nursing Facility Beds: 160

Adult Day Health Care

Short-Term Inpatient

Sub-Acute Care

Physical Therapy

Occupational Therapy

Speech Therapy

Wound Care

IV Therapy

Palliative Care

Long-Term Skilled Nursing Care

Outpatient Rehabilitation including:

Physical Therapy

Occupational Therapy

Speech Therapy

Massage Therapy

Cardiac Rehabilitation

Valley Residential Services, Inc.

161 Valley Drive
Herkimer, NY 13350

Tel: 315-219-5700 / Fax: 315-866-0016

Corporate Website: www.valleyhealthservices.org

Facility Website:

www.valleyhealthservices.org/vrs.html

Programs Offered:

Enriched Housing Beds: 40

Assisted Living Program (ALP) Beds: 36

JEFFERSON**Ives Hill Retirement Community**

1200 Jewell Drive
Watertown, NY 13601-4247

Tel: 315-779-9590 / Fax: 315-779-1505

Facility Website: www.iveshillretirement.org

Sponsor: Heritage Ministries &
Henry Keep Home, Inc.

Programs Offered:

Enriched Housing and Independent Living

Enriched Housing Beds: 18

Market Rate Housing Units: 85

Samaritan Keep Home

133 Pratt Street
Watertown, NY 13601-0100

Tel: 315-785-4400 / Fax: 315-785-4488

Facility Website: www.samaritanhealth.com

Sponsor: Not-for-Profit 28A Corporation

Programs Offered:

Nursing Facility Beds: 272

Sub-Acute Rehabilitation

Dementia Care

Wound Care

Samaritan Summit Village

22691 Campus Drive
Watertown, NY 13601

Tel: 315-782-6800 / Fax: 315-782-6950

Facility Website: <https://samaritanhealth.com/ltc/facilities/samaritan-summit-village>

Programs Offered:

Nursing Facility Beds: 168

Assisted Living Program (ALP) Beds: 89

Assisted Living Residence (ALR) Beds: 31

*Enhanced Assisted Living Residence
(EALR) Beds: 31*

KINGS (BROOKLYN)**Brooklyn United Methodist Church Home**

1485 Dumont Avenue
Brooklyn, NY 11208-4705

Tel: 718-827-4500 / Fax: 718-277-1700

Facility Website: www.bumch.org

Programs Offered:

Nursing Facility Beds: 120

Cobble Hill Health Center

380 Henry Street
Brooklyn, NY 11201-6048

Tel: 718-855-6789 / Fax: 718-522-5164

Facility Website: www.cobblehill.org

Programs Offered:

Nursing Facility Beds: 364

Alzheimer's Special Care Unit

Dialysis Unit

Short-Term Rehabilitation

Sub-Acute Care

Palliative Care Program

Dr. Susan Smith McKinney Nursing & Rehabilitation Center

594 Albany Avenue
Brooklyn, NY 11203-1706

Tel: 718-245-7170 / Fax: 718-245-7060

Corporate Website:

www.nychealthandhospitals.org

Facility Website:

www.nychealthandhospitals.org/locations/mckinney

Programs Offered:

Nursing Facility Beds: 320

Adult Day Health Care

Hospice Care

Rehab Services

Diabetes Management

Sub Acute Care

KINGS (BROOKLYN)**Elderplan/Homefirst**

745 64th Street
Brooklyn, NY 11220
Tel: 718-921-7990

Corporate Website: www.mjhs.org
Facility Website: www.elderplan.org
Sponsor: MJHS
(Metropolitan Jewish Health System)

Programs Offered:

Managed Long Term Care

Menorah Center for Rehabilitation and Nursing Care

1516 Oriental Boulevard
Brooklyn, NY 11235-2328
Tel: 718-646-4441 / Fax: 718-615-6381

Facility Website: www.mjhs.org
Sponsor: MJHS
(Metropolitan Jewish Health System)

Programs Offered:

Nursing Facility Beds: 436

Norwegian Christian Home & Health Center

1250 67th Street
Brooklyn, NY 11219-5921
Tel: 718-232-2322 / Fax: 718-331-5111

Facility Website: www.nchhc.org

Programs Offered:

Nursing Facility Beds: 135
Market Rate Housing Units: 28
Assisted Living Program (ALP) Beds: 88
Outpatient Rehabilitation
Independent Living: 28 Beds
Respite: 2 beds

KINGS (BROOKLYN)**Rutland Nursing Home**

585 Schenectady Avenue
Brooklyn, NY 11203-1854
Tel: 718-604-5221 / Fax: 718-604-5622

Facility Website: www.kingsbrook.org/Programs-Services/Rutland-NursingHome.aspx
Sponsor: Kingsbrook Jewish Medical Center

Programs Offered:

Nursing Facility Beds: 466

Including:

Pulmonary Step-down Unit
Certified Ventilator Unit
Sub-Acute Rehabilitation Units
Intensive Wound Care
Palliative Care
Hospice Care
Long Term Care
Certified LTC Pediatric Unit
Young Adult Program

Saints Joachim & Anne Nursing & Rehabilitation Center

2720 Surf Avenue
Brooklyn, NY 11224-1913
Tel: 718-714-4800 / Fax: 718-266-1743

Facility Website: www.ssjoachim.org

Programs Offered:

Nursing Facility Beds: 200
Palliative Care
Rehabilitation
Short and Long Term Care
Respiratory Care
Wound Care
Hospice Care
Alzheimer's Care
Resident Services and Amenities
Ancillary Support and Services

KINGS (BROOKLYN)

The Schulman and Schachne Institute for Nursing and Rehabilitation

555 Rockaway Parkway
Brooklyn, NY 11212

Tel: 718-240-5775 / Fax: 718-240-6924

Facility Website: www.schulmanandschachne.org

Sponsor: Voluntary

Programs Offered:

Nursing Facility Beds: 448

Dementia

Subacute Care

AIDS Care

Geriatrics

Ventilator Care

Selfhelp 333 Lenox Road Apartments

333 Lenox Road
Brooklyn, NY 11226

Tel: 212-971-7710

Corporate Website: www.selfhelp.net

Sponsor: 333 Lenox Associates LLC/333 Lenox
Housing Development Fund Company, Inc.

Programs Offered:

Subsidized Housing Units: 58

LEWIS

Brookside Senior-Living Community

5701 Brookside Circle
Lowville, NY 13367-1228

Tel: 315-376-4333 / Fax: 315-376-4623

Facility Website: www.brooksideseiorliving.org

Sponsor: Adirondack Mennonite Retirement
Community, Inc.

Programs Offered:

Market Rate Housing Units: 88

Lewis County General Hospital & Residential Healthcare Facility

7785 North State Street
Lowville, NY 13367-1297

Tel: 315-376-5200 / Fax: 315-376-9317

Facility Website: www.lcgh.net

Programs Offered:

Nursing Facility Beds: 160

Adult Day Health Care

Hospice

40-Bed Dementia Care Unit

Short Term Rehabilitation

Bariatric Care

LIVINGSTON

Livingston County Center for Nursing and Rehabilitation

11 Murray Hill Drive
Mt. Morris, NY 14510

Tel: 585-243-7200 / Fax: 585-243-7269

Facility Website: www.co.livingston.state.ny.us/cnr.htm

Sponsor: Livingston County

Programs Offered:

Nursing Facility Beds: 266

Outpatient OT, PT, SLP

20 Slot Medical Model

26-Bed Transitional Care/Rehabilitation

48-Bed Memory Care

2 Respite/Terminal Care Suites

12-Bed Bariatric Care

Unit-650 lb. Capacity

Adult Day Health Care

MADISON**Crouse Community Center, Inc.**

101 South Street

Morrisville, NY 13408-9756

Tel: 315-684-9595 / Fax: 315-684-9275

Facility Website: www.crousecommunity.com**Programs Offered:***Nursing Facility Beds: 120**Outpatient Rehab – PT/OT/SLP**Adult Day Health Care**Morrisville and Sherburne***Oneida Healthcare Center
Extended Care Facility**

321 Genesee Street

Oneida, NY 13421-2691

Tel: 315-363-6000 / Fax: 315-361-2222

Facility Website: www.oneidahealthcare.org

Sponsor: Oneida Health Systems, Inc.

Programs Offered:*Nursing Facility Beds: 160**Including an 11 Bed Ventilator Unit**Designated Rehabilitation Unit**Services include OT, PT, Speech Therapy,**Respiratory Therapy***MONROE****Ashley Woods**

400 YMCA Way

Penfield, NY 14526

Tel: 585-978-8889 / Fax: 585-510-7334

Facility Website: www.EpiscopalSeniorLife.org

Sponsor: Episcopal SeniorLife Communities

Programs Offered:*Assisted Living Residence (ALR) Beds: 40**Enhanced Assisted Living Residence**(EALR) Beds: 8**Special Needs ALR**(EALR) Enhanced: 4**Special Needs Assisted Living Residence**(SNALR) Beds: 30***Beatrice Place**

600 Denise Road

Rochester, NY 14616

Tel: 585-546-8400 / Fax: 585-663-8538

Facility Website: www.EpiscopalSeniorLife.org

Sponsor: Episcopal SeniorLife Communities

Programs Offered:*Market Rate Housing Units: 73***Brentland Woods**

3831 East Henrietta Road

Henrietta, NY 14467

Tel: 585-546-8400 / Fax: 585-321-3289

Facility Website: www.EpiscopalSeniorLife.org

Sponsor: Episcopal SeniorLife Communities

Programs Offered:*Enriched Housing Beds: 60***Brickstone by St. John's Independent
Living Community**

1325 Elmwood Avenue

Rochester, NY 14620-3636

Tel: 585-271-1000 / Fax: 585-473-8856

Facility Website: www.stjohnsliving.org

Sponsor: St. John's

Programs Offered:*Market Rate Housing Units: 102*

MONROE**Edna Tina Wilson Living Center**

700 Island Cottage Road
Rochester, NY 14612-2312

Tel: 585-368-6100 / Fax: 585-368-6110

Corporate Website: www.rochesterregional.org

Facility Website: www.unityhealth.org/senior_services/skilled_nursing/seniors_nursing_edna.aspx

Sponsor: Rochester Regional Health

Programs Offered:

Nursing Facility Beds: 120

Adult Day Health Care

ElderONE

490 East Ridge Road
Rochester, NY 14621

Tel: 585-922-2831

Corporate Website: www.rochesterregional.org

Facility Website: www.rochestergeneral.org/centers-and-services/senior-services/elderone

Sponsor: Rochester Regional Health

Programs Offered:

PACE Program

Episcopal Church Home

505 Mount Hope Avenue
Rochester, NY 14620

Tel: 585-546-8400 / Fax: 585-325-6553

Facility Website: www.EpiscopalSeniorLife.org

Programs Offered:

Nursing Facility Beds: 182

Short-Term Rehabilitation

The Friendly Home

3156 East Avenue
Rochester, NY 14618-3428

Tel: 585-381-1600 / Fax: 585-789-3196

Facility Website: www.friendlyseniorliving.org

Sponsor: Private, Not-for-Profit

Programs Offered:

Nursing Facility Beds: 200

Short-Term Rehabilitation: 16 Beds

Memory Care: 24 Beds

MONROE**Jewish Home**

2021 Winton Road South
Rochester, NY 14618-3957

Tel: 585-427-7760 / Fax: 585-341-2495

Facility Website: www.jewishhomeroch.org

Sponsor: Jewish Home

Programs Offered:

Nursing Facility Beds: 240

Transitional Care: 88 Beds

Adult Day Health Care

Physician House Calls

Neurobehavioral Rehabilitation

Outpatient Rehabilitation

Living Well Companion Care

Marian's House (Adult Day Memory Care)

Short-Term Rehabilitation

The Clare and Jerry Rotenberg Institute on Aging

The Living Center at the Highlands

500 Hahnemann Trail
Pittsford, NY 14534-2356

Tel: 585-383-1700 / Fax: 585-383-9074

Facility Website: www.highlandsatpittsford.org

Sponsor: Strong Health-University of Rochester
Medical Center

Programs Offered:

Nursing Facility Beds: 122

Adult Day Health Care

Monroe Community Hospital

435 East Henrietta Road
Rochester, NY 14620-4629

Tel: 585-760-6500 / Fax: 585-760-6310

Facility Website: www.monroehosp.org

Sponsor: Monroe County

Programs Offered:

Nursing Facility Beds: 566

MONROE**Park Ridge Living Center**

1555 Long Pond Road
Rochester, NY 14626-4122

Tel: 585-723-7205 / Fax: 585-723-7118

Corporate Website: www.rochesterregional.org

Facility Website: www.rochesterregional.org/locations/rochester/Wegman-family-cottages

Sponsor: Rochester Regional Health

Programs Offered:

*Nursing Facility Beds: 120
Adult Day Health Care
Transitional Care Services*

Pinehurst

1000 Pine Trail
Honeoye Falls, NY 14472

Tel: 585-624-5970 / Fax: 585-624-5999

Facility Website: <https://EpiscopalSeniorLife.org>

Programs Offered:

Market Rate Housing Units: 68

Quinby Park Apartments

1030 Shoecraft Road
Webster, NY 14580-8988

Tel: 585-671-1450 / Fax: 585-785-6617

Facility Website:

www.nationalchurchresidences.org

Sponsor: National Church Residences

Programs Offered:

Subsidized Housing Units: 49

R. L. Edwards Manor

615 Clarissa Street
Rochester, NY 14608-2485

Tel: 585-546-4701 / Fax: 585-325-3593

Sponsor: Frederick Douglass HDFC

Programs Offered:

Subsidized Housing Units: 50

River Edge Manor

535 Mount Hope Avenue
Rochester, NY 14620

Tel: 585-546-8400 / Fax: 585-232-2025

Facility Website: www.EpiscopalSeniorLife.org

Sponsor: Episcopal SeniorLife Communities

Programs Offered:

*Market Rate Housing Units: 49
Independent Living Units: 49*

MONROE**Rochester Presbyterian Home**

256 Thurston Road
Rochester, NY 14619-1544

Tel: 585-235-9100 / Fax: 585-235-1315

Facility Website: www.rph.org

Sponsor: Presbyterian

Programs Offered:

*Assisted Living Residence (ALR) Beds: 102
Enhanced Assisted Living Residence
(EALR) Beds: 22
Special Needs Assisted Living Residence
(SNALR) Beds: 65*

Rockwood Center

3833 East Henrietta Road
Henrietta, NY 14467

Tel: 585-546-8400 / Fax: 585-334-5998

Facility Website: www.EpiscopalSeniorLife.org

Sponsor: Episcopal SeniorLife Communities

Programs Offered:

Subsidized Housing Units: 40

Seabury Woods

110 Dalaker Drive
Rochester, NY 14624

Tel: 585-546-8400 / Fax: 585-429-4625

Facility Website: www.EpiscopalSeniorLife.org

Programs Offered:

*Assisted Living Residence (ALR) Beds: 61
Enhanced Assisted Living Residence
(EALR) Beds: 8
Special Needs Assisted Living Residence
(SNALR) Beds: 24
Market Rate Housing (Patio Homes): 19*

St. Ann's Community at Cherry Ridge

900 Cherry Ridge Boulevard
Webster, NY 14580-4816

Tel: 585-697-6700 / Fax: 585-671-8255

Corporate Website: www.stannscommunity.com

Sponsor: St. Ann's Community of Greater Rochester

Programs Offered:

*Market Rate Housing Units: 126
Adult Home Beds: 87
Assisted Living Residence (ALR) Beds: 75
Enhanced Assisted Living Residence
(EALR) Beds: 15
Special Needs Assisted Living Residence
(SNALR) Beds: 26*

MONROE

St. Ann's Home

1500 Portland Avenue
Rochester, NY 14621-3065

Tel: 585-697-6000 / Fax: 585-336-9375

Corporate Website: www.stannscommunity.com

Sponsor: St. Ann's Community of Greater Rochester

Programs Offered:

*Nursing Facility Beds: 470
Transitional Care
Hospice and Palliative Care
Adult Day Health Care*

St. John's Home

150 Highland Avenue
Rochester, NY 14620-3099

Tel: 585-760-1300 / Fax: 585-461-5297

Facility Website: www.stjohnsliving.org

Sponsor: Church Affiliated

Programs Offered:

Nursing Facility Beds: 455

St. John's Meadows Independent Living Community

1 Johnsarbor Drive West
Rochester, NY 14620-3636

Tel: 585-442-1300 / Fax: 585-473-8856

Facility Website: www.stjohnsliving.org

Sponsor: St. John's

Programs Offered:

*Market Rate Housing Units: 262
Assisted Living/Enhanced Assisted Living Residence:
42 Beds
Subsidized Housing Units: 39*

The Summit at Brighton

2000 Summit Circle Drive
Rochester, NY 14618-3957

Tel: 585-341-2300 / Fax: 585-341-2391

Corporate Website: www.jewishseniorlife.org

Facility Website: www.summitbrighton.org

Programs Offered:

*Market Rate Housing Units: 90
CCRC with Jewish Home of Rochester and Wolk Manor*

MONROE

Unity Living Center

89 Genesee Street
Rochester, NY 14611-3285

Tel: 585-368-3411 / Fax: 585-368-3145

Corporate Website: www.rochesterregional.org

Facility Website: www.rochesterregional.org/locations/rochester/unity-living-center

Sponsor: Rochester Regional Health

Programs Offered:

*Nursing Facility Beds: 120
Including 10 chronic ventilator beds*

Valley Manor

1570 East Avenue
Rochester, NY 14610

Tel: 585-770-1901 / Fax: 585-442-6177

Facility Website: www.EpiscopalSeniorLife.org

Sponsor: Episcopal SeniorLife Communities

Programs Offered:

Market Rate Housing Units: 125

Wolk Manor

4000 Summit Circle Drive
Rochester, NY 14618-3957

Tel: 585-341-2345 / Fax: 585-341-2390

Corporate Website: www.jewishseniorlife.org

Facility Website: www.wolkmanor.org

Programs Offered:

*CCRC with Jewish Home of Rochester and
Summit at Brighton
Enriched Housing Beds: 67
Assisted Living Residence (ALR) Beds: 85
Enhanced Assisted Living Residence
(EALR) Beds: 20
Special Needs Assisted Living Residence
(SNALR) Beds: 18*

MONTGOMERY**Wilkinson Residential Health Care Facility**

4988 State Highway 30
Amsterdam, NY 12010

Tel: 518-841-3571 / Fax: 518-841-3734

Facility Website:

www.smha.org/locations/wilkinson

Sponsor: St. Mary's Healthcare

Programs Offered:

Nursing Facility Beds: 160

Adult Day Health Care

NASSAU**Northwell Health Stern Family Center for Rehabilitation**

330 Community Drive
Manhasset, NY 11030-3816

Tel: 516-562-8000 / Fax: 516-562-8064

Facility Website: www.northwell.edu

Sponsor: North Shore University Hospital

Programs Offered:

Nursing Facility Beds: 252

Admitting: 516-562-8065

Email: ecaltabi@nshs.edu

St. Hedwigs Gardens

Catholic Charities, 90 Cherry Lane
Hicksville, NY 11801-6299

Tel: 516-733-7076

Facility Website: www.catholiccharities.cc

Programs Offered:

Subsidized Housing Units: 27

NEW YORK (MANHATTAN)**129th St Residence -WSFSSH Inc.**

109 West 129th Street
New York, NY 10027

Tel: 212-348-8513 / Fax: 212-721-6043

Facility Website: www.wsfssh.org

Programs Offered:

Adult Home Beds: 92

ArchCare at Mary Manning WalshHome

1339 York Avenue
New York, NY 10021-4707

Tel: 212-628-2800 / Fax: 212-861-4178

Corporate Website: www.archcare.org

Facility Website:

www.archcare.org/mary-manning-walsh

Sponsor: Archdiocese of New York

Programs Offered:

Nursing Facility Beds: 360

Short-Term Rehab

Calvary Hospice Beds

ArchCare at Terence Cardinal Cooke Health Care Center

1249 Fifth Avenue
New York, NY 10029-4437

Tel: 212-360-1000 / Fax: 212-289-2739

Corporate Website: www.archcare.org

Facility Website:

www.archcare.org/terence-cardinal

Sponsor: Archdiocese of New York

Programs Offered:

Nursing Facility Beds: 615

ArchCare at Mother Cabrini Hospital Mary & Jim White

Unit for the Care of People with Huntington's Disease

HIV/AIDS Skilled Nursing

Transitional Subacute Unit

Outpatient Hemodialysis Unit

Outpatient Disabilities Clinic

NEW YORK (MANHATTAN)

ArchCare Senior Life (Program of All-inclusive Care for the Elderly – PACE)

1432 Fifth Avenue
New York, NY 10035
Tel: 866-263-9083

900 Intervale Avenue
Bronx, NY 10459
Main: 718-732-7171

88 Old Town Road
Staten Island, NY 10304
Main: 718-407-2916

115 Broadway
Dobbs Ferry, NY 10522
Main: 914-326-3199

Corporate Website: www.archcare.org/health-plans/senior-life

Facility Website: www.archcareseniorlife.org

Programs Offered:

PACE

Carnegie East House

1844 Second Avenue
New York, NY 10128-3862

Tel: 212-410-0033 / Fax: 212-410-5180

Facility Website: www.carnegieeast.org

Sponsor: James Lenox House Association

Programs Offered:

Enriched Housing Beds: 112

Referral to other services

Healthy Aging Program (HAP) including

Home Adaptation

NEW YORK (MANHATTAN)

Coler Rehabilitation and Nursing Care Center

900 Main Street
Roosevelt Island, NY 10044-0011
Tel: 212-848-6000 / Fax: 212-848-6900

Corporate Website:
www.nychealthandhospitals.org

Facility Website:
www.nychealthandhospitals.org/locations/coler

Programs Offered:

Nursing Facility Beds: 815

Memory Care

Rehabilitation Therapy

Wound Care

Palliative Care

Behavioral Health

Onsite Dialysis Den (8 chairs)

Onsite Clinics

Resident Computer Laboratory

Resident Fitness Center

Fleming House -WSFSSH Inc.

443-445 West 22nd Street
New York, NY 10011

Tel: 212-721-6032 / Fax: 212-721-6043

Facility Website: www.wsfssh.org

Programs Offered:

Adult Home Beds: 47

Gouverneur Healthcare Services

Skilled Nursing Facility
227 Madison Street
New York, NY 10002-7537

Tel: 212-441-5000 / Fax: 212-441-5040

Corporate Website: www.nychealthandhospitals.org
Facility Website: www.nychealthandhospitals.org/locations/gouverneur

Programs Offered:

Nursing Facility Beds: 295

NEW YORK (MANHATTAN)**Henry J. Carter Specialty Hospital & Nursing Facility**

1752 Park Avenue
New York, NY 10035

Tel: 646-686-0000

Corporate Website:
www.nychealthandhospitals.org

Facility Website:
www.nychealthandhospitals.org/locations/carter

Sponsor: New York City Health & Hospitals Corporation

Programs Offered:

Nursing Facility Beds: 164

Isabella Geriatric Center, Inc.

515 Audubon Avenue
New York, NY 10040-3403

Tel: 212-342-9200 / Fax: 212-927-4592

Facility Website: www.isabella.org

Sponsor: Voluntary Board of Directors

Programs Offered:

Nursing Facility Beds: 705

Long Term Home Health Care (LTHHC)

Adult Day Health Care

Short & Long Stay Rehabilitation

Dementia Care

Palliative Care

Institute for Older Adults

(50+Club & Walking Works Wonders Program)

Caring Partner Program

YUM Fresh Food Program

Home Health Aide Training

Certified Nurse Aide Training

Respite Care

Ventilator Dependent Care

Senior Resource Center

Home Care Agency

Case Management Program

JASA Housing Management & Development, Inc.

247 West 37th Street, 9th Floor
New York, NY 10018

Tel: 212-273-5230 / Fax: 212-695-3057

Facility Website: www.jasa.org

Sponsor: JASA Housing Management Company

NEW YORK (MANHATTAN)**Kurt and Leah Schneider Apartments (K&L) / WSFSSH**

11 West 102nd Street
New York, NY 10025

Tel: 212-663-0001 / Fax: 212-663-0002

Facility Website: <https://wsfssh.org/building/kl-schneider-apartments>

Sponsor: West Side Federation for Senior and Supportive Housing (WSFSSH)

Programs Offered:

Subsidized Housing Units: 54

The New Jewish Home, Community Services Division

120 West 106th Street
New York, NY 10025

Tel: 212-870-4837 / Fax: 212-870-4652

Facility Website: www.jewishhome.org

Programs Offered:

Licensed Home Care Services Agency (LHCSA)

Long Term Home Health Care (LTHHC)

Certified Home Health Agency (CHHA)

Adult Day Health Care

Social Day Care

The New Jewish Home, Manhattan

120 West 106th Street
New York, NY 10025-3712

Tel: 212-870-5000 / Fax: 212-870-5718

Facility Website: www.jewishhome.org

Sponsor: Private

Programs Offered:

Nursing Facility Beds: 514

Market Rate Housing Units: 186

Assisted Living Program (ALP) Beds: 72

Adult Day Health Care:

Locations in Manhattan and the Bronx

NEW YORK (MANHATTAN)

New York Foundation for Senior Citizens, Inc.

11 Park Place, Suite 1416
 New York, NY 10007-2801
 Tel: 212-369-5523 / Fax: 212-227-2952
 Facility Website: www.nyfsc.org

Programs Offered:

Enriched Housing Beds: 39
Subsidized Housing Units: 279

St. Margaret's House

49 Fulton Street
 New York, NY 10038-2055
 Tel: 212-766-8122 / Fax: 212-571-1634
 Facility Website: www.smhny.org

Sponsor: Trinity Church Wall Street

Programs Offered:

Subsidized Housing Units: 249

St. Mary's Episcopal Center Inc.

516 West 126th Street
 New York, NY 10027-2406
 Tel: 212-662-1826 / Fax: 646-619-6265
 Facility Website: www.stmarysharlem.com

Programs Offered:

Nursing Facility Beds: 40
Adult Day Health Care
Aids Adult Day Health Care Program

Vista On 5th

1261 Fifth Avenue
 New York, NY 10029-3822
 Tel: 212-534-6464 / Fax: 212-534-1184
 Facility Website: www.vistaon5th.org

Programs Offered:

Enriched Housing Beds: 127
Assisted Living Program (ALP) Beds: 127

NEW YORK (MANHATTAN)

VNS Health

220 East 42nd Street
 New York, NY 10017
 Tel: 800-675-0391 / Fax: 212-794-6357
 Facility Website: www.vnsny.org

Programs Offered:

Licensed Home Care Services Agency (LHCSA)
Long Term Home Health Care (LTHHC)
Certified Home Health Agency (CHHA)
Hospice
Medicaid and Medicare Health Plans:
VNSNY CHOICE Medicare
VNSNY Choice Managed
Long Term Care (MLTC)
VNSNY CHOICE MLTC Plus (Medicare Advantage)
Skilled Nursing Care
Home Health Aide Services
Physical, Speech, and
Occupational Therapy
Social Work Services
Home Infusion Therapy
Mental Health Services
Elder Care - Consultation and Case
Clinical Triage/Demand
Management Services
Home Care for Persons with HIV/AIDS
Nursing Home Assessments
Nutrition Counseling

Wien House

60 Nagle Avenue
 New York, NY 10040-1400
 Tel: 212-304-1800 / Fax: 212-304-0681
 Facility Website: www.ywashhts.org
 Sponsor: YM & YWHA of Washington Heights & Inwood

Programs Offered:

Subsidized Housing Units: 99

NIAGARA**Ascension Living Our Lady of Peace**

5285 Lewiston Road

Lewiston, NY 14092-1942

Tel: 716-298-2900 / Fax: 716-298-2800

Facility Website: www.ladyofpeace.org

Sponsor: Ascension Senior Living

Programs Offered:*Nursing Facility Beds: 250**Alzheimer/Dementia Unit: 42 Beds**Rehabilitation Unit: 40 Beds***DeGraff Memorial Hospital SNF**

445 Tremont Street

North Tonawanda, NY 14120

Tel: 716-694-4500 / Fax: 716-690-2118

Facility Website: <http://degraff.kaleidahealth.org>**Programs Offered:***Nursing Facility Beds: 80**Including 20 Sub-Acute Rehabilitation Beds***Sawyer Gardens**  

2132 Sawyer Drive

Niagara Falls, NY 14304-2987

Tel: 716-298-3529 / Fax: 716-298-1168

Facility Website:

www.nationalchurchresidences.org

Sponsor: National Church Residences

Programs Offered:*Subsidized Housing Units: 58***Schoellkopf Health Center**

621 Tenth Street

Niagara Falls, NY 14302-0708

Tel: 716-278-4578 / Fax: 716-278-4876

Facility Website: www.nfmmc.org

Sponsor: Schoellkopf Health Center

Programs Offered:*Nursing Facility Beds: 120**All Private Rooms**Short-Term Rehabilitation**Sub-Acute Care**Dedicated Hospice Unit***NIAGARA****Summit View Place**  

7210 Williams Road

Niagara Falls, NY 14304

Tel: 716-283-8439 / Fax: 716-283-8440

Facility Website:

www.nationalchurchresidences.org**Programs Offered:***Subsidized Housing Units: 77***Wheatfield Towers**  

6849 Plaza Drive

Niagara Falls, NY 14304-2960

Tel: 716-731-4600 / Fax: 716-731-2996

Facility Website:

www.nationalchurchresidences.org

Sponsor: National Church Residences

Programs Offered:*Subsidized Housing Units: 100*

ONEIDA**Charles T. Sitrin Health Care Center, Inc.**

2050 Tilden Avenue, Box 1000
New Hartford, NY 13413-1000

Tel: 315-797-3114 / Fax: 315-797-6955

Facility Website: www.sitrin.com

Sponsor: Jewish

Programs Offered:

Nursing Facility Beds: 156

Adult Day Health Care

Rehabilitation

Long Term Care

Respite

Sub-Acute Inpatient: 46 Beds

Physical Therapy

Occupational Therapy

Aquatic Therapy

Speech Therapy/Audiology

STARS Adaptive Sports Program

Dental Services

Wellness Program

Pediatric Therapy

Neuro Care: 32 Beds

The Community at Sunset Wood

118 Genesee Street
New Hartford, NY 13413

Tel: 315-733-1389 / Fax: 315-733-1396

Facility Website: www.sunsetwood.org

Programs Offered:

Market Rate Housing Units: 66

Independent Senior Living

Eastern Star Home

8290 State Route 69, PO Box 959
Oriskany, NY 13424-0959

Tel: 315-736-9311 / Fax: 315-736-3047

Facility Website: www.eshomeny.org

Sponsor: Order of the Eastern Star of the State of New York

Programs Offered:

Nursing Facility Beds: 84

ONEIDA**Lutheran Care Charitable Network, Inc.**

108-110 Utica Road
Clinton, NY 13323-1548

Tel: 315-853-5515 / Fax: 315-853-4057

Corporate Website:

www.CommunityWellnessPartners.org

Facility Website: www.lutherancare.org

Sponsor: Lutheran Care Charitable Network

Programs Offered:

Nursing Facility Beds: 280

Including:

40-bed Dementia Unit

40-bed Sub-Acute Rehab Unit

Adult Home Beds: 68

Enhanced Assisted Living Residence

(EALR) Beds: 14

Special Needs Assisted Living Residence

(SNALR) Beds: 14

Masonic Care Community of New York

2150 Bleecker Street
Utica, NY 13501-1788

Tel: 315-798-4800 / Fax: 315-798-4901

Facility Website: www.mccny.com

Sponsor: Fraternal

Programs Offered:

Nursing Facility Beds: 320

Market Rate Housing Units: 135

Adult Home Beds: 96

Licensed Home Care Services Agency (LHCSA)

Certified Home Health Agency (CHHA)

MVHS Rehabilitation & Nursing Center

1650 Champlin Avenue
Utica, NY 13502

Tel: 315-624-8600 / Fax: 315-624-8698

Facility Website: <http://mvhealthsystem.org/rnc>

Sponsor: Mohawk Valley Health System

Programs Offered:

Nursing Facility Beds: 202

including a 40 bed Rehabilitation Unit

ONEIDA**Presbyterian Residential Community, Inc.**

4300 Middle Settlement Road

PO Box 1144

New Hartford, NY 13413-0717

Tel: 315-235-2810 / Fax: 315-724-7470

Corporate Website: www.presbyterianhome.com

Facility Website:

www.presbyterianhome.com/residential

Sponsor: Community Wellness Partners, Inc.

Programs Offered:*Adult Home Beds: 18**Assisted Living Program (ALP) Beds: 78**Licensed Home Care Services Agency (LHCSA)**Social Adult Day Care**Wellness Center***Preswick Glen, Inc.**

55 Preswick Drive

New Hartford, NY 13413

Tel: 315-734-9586 / Fax: 315-624-3696

Corporate Website: www.presbyterianhome.comFacility Website: www.preswickglen.com

Sponsor: Community Wellness Partners, Inc.

Programs Offered:*Market Rate Housing Units: 124***ONONDAGA****Bernardine Apartments, Inc.**

417 Churchill Avenue

Syracuse, NY 13205-2124

Tel: 315-469-7786 / Fax: 315-469-4048

Facility Website: www.loretto-cny.org

Sponsor: Bernardine Apartments, Inc.

Programs Offered:*Enriched Housing Beds: 78**Assisted Living Program (ALP) Beds: 70**Subsidized Housing Units: 38**With Licensed Capacity for:**12 EHP Beds**16 ALP Beds***Buckley Landing**

7430 Buckley Road

North Syracuse, NY 13212-1959

Tel: 315-452-1207 / Fax: 315-362-0028

Facility Website: <https://www.loretto-cny.org/locations/buckley-landing>**Programs Offered:***Enriched Housing Beds: 15**Assisted Living Program (ALP) Beds: 75***The Cottages at Garden Grove**

5460 Meltzer Court

Cicero, NY 13039

Tel: 315-657-6489 / Fax: 315-571-0800

Facility Website: www.cottagesatgardengrove.org

Sponsor: Plaza Nursing Home Co., Inc.

Programs Offered:*Nursing Facility Beds: 156***Fairmount Gardens** 

4913 West Genesee Street

Camillus, NY 13031-2349

Tel: 315-488-1932 / Fax: 315-488-1933

Facility Website:

www.nationalchurchresidences.org

Sponsor: National Church Residences

Programs Offered:*Subsidized Housing Units: 43*

ONONDAGA**Iroquois Nursing Home, Inc.**

4600 Southwood Heights Drive
Jamesville, NY 13078-9595

Tel: 315-469-1300 / Fax: 315-469-5545

Facility Website: www.iroquoisnursing.org

Programs Offered:

Nursing Facility Beds: 160

**Jewish Home of Central New York, Inc.
at Menorah Park**

4101 East Genesee Street
Syracuse, NY 13214-2103

Tel: 315-446-9111 / Fax: 315-446-3099

Facility Website: www.menorahparkofcny.com

Sponsor: Jewish

Programs Offered:

Nursing Facility Beds: 132

Market Rate Housing Units: 50

Subsidized Housing Units: 12

Respite Care

Hospitality

Kosher Catering

Loretto at The Heritage

750 East Brighton Avenue
Syracuse, NY 13205

Tel: 315-492-1329 / Fax: 315-492-6076

Facility Website: www.loretto-cny.org

Programs Offered:

Enriched Housing Beds: 35

Assisted Living Program (ALP) Beds: 44

Loretto Health & Rehabilitation Center

700 East Brighton Avenue
Syracuse, NY 13205-2201

Tel: 315-469-5570 / Fax: 315-469-6558

Facility Website: www.loretto-cny.org

Programs Offered:

Nursing Facility Beds: 583

Adult Day Health Care

ONONDAGA**Nascentia Health**

1050 West Genesee Street
Syracuse, NY 13204

Tel: 888-477-HOME / Fax: 315-477-9378

Facility Website: www.nascentiahealth.org

Programs Offered:

Long Term Home Health Care (LTHHC)

Social Adult Day Care

Certified Home Health Agency (CHHA)

Managed Long Term Care Insurance

Medicare Advantage Plan HMD, SNP

Nascentia Health Options

1050 West Genesee Street
Syracuse, NY 13204

Tel: 888-477-HOME / Fax: 315-477-9590

Corporate Website: www.nascentiahealth.org

Facility Website: www.nascentiahealthoptions.org

Programs Offered:

Managed Long Term Care

The Nottingham

1301 Nottingham Road
Jamesville, NY 13078-9312

Tel: 315-445-9242 / Fax: 315-446-5346

Corporate Website: www.loretto-cny.org

Facility Website:

www.lorettocny.org/locations/nottingham

Sponsor: Loretto

Programs Offered:

Nursing Facility Beds: 40

Enriched Housing Beds: 48

Market Rate Housing Units: 186

PACE CNY

100 Malta Lane
North Syracuse, NY 13212-2375

Tel: 315-452-5800 / Fax: 315-452-5739

Corporate Website: www.loretto-cny.org

Facility Website: www.pacecny.org

Programs Offered:

Managed Long Term Care

PACE Program

ONONDAGA**Pitcher Hill Apartments**

114 Elbow Road

North Syracuse, NY 13202

Tel: 315-454-0697 / Fax: 315-454-0053

Facility Website: www.christopher-community.org

Sponsor: Christopher Communities

Programs Offered:*Subsidized Housing Units: 100***Providence House Apartments**

1700 West Onondaga Street

Syracuse, NY 13204

Tel: 315-471-8427 / Fax: 315-474-1224

Facility Website: www.christopher-community.org

Sponsor: Christopher Community Inc.

Programs Offered:*Subsidized Housing Units: 100***Sedgwick Heights**

1100 James Street

Syracuse, NY 13203

Tel: 315-475-4388 / Fax: 315-671-1798

Facility Website: www.loretto-cny.org**Programs Offered:***Adult Home Beds: 154**Assisted Living Program (ALP) Beds: 140***Solvay Senior Apartments**  

200 Russet Lane

Solvay, NY 13209-2060

Tel: 315-468-6590 / Fax: 315-484-7931

Facility Website:

www.nationalchurchresidences.org

Sponsor: National Church Residences

Programs Offered:*Subsidized Housing Units: 49***ONONDAGA****St. Camillus RHC**

813 Fay Road

Syracuse, NY 13219-3098

Tel: 315-488-2951 / Fax: 315-703-0640

Facility Website: www.st-camillus.org**Programs Offered:***Nursing Facility Beds: 280**Certified Home Health Agency (CHHA)**Continuing Care**Hospice**Rehabilitation Counseling**Brain Injury Rehabilitation**Subacute Rehabilitation**Medical Transportation**EISEP**Palliative Care Services**TBI Waiver**Dialysis***Syracuse Home Association**

7740 Meigs Road

Baldwinsville, NY 13027-9757

Tel: 315-638-2521 / Fax: 315-638-2552

Facility Website: www.syracusehomeassn.org**Programs Offered:***Nursing Facility Beds: 120**Short-Term Rehabilitation**Respite Care**Independent Retirement Living*

ONTARIO**Autumn Grove**  

1325 East Victor Road
Victor, NY 14564-9532

Tel: 585-924-8740 / Fax: 585-924-4901

Facility Website:

www.nationalchurchresidences.org

Sponsor: National Church Residences

Programs Offered:

Subsidized Housing Units: 49

**Clifton Springs Hospital and Clinic
Extended Care**

2 Coulter Road

Clifton Springs, NY 14432-1122

Tel: 315-462-0557 / Fax: 315-462-2487

Corporate Website: www.rochesterregional.org

Facility Website: www.rochesterregional.org/locations/clifton-springs/clifton-springs-hospital-and-clinic-exte

Sponsor: Rochester Regional Health

Programs Offered:

Nursing Facility Beds: 108

Skilled Nursing: 50 Beds

Dementia: 25 Beds

Chronic Vent: 18 Beds

Short-Term Rehab: 15 Beds

Living Center at Geneva-North

196 North Street

Geneva, NY 14456-1694

Tel: 315-787-4730 / Fax: 315-787-4812

Facility Website: www.flhealth.org

Programs Offered:

Nursing Facility Beds: 82

Living Center at Geneva-South

196 North Street

Geneva, NY 14456-1651

Tel: 315-787-4730 / Fax: 315-787-4812

Facility Website: www.flhealth.org

Sponsor: Not-for-Profit

Programs Offered:

Nursing Facility Beds: 103

Adult Day Health Care

ONTARIO**M. M. Ewing Continuing Care Center**

350 Parrish Street

Canandaigua, NY 14424-1731

Tel: 585-396-6040 / Fax: 585-396-6219

Facility Website: www.thompsonhealth.com/

[Senior-Living/MM-Ewing-Continuing-Care-Center](#)

Sponsor: Non-profit voluntary

Programs Offered:

Nursing Facility Beds: 178

Post Acute/Rehabilitative Services

Dementia Care Services

Long-Term Services

Quail Summit

5102 Parrish Street Ext.

Canandaigua, NY 14424

Tel: 585-396-1010 / Fax: 585-396-1741

Facility Website: www.quailsummit.com

Programs Offered:

Enriched Housing Beds: 55

ORANGE**Glen Arden, Inc.**

214 Harriman Drive
Goshen, NY 10924-2410

Tel: 845-360-1400 / Fax: 845-291-7878

Facility Website: www.glenardenny.com

Programs Offered:

CCRC Including

Nursing Facility Beds: 40

Enriched Housing Beds: 28

Market Rate Housing Units: 148

Schervier Pavilion

22 Van Duzer Place
Warwick, NY 10990-1035

Tel: 845-987-5717 / Fax: 845-987-1398

Facility Website:

[www.stanthonycommunityhosp.org/
long-term-care-schervier-pavilion](http://www.stanthonycommunityhosp.org/long-term-care-schervier-pavilion)

Programs Offered:

Nursing Facility Beds: 120

Admissions: 845-987-5706

**St. Joseph's Place at Bon Secours
Community Hospital**

160 E. Main Street
Port Jervis, NY 12771-2253

Tel: 845-858-7070 / Fax: 845-858-7406

Facility Website: [www.goodsamhosp.org/
our-services-long-term-care-st-josephs-place.html](http://www.goodsamhosp.org/our-services-long-term-care-st-josephs-place.html)

Sponsor: Bon Secours Charity Health System, Inc.

Programs Offered:

Nursing Facility Beds: 46

**The Valley View Center for Nursing Care
and Rehabilitation**

2 Glenmere Cove Road
Goshen, NY 10924-0059

Tel: 845-291-4740 / Fax: 845-291-4715

Facility Website: [www.co.orange.ny.us/content/
124/1380/default.aspx](http://www.co.orange.ny.us/content/124/1380/default.aspx)

Sponsor: Orange County

Programs Offered:

Nursing Facility Beds: 360

Certified Home Health Agency

OSWEGO**Bishop's Commons**

4 Burkle Street
Oswego, NY 13126

Tel: 315-349-0799 / Fax: 315-349-0797

Corporate Website: www.stlukehs.com

Facility Website: www.bcommons.com

Sponsor: St. Luke Health Services

Programs Offered:

Enriched Housing Beds: 60

Seneca Hill Manor, Inc.

20 Manor Drive
Oswego, NY 13126-6496

Tel: 315-349-5300 / Fax: 315-349-5316

Facility Website: www.oswegohealth.org

Programs Offered:

Nursing Facility Beds: 120

Short-Term Rehab Services

Adult Day Health Care

**Springside at Seneca Hill
Retirement Community**

10 County Route 45A
Oswego, NY 13126-4402

Tel: 315-343-5658 / Fax: 315-207-0179

Facility Website: [www.oswegohealth.org/
retirement-living](http://www.oswegohealth.org/retirement-living)

Sponsor: Oswego Health

Programs Offered:

Market Rate Housing Units: 44

St. Francis Commons

12 Burkle Street
Oswego, NY 13126

Tel: 315-326-0870 / Fax: 315-326-0871

Corporate Website: www.stlukehs.com

Facility Website: www.stfranciscommons.com

Programs Offered:

Adult Home Beds: 60

Assisted Living Program (ALP) Beds: 60

Assisted Living Residence (ALR) Beds: 60

Special Needs Assisted Living Residence

(SNALR) Beds: 14

OSWEGO

St. Luke Apartments

131 West First Street
Oswego, NY 13126

Tel: 315-343-0821 / Fax: 315-343-0619

Facility Website: www.christopher-community.org

Sponsor: Christopher Community Inc.

Programs Offered:

Subsidized Housing Units: 100

St. Luke Health Services

299 East River Road
Oswego, NY 13126-9302

Tel: 315-342-3166 / Fax: 315-343-6531

Facility Website: www.stlukehs.com

Sponsor: Catholic

Programs Offered:

Nursing Facility Beds: 200

Adult Day Health Care

St. Luke Home Health Services

4 Burkle Street
Oswego, NY 13126

Tel: 315-349-0798 / Fax: 315-349-0797

Facility Website: www.stlukehs.com

Sponsor: Not-for-Profit

Programs Offered:

Licensed Home Care Services Agency (LHCSA)

OTSEGO

A.O. Fox Memorial Hospital Nursing Home

1 Norton Avenue
Oneonta, NY 13820-2629

Tel: 607-431-5980 / Fax: 607-431-5278

Facility Website: <https://www.bassett.org/locations/ao-fox-nursing-home>

Sponsor: Community

Programs Offered:

Nursing Facility Beds: 130

IV Therapy/Antibiotics

Short-Term Rehabilitation

Respiratory Therapy

Wound Care Management

Respite Care

Clara Welch Thanksgiving Home

48 Grove Street
Cooperstown, NY 13326-1427

Tel: 607-547-8844 / Fax: 607-547-9306

Facility Website:
www.clarawelchthanksgivinghome.org

Programs Offered:

Adult Home Beds: 26

QUEENS

Archbishop Iakovos Senior Residence

32-06 21 Street

Astoria, NY 11106-4561

Tel: 212-840-8005 / Fax: 212-840-8384

Corporate Website: www.hanac.org

Facility Website:

www.hanac.org/affordable-housing.php

Sponsor: HANAC, Inc.

Programs Offered:

Subsidized Housing Units: 99

Chapin Home For The Aging

165-01 Chapin Parkway

Jamaica Hills, NY 11432-1807

Tel: 718-739-2523 / Fax: 718-291-0989

Facility Website: www.chapinhome.org

Sponsor: Chapin Home for the Aging Corporation

Programs Offered:

Nursing Facility Beds: 220

Flushing House

38-20 Bowne Street

Flushing, NY 11354-5638

Tel: 718-762-3198 / Fax: 718-358-2769

Corporate Website:

www.unitedadultministries.org

Facility Website: www.flushinghouse.com

Sponsor: United Adult Ministries

Programs Offered:

Market Rate Housing Units: 319

QUEENS

Jamaica Hospital Nursing Home, The Center for Comprehensive Nursing and Rehab

89-40 135th Street

Jamaica, NY 11418

Tel: 718-206-5000 / Fax: 718-206-5005

Facility Website:

<https://jamaicahospitalnursinghome.org>

Sponsor: Jamaica Hospital Medical Center

Programs Offered:

Nursing Facility Beds: 228

New York State Veterans Home at St. Albans

178-50 Linden Boulevard

Jamaica, NY 11434-1467

Tel: 718-990-0300 / Fax: 718-481-6860

Facility Website: www.nysvets.org

Programs Offered:

Nursing Facility Beds: 250

Alzheimer's/Dementia Unit

Sub-Acute Care

Ozanam Hall of Queens Nursing Home, Inc.

42-41 201st Street

Bayside, NY 11361-2550

Tel: 718-423-2000 / Fax: 718-971-2071

Corporate Website: www.carmelitesystem.org

Facility Website: www.ozanamhall.org

Sponsor: Carmelite System, Inc/

Diocese of Brooklyn and Queens

Programs Offered:

Nursing Facility Beds: 432

Short-Term Rehabilitation

Calvary Hospice Unit

Parker Jewish Institute for Health Care and Rehabilitation

271-11 76th Avenue

New Hyde Park, NY 11040-1433

Tel: 718-289-2100 / Fax: 718-289-2323

Facility Website: www.parkerinstitute.org

Programs Offered:

Nursing Facility Beds: 527

Certified Home Health Agency (CHHA)

Hospice

Research and Grants

Parker-At-Your-Door

Queens - Long Island Renal Institute

QUEENS

Queen of Peace Residence

110-30 221st Street

Queens Village, NY 11429-2531

Tel: 718-464-1800 / Fax: 347-626-2198

Corporate Website:

www.littlesistersofthepoorbronx.org

Facility Website:

<http://littlesistersofthepoorqueens.org>

Sponsor: Roman Catholic:

Little Sisters of the Poor

Programs Offered:

Nursing Facility Beds: 53

Market Rate Housing Units: 26

Queens B'nai B'rith Housing Development Fund Co., Inc.

138-49 Elder Avenue

Flushing, NY 11355-4070

Tel: 718-358-1166 / Fax: 718-353-0725

Sponsor: B'nai B'rith International

Programs Offered:

Subsidized Housing Units: 190

Selfhelp Harry & Jeanette Weinberg House

140-16 45th Avenue

Flushing, NY 11355-3089

Tel: 718-886-1412 / Fax: 718-886-1618

Facility Website: www.selfhelp.net

Programs Offered:

Subsidized Housing Units: 65

Social Services

Selfhelp Helen R. Scheuer House/ Selfhelp Weinberg Apartments

45-25 Kissena Boulevard

Flushing, NY 11355

Tel: 718-445-9504 / Fax: 718-886-0423

Facility Website: www.selfhelp.net

Programs Offered:

Subsidized Housing Units: 134

Social Services

Senior Center

QUEENS

Selfhelp KVII Associates

137-39 45th Avenue

Flushing, NY 11355-4094

Tel: 212-971-7715 / Fax: 212-967-4784

Corporate Website: www.selfhelp.net

Sponsor: Selfhelp Community Services, Inc.

Programs Offered:

Subsidized Housing Units: 91

Selfhelp Martin Lande House

137-47 45th Avenue

Flushing, NY 11355-4000

Tel: 718-762-6803 / Fax: 718-762-6823

Facility Website: www.selfhelp.net

Programs Offered:

Subsidized Housing Units: 288

Social Services

Senior Center

Selfhelp Scheuer House of Bayside

208-11 26th Avenue

Bayside, NY 11360-2462

Tel: 718-225-2677 / Fax: 718-225-0346

Facility Website: www.selfhelp.net

Programs Offered:

Subsidized Housing Units: 149

Social Services

Selfhelp Scheuer House of Flushing

138-52 Elder Avenue

Flushing, NY 11355-6014

Tel: 718-359-0860 / Fax: 718-359-1561

Facility Website: www.selfhelp.net

Programs Offered:

Market Rate Housing Units: 26

Subsidized Housing Units: 132

Social Services

QUEENS**The Silvercrest Center for Nursing and Rehabilitation**

144-45 87th Avenue

Briarwood, NY 11435

Tel: 718-480-4000 / Fax: 718-480-4028

Facility Website: www.silvercrest.orgSponsor: New York-Presbyterian
Health Care System**Programs Offered:***Nursing Facility Beds: 320**80 Ventilator Beds**40 Subacute Beds**Sub-Acute Ventilator Unit: 20 Beds**New York-Presbyterian Healthcare System**Affiliated with Weill Cornell***St. Mary's Healthcare System for Children**

29-01 216th Street

Bayside, NY 11360-2810

Tel: 718-281-8800 / Fax: 718-281-8547

Facility Website: www.stmaryskids.org**Programs Offered:***Nursing Facility Beds: 124**Licensed Home Care Services Agency (LHCSA)**Center for Pediatric Feeding**Palliative Care**Respiratory Care**Rehabilitation**Early Education**Therapeutic Recreation**Health Home**Medical Day Health Care***RENSSELAER****Branson Manor Senior Apartments**

3 Grandview Drive

Rensselaer, NY 12144-9499

Tel: 518-283-8280 / Fax: 518-283-8292

Facility Website: www.depaulhousing.com

Sponsor: Roman Catholic Diocese of Albany

Programs Offered:*Subsidized Housing Units: 79***Castle Hill** 

114 Green Avenue

Castleton-On-Hudson, NY 12033-1400

Tel: 518-732-4263 / Fax: 518-732-4213

Facility Website:

www.nationalchurchresidences.org

Sponsor: National Church Residences

Programs Offered:*Subsidized Housing Units: 40***Eddy Hawthorne Ridge**

30 Community Way

East Greenbush, NY 12061-3918

Tel: 518-833-1111 / Fax: 518-279-5307

Corporate Website: www.sphp.comFacility Website: www.eddyseniorliving.com/eddyhawthorneridge

Sponsor: The Eddy/St. Peter's Health Partners

Programs Offered:*Market Rate Housing Units: 50**Assisted Living Apartments: 12**Memory Care Assisted Living: 54*

RENSELAER**Eddy Heritage House Nursing and Rehabilitation Center**

2920 Tibbits Avenue
Troy, NY 12180-7041

Tel: 518-274-4125 / Fax: 518-274-4337

Corporate Website: www.sphp.com

Facility Website: www.nehealth.com/Senior_Services/Nursing_Homes/Eddy_Heritage_House_Nursing_Center

Sponsor: The Eddy/St. Peter's Health Partners

Programs Offered:

*Nursing Facility Beds: 120
Including 2 Respite Beds
Subacute Rehabilitation*

Eddy Memorial Geriatric Center

2256 Burdett Avenue
Troy, NY 12180-2400

Tel: 518-274-9890 / Fax: 518-274-5407

Facility Website: www.sphp.com

Sponsor: The Eddy/St. Peter's Health Partners

Programs Offered:

*Nursing Facility Beds: 80
Enriched Housing Beds: 67*

St. Jude Apartments

50 Dana Avenue
Wynantskill, NY 12198-7975

Tel: 518-283-5690 / Fax: 518-283-5893

Facility Website: www.depaulhousing.com

Sponsor: Roman Catholic Diocese of Albany

Programs Offered:

Subsidized Housing Units: 49

Van Rensselaer Manor

85 Bloominggrove Drive
Troy, NY 12180-8404

Tel: 518-283-2000 / Fax: 518-283-2433

Facility Website: www.vanrenselaermanor.com

Sponsor: Rensselaer County

Programs Offered:

Nursing Facility Beds: 362

RICHMOND (STATEN ISLAND)**ArchCare at Carmel Richmond Healthcare and Rehabilitation Center**

88 Old Town Road
Staten Island, NY 10304-4299

Tel: 718-979-5000 / Fax: 718-979-8027

Corporate Website: www.archcare.org

Facility Website:
www.archcare.org/carmel-richmond

Sponsor: Archdiocese of New York

Programs Offered:

*Nursing Facility Beds: 300
Short-Term Rehabilitation*

Eger Harbor House, Inc.

110 Meisner Avenue
Staten Island, NY 10306-1236

Tel: 718-554-8700 / Fax: 718-554-8707

Facility Website: www.eger.org

Sponsor: Eger Lutheran Homes and Services, Inc.

Programs Offered:

*Enriched Housing Beds: 75
Assisted Living Program (ALP) Beds: 75*

Sea View Hospital Rehabilitation Center & Home

460 Brielle Avenue
Staten Island, NY 10314

Tel: 718-317-3000 / Fax: 718-351-7898

Corporate Website: www.nychealthandhospitals.org

Facility Website:
www.nychealthandhospitals.org/Seaview

Sponsor: New York City Health & Hospitals Corporation

Programs Offered:

Nursing Facility Beds: 304

ROCKLAND**Fellowship Community**

241 Hungry Hollow Road
Chestnut Ridge, NY 10977-6111

Tel: 845-356-8494 / Fax: 845-356-8468

Facility Website: www.fellowshipcommunity.org

Sponsor: Rudolf Steiner Fellowship Foundation, Inc.

Programs Offered:

Adult Home Beds: 33

Subsidized Housing Units: 25

Including 8 single rooms without cooking facilities

Helen Hayes Hospital

51-55 Route 9W

West Haverstraw, NY 10993-1127

Tel: 845-786-4000 / Fax: 845-786-4692

Facility Website: www.helenhayeshospital.org

Programs Offered:

Nursing Facility Beds: 25

Subacute Rehabilitation

Transitional Care Unit: 24 Beds

Northern Riverview Healthcare Center

87 South Route 9W

Haverstraw, NY 10927

Tel: 845-429-5381 / Fax: 845-429-3001

Facility Website: www.northernriverview.com

Sponsor: Northern Services Group

Programs Offered:

Nursing Facility Beds: 180

SARATOGA**Bishop Hubbard Senior Apartments**

54 Katherine Drive

Clifton Park, NY 12065-4530

Tel: 518-383-2705 / Fax: 518-383-6350

Facility Website: www.depaulhousing.com

Sponsor: Roman Catholic Diocese of Albany

Programs Offered:

Subsidized Housing Units: 49

Doubleday Woods  

91 Church Avenue

Ballston Spa, NY 12020-1929

Tel: 518-885-1900 / Fax: 518-884-2701

Facility Website:

www.nationalchurchresidences.org

Sponsor: National Church Residences

Programs Offered:

Subsidized Housing Units: 95

Embury Apartments

133 Lawrence Street

Saratoga Springs, NY 12866-1338

Tel: 518-587-3300 / Fax: 518-691-1450

Corporate Website: www.thewesleycommunity.org

Facility Website: www.thewesleycommunity.org/senior-living-options/independentliving/embury-apartments

Sponsor: United Methodist Health and Housing

Programs Offered:

Subsidized Housing Units: 192

**Schuyler Ridge/The Eddy/
St. Peter's Health Partners**

One Abele Boulevard

Clifton Park, NY 12065-2951

Tel: 518-371-1400 / Fax: 518-371-1240

Corporate Website: www.sphp.com

Facility Website: www.sphp.com/location/schuyler-ridge-residential-healthcare

Sponsor: The Eddy/St. Peter's Health Partners

Programs Offered:

Nursing Facility Beds: 120

Subacute Rehab

SARATOGA

Shenendehowa Village

300 Solomon Avenue
Clifton Park, NY 12065-3703
Tel: 518-373-1900 / Fax: 518-373-1998

Facility Website:
www.nationalchurchresidences.org

Sponsor: National Church Residences

Programs Offered:

Subsidized Housing Units: 49

VanSchoonhoven Square

One VanSchoonhoven Square
Waterford, NY 12188-2054
Tel: 518-235-0514 / Fax: 518-237-8925

Facility Website:
www.nationalchurchresidences.org

Sponsor: National Church Residences

Programs Offered:

Subsidized Housing Units: 40

The Wesley Community

131 Lawrence Street
Saratoga Springs, NY 12866-1399
Tel: 518-587-3600 / Fax: 518-581-8266

Facility Website: www.thewesleycommunity.org

Sponsor: United Methodist Health & Housing, Inc.

Programs Offered:

Nursing Facility Beds: 342
Wesley Outpatient Therapies
Short-Term Rehabilitation
Assisted & Independent Living

Woodlawn Commons

156 Lawrence Street
Saratoga Springs, NY 12866-1338
Tel: 518-691-1560 / Fax: 518-587-1773

Corporate Website:
www.thewesleycommunity.org

Facility Website: www.thewesleycommunity.org/senior-living-options/independent-living/woodlawn-commons

Sponsor: United Methodist Health and Housing

Programs Offered:

Enriched Housing Beds: 42
Market Rate Housing Units: 60

SCHENECTADY

Baptist Health Nursing and Rehabilitation Center

297 North Ballston Avenue
Scotia, NY 12302-2427

Tel: 518-370-4700 / Fax: 518-370-4147

Facility Website: www.bapthealth.com

Programs Offered:

Nursing Facility Beds: 262
Post Acute Hospitalization
Rehab Program
Music & Memories Certified Provider
Dreams Can Come True Program
Outpatient Rehabilitation
Bariatric Subacute Rehabilitation
Long Term Care and Memory Care
Respiratory Therapy

Fr. Leo O'Brien Senior Community

3151 Marra Lane
Schenectady, NY 12303-4647
Tel: 518-357-4424 / Fax: 518-357-9377
Facility Website: www.depaulhousing.com
Sponsor: Roman Catholic Diocese of Albany

Programs Offered:

Subsidized Housing Units: 49

Glen Eddy

One Glen Eddy Drive
Niskayuna, NY 12309-4965
Tel: 518-280-8000 / Fax: 518-280-8395

Corporate Website: www.sphp.com

Facility Website: www.gleneddy.com

Sponsor: The Eddy/St. Peter's Health Partners

Programs Offered:

Enriched Housing Beds: 42
Market Rate Housing Units: 98
Dining
Transportation
Beauty Salon/Barber Shop
Health & Recreation
Respite
Wellness Program

SCHENECTADY**Glendale Home**

59 Hetcheltown Road
Scotia, NY 12302-5506

Tel: 518-384-3600 / Fax: 518-384-1615

Facility Website:

www.schenectadycounty.com/glendale

Sponsor: Schenectady County

Programs Offered:

Nursing Facility Beds: 200

Judson Meadows**Assisted Living Community**

39 Swaggertown Road
Glenville, NY 12302

Tel: 518-831-2400 / Fax: 518-831-2405

Corporate Website: www.bapthealth.com

Facility Website:

www.judsonmeadowsassistedliving.com

Programs Offered:

Assisted Living Program (ALP) Beds: 10

Assisted Living Residence (ALR) Beds: 52

Mont Pleasant Commons

1502 Chrysler Avenue
Schenectady, NY 12303-1853

Tel: 518-382-1848 / Fax: 518-382-1942

Facility Website: www.cdymca.org/locations/montpleasant.aspx

Programs Offered:

Subsidized Housing Units: 50

SCHUYLER**Schuyler Hospital – Seneca View
Skilled Nursing Facility**

220 Steuben Street
Montour Falls, NY 14865

Tel: 607-535-8611 / Fax: 607-535-2433

Facility Website: www.schuylerhospital.org

Programs Offered:

Nursing Facility Beds: 120

SENECA**Huntington Living Center**

369 East Main Street
Waterloo, NY 13165-1654

Tel: 315-787-4920 / Fax: 315-787-4980

Corporate Website: www.flhealth.org

Facility Website: www.flhealth.org/hlc

Sponsor: Not-for-Profit

Programs Offered:

Nursing Facility Beds: 160

ST. LAWRENCE

St. Joseph's Home

950 Linden Street
Ogdensburg, NY 13669-3317
Tel: 315-393-3780 / Fax: 315-393-3847
Facility Website: www.stjh.org
Sponsor: Catholic

Programs Offered:

Nursing Facility Beds: 82
2 Respite Beds
Social Adult Day Care

United Helpers Independent Senior Living

30 Sullivan Drive
Canton, NY 13617-2301
Tel: 315-379-1428 / Fax: 315-379-9897
Facility Website: www.unitedhelpers.org
Sponsor: United Helpers

Programs Offered:

Market Rate Housing Units: 38

United Helpers Rehabilitation & Senior Care – Canton

205 State Street Road
Canton, NY 13617-1297
Tel: 315-386-4541 / Fax: 315-386-2131
Corporate Website: www.unitedhelpers.org
Facility Website: [www.unitedhelpers.org/service/
maplewood-health-care-andrehabilitation-
center-0](http://www.unitedhelpers.org/service/maplewood-health-care-andrehabilitation-center-0)

Programs Offered:

Nursing Facility Beds: 96
Assisted Living Program (ALP) Beds: 48

STEUBEN

Clyde F. Simon Lakeview I

105 Geneva Street
Bath, NY 14810-9413
Tel: 607-776-4139 / Fax: 607-776-1078
Facility Website: www.ehdoc.org
Sponsor: Private Corporation

Programs Offered:

Subsidized Housing Units: 151

Clyde F. Simon Lakeview II

105 Geneva Street
Bath, NY 14810
Tel: 607-776-4139 / Fax: 607-776-1078
Facility Website: www.ehdoc.org

Programs Offered:

Subsidized Housing Units: 40

SUFFOLK

Dominican Village

565 Albany Avenue
Amityville, NY 11701
Tel: 631-842-6091 / Fax: 631-842-6131
Facility Website: www.dominicanvillage.org
Sponsor: Sisters of St. Dominic

Programs Offered:

Enriched Housing Beds: 66

Fountaingate Gardens

32 Hauppauge Road
Commack, NY 11725
Tel: 631-715-2693
Corporate Website: www.gurwin.org
Facility Website: www.fountaingateli.org

Programs Offered:

CCRC Including:
Market Rate Housing

Good Samaritan Nursing & Rehabilitation Care Center

101 Elm Street
Sayville, NY 11782-3193
Tel: 631-244-2400 / Fax: 631-244-2405
Corporate Website: www.chsli.org
Facility Website:
<http://goodsamaritannursinghome.chsli.org>

Programs Offered:

Nursing Facility Beds: 100

SUFFOLK**Gurwin Jewish Nursing & Rehabilitation Center**

68 Hauppauge Road

Commack, NY 11725-4403

Tel: 631-715-2000 / Fax: 631-715-2908

Facility Website: www.gurwin.org

Sponsor: UJA-Federation of New York

Programs Offered:*Nursing Facility Beds: 460**Licensed Home Care Services Agency (LHCSA)**Certified Home Health Agency (CHHA)**On-site Dialysis**Ventilator Dependent Care**Sub-Acute Rehabilitation**Memory Care Unit**Advanced Care Unit**Social Adult Day Care**Adult Day Health Care***Island Nursing & Rehab Center**

5537 Expressway Drive North

Holtsville, NY 11742-0131

Tel: 631-758-3336 / Fax: 631-363-0800

Facility Website: www.islandnursing.org**Programs Offered:***Nursing Facility Beds: 120**Physical, Occupational and**Speech Therapies**Long Term Care**Subacute Care**IV Therapy**Ostomy Care**Hospice**Short-Term Rehabilitation**Wound Care**Dialysis (Out-patient)**Pain Management**Respite Care**Total Parenteral Nutrition (TPN)**Life Vest**Lasix IV Piggy Back***SUFFOLK****Jefferson's Ferry**

1 Jefferson's Ferry Drive

South Setauket, NY 11720-4708

Tel: 631-650-2600 / Fax: 631-650-2620

Facility Website: www.jeffersonsferry.org**Programs Offered:***CCRC including:**Nursing Facility Beds: 60**Assisted Living Residence (ALR) Beds: 61**Enhanced Assisted Living Residence**(EALR) Beds: 61**Special Needs Assisted Living Residence**(SNALR) Beds: 20**Market Rate Housing Units: 308***Long Island State Veterans Home at Stony Brook University**

100 Patriots Road

Stony Brook, NY 11790-3300

Tel: 631-444-8500 / Fax: 631-444-8575

Facility Website: www.listateveteranshome.org

Sponsor: Stony Brook University

Programs Offered:*Nursing Facility Beds: 350**Adult Day Health Care: 40 Slots***Our Lady of Consolation**

111 Beach Drive

West Islip, NY 11795-4929

Tel: 631-587-1600 / Fax: 631-587-5960

Corporate Website: www.chsli.orgFacility Website: <http://olc.chsli.org>

Sponsor: Catholic Health

Programs Offered:*Nursing Facility Beds: 345**Geriatric Care**Respiratory Care**Rehabilitative Care**Specialized Dementia Disease Care*

SUFFOLK**Peconic Landing**

1500 Brecknock Road
Greenport, NY 11944-3116

Tel: 631-477-3800 / Fax: 631-477-3900

Facility Website: www.peconiclanding.org

Programs Offered:

CCRC including:

Nursing Facility Beds: 60

Assisted Living Residence (ALR) Beds: 26

Enhanced Assisted Living Residence

(EALR) Beds: 20

Including 3 Respite Beds

Special Needs Assisted Living Residence

(SNALR) Beds: 16

Market Rate Housing Units: 296

Equity-based Program

Lifecare Retirement Community

including 185 Apartments, and 111 Cottages

Rehabilitation Services: 17 Beds

Wellness Clinic

St. Catherine of Siena Nursing and Rehabilitation Center

52 Route 25A
Smithtown, NY 11787-1346

Tel: 631-862-3900 / Fax: 631-862-3906

Corporate Website: www.chsli.org

Facility Website:

www.stcatherinenursingandrehab.chsli.org

Programs Offered:

Nursing Facility Beds: 240

Speech Therapy

Short-Term Rehabilitation

Physical, Occupational and

Intravenous Therapy

Special Wound Care

Pet Therapy

Intergenerational Programs

Programs for the Memory Impaired

Sensory Stimulation Programs

SUFFOLK**St. Johnland Assisted Living**

395 Sunken Meadow Road
Kings Park, NY 11754-1099

Tel: 631-663-4444 / Fax: 631-663-4454

Facility Website: www.stjohnland.org

Sponsor: Community based not for profit

Programs Offered:

Adult Home Beds: 100

Assisted Living Program (ALP) Beds: 100

St. Johnland Nursing Center, Inc.

395 Sunken Meadow Road
Kings Park, NY 11754-1099

Tel: 631-269-5800 / Fax: 631-269-5876

Facility Website: www.stjohnland.org

Sponsor: Community based not for profit

Programs Offered:

Nursing Facility Beds: 250

Social Adult Day Care

Traumatic Brain Injury Unit-20 Beds

Alzheimer's/Dementia Unit-50 Beds

Specialized Units: Subacute Unit-24 Beds

SULLIVAN**The Care Center at Sunset Lake**

256 Sunset Lake Road
Liberty, NY 12754-0671

Tel: 845-292-8640 / Fax: 845-513-2177

Facility Website: www.co.sullivan.ny.us/Departments/HealthandFamilyServices/AdultCareCenter/tabid/3122/default

Sponsor: Sullivan County

Programs Offered:

Nursing Facility Beds: 146

Adult Day Health Care

TOMPKINS**Groton Community
Health Care Center, Inc.**

120 Sykes Street

Groton, NY 13073-1231

Tel: 607-898-5876 / Fax: 607-898-3034

Facility Website: www.grotonhealth.org**Programs Offered:***Nursing Facility Beds: 80***Kendal at Ithaca**

2230 North Triphammer Road

Ithaca, NY 14850-6513

Tel: 607-266-5300 / Fax: 607-266-5353

Facility Website: www.kai.kendal.org

Sponsor: NYS Nonprofit Corporation

Programs Offered:*CCRC including:**Nursing Facility Beds: 48**Enhanced Assisted Living Residence**(EALR) Beds: 36**Market Rate Housing Units: 236**Long Term (Nursing Home) Admissions**Short Term Rehab***ULSTER****Woodland Pond at New Paltz CCRC**

100 Woodland Pond Circle

New Paltz, NY 12561

Tel: 845-256-5600 / Fax: 845-256-5777

Facility Website: www.wpatnp.org

Sponsor: Free Standing

Programs Offered:*CCRC including:**Skilled Nursing Facility Beds: 40**Enriched Housing Beds: 60 (Consisting of the
breakdown below)**Assisted Living Residence (ALR) Beds: 40**Special Needs Assisted Living Residence**(SNALR) Beds (Memory Care): 20**Independent Living / Market Rate Housing Units: 207**Social and Recreation Programs**Nutritious Gourmet Meals**Licensed Nursing Staff Activities**Staff Scheduled Local Transportation**Spacious Apartment Homes & Cottages**Wellness Program**Lifecare Coverage**Beauty Salon/Barber Shop**Indoor heated pool and Fitness Center**Woodshop**Arts & Crafts Studio**Performing Arts Center**Communal Garden**Wound care IV Therapy**Music and Art Therapy**Pet Therapy**Walking Trails and Biking Paths**Lifetime Learning**Monthly bus trips to various events**Wellness Registered Nurse**Primary Care*

WARREN

The Glen at Hiland Meadows, Inc.

39 Longview Drive
Queensbury, NY 12804

Tel: 518-832-7800 / Fax: 518-832-7895

Corporate Website: www.sphp.com

Facility Website: www.glenhiland.com

Sponsor: The Conkling Center and The Eddy

Programs Offered:

Enriched Housing Beds: 42

Market Rate Housing Units: 92

Skenesborough Harbor

8 Elizabeth Street
Whitehall, NY 12887-1546

Tel: 518-499-1498 / Fax: 518-499-2519

Facility Website:

www.nationalchurchresidences.org

Sponsor: National Church Residences

Programs Offered:

Subsidized Housing Units: 40

*24 Hour Monitored Emergency Call
System and Fire Alarm System*

Gross Annual Income

Transportation

Service Coordinator

In-house Management

In-house Maintenance

Affordable Rents – 30%

Security System

Solomon Heights

18 Farr Lane East
Queensbury, NY 12804-1986

Tel: 518-743-1300 / Fax: 518-743-1451

Facility Website:

www.nationalchurchresidences.org

Sponsor: National Church Residences

Programs Offered:

Subsidized Housing Units: 40

Email: 0141@NCR.org

WASHINGTON

Fort Hudson Homecare, Inc.

319 Broadway
Fort Edward, NY 12828

Tel: 518-747-9019 / Fax: 518-681-3071

Facility Website: www.forthudson.com

Sponsor: Fort Hudson Health System, Inc.

Programs Offered:

Licensed Home Care Services Agency (LHCSA)

Social Adult Day Care

Care Management

Mountainview Commons

88 Quaker Street
Granville, NY 12832-1540

Tel: 518-642-2418 / Fax: 518-642-2903

Facility Website:

www.nationalchurchresidences.org

Sponsor: National Church Residences

Programs Offered:

Subsidized Housing Units: 40

Transportation

Service Coordinator

In-house Management

In-house Maintenance

Security System

Emergency Call System

Meals Program

Activities

0103@ncr.org

The Oaks at Fort Hudson

325 Broadway
Fort Edward, NY 12828-1236

Tel: 518-747-2811 / Fax: 518-747-2740

Facility Website: www.forthudson.com

Sponsor: Fort Hudson Health System Inc.

Programs Offered:

Market Rate Housing Units: 62

WAYNE**DeMay Living Center**

100 Sunset Drive
Newark, NY 14513-1068

Tel: 315-332-2700 / Fax: 315-332-2702

Corporate Website: www.rochesterregional.org

Facility Website: www.rochesterregional.org/services/seniors/skilled-nursing/demay-living-center

Sponsor: Rochester Regional Health

Programs Offered:

Nursing Facility Beds: 180

Adult Day Health Care

Lyons Manor  

31 Pearl Street
Lyons, NY 14489-1136

Tel: 315-946-4013 / Fax: 315-946-1087

Facility Website:

www.nationalchurchresidences.org

Sponsor: National Church Residences

Programs Offered:

Subsidized Housing Units: 38

Wayne County Nursing Home & Rehab Center

1529 Nye Road
Lyons, NY 14489-9106

Tel: 315-946-5673 / Fax: 315-946-5671

Facility Website:

www.waynecountynursinghome.org

Sponsor: Wayne County

Programs Offered:

Nursing Facility Beds: 192

WESTCHESTER**Andrus on Hudson**

185 Old Broadway
Hastings-on-Hudson, NY 10706-3801

Tel: 914-478-3700 / Fax: 914-478-3541

Facility Website: www.andrusonhudson.org

Sponsor: Non-profit

Programs Offered:

Nursing Facility Beds: 197

Hospice

Dementia Unit

Subacute Care (Short Term Rehab)

Long Term Care

Respite

Bethel Nursing Home

17 Narragansett Avenue
Ossining, NY 10562-2899

Tel: 914-941-7300 / Fax: 914-941-4281

Facility Website: www.bethelwell.org

Programs Offered:

Nursing Facility Beds: 43

Certified Home Health Agency (CHHA)

Hospice:

Respite Care

Home Care

Adult Day Health Care

Bethel Springvale Inn

62 Springvale Road
Croton-on-Hudson, NY 10520-1105

Tel: 914-739-4404 / Fax: 914-739-5011

Facility Website: www.bethelwell.org

Sponsor: Voluntary, Not-for-Profit

Programs Offered:

Enriched Housing Beds: 125

Licensed Home Care Services Agency (LHCSA)

WESTCHESTER

Broadview at Purchase College

100 Broadview Avenue
Purchase, NY 10577
Tel: 914-996-9100 Ext. 1000
Fax: 914-918-0099
Facility Website: www.broadviewseniorliving.org

Programs Offered:

*Market Rate Housing: 176 Units
(46 Villas & 130 Apartments)
Below Market Rate: (44 Apartments)
Assisted Living Residence: 36 Beds
Memory Care Residence: 32 Beds*

Cabrini of Westchester

115 Broadway
Dobbs Ferry, NY 10522-2835
Tel: 914-693-6800 / Fax: 914-693-1731
Facility Website: www.cabrini-eldercare.org

Sponsor: Missionary Sisters of the Sacred Heart of Jesus

Programs Offered:

*Nursing Facility Beds: 304
Short-Term Scheduled Stay/Respite
Short-Term Rehabilitation
On-Site Dialysis Program*

Elizabeth Seton Children's Center

300 Corporate Boulevard South
Yonkers, NY 10701-6862
Tel: 914-294-6300 / Fax: 914-294-6305
Facility Website: www.setonchildrens.org
Sponsor: Sisters of Charity

Programs Offered:

*Nursing Facility Beds: 169
Pediatric Vent
Pediatric Long-Term Care
Pediatrics Rehab*

WESTCHESTER

Kendal on Hudson

1010 Kendal Way
Sleepy Hollow, NY 10591-1054
Tel: 914-922-1000 / Fax: 914-922-1150
Facility Website: www.kohud.kendal.org
Sponsor: Independent Not-for-Profit

Programs Offered:

*CCRC including:
Nursing Facility Beds: 26
Enriched Housing Beds: 47
Assisted Living Residence (ALR) Beds: 47
Enhanced Assisted Living Residence (EALR) Beds: 47
Special Needs Assisted Living Residence (SNALR) Beds: 13
Market Rate Housing Units: 222*

The Knolls A Bethel Community

51 Grasslands Road
Valhalla, NY 10595-1655
Tel: 914-461-4500 / Fax: 914-989-7818
Corporate Website: www.bethelwell.org
Facility Website: www.theknolls.org
Sponsor: The Bethel Methodist Home

Programs Offered:

*Nursing Facility Beds: 20
Enriched Housing Beds: 12
Market Rate Housing Units: 120*

Montefiore/Schaffer Extended Care Center

16 Guion Place
New Rochelle, NY 10801-5503
Tel: 914-365-3800 / Fax: 914-365-5235
Facility Website: www.montefiorehealthsystem.org/schaffer
Sponsor: Montefiore Health System

Programs Offered:

*Nursing Facility Beds: 150
Adult Day Health Care
TPN/PPN
Pain Management
Tracheostomy Care
Hemodialysis
IV Therapy
Palliative Care
Wound Care
Cardio/Pulmonary Rehab
Ortho Rehab
Transitional Care*

WESTCHESTER**New York State Veterans Home
at Montrose**

2090 Albany Post Road

Montrose, NY 10548-1454

Tel: 914-788-6000 / Fax: 914-788-6100

Facility Website: www.nysvets.org**Programs Offered:***Nursing Facility Beds: 252***The Osborn**

101 Theall Road

Rye, NY 10580-1406

Tel: 914-925-8200 / Fax: 914-967-4555

Facility Website: www.theosborn.org**Programs Offered:***Nursing Facility Beds: 84**Enriched Housing Beds: 90**Assisted Living Residence (ALR) Beds: 103**Enhanced Assisted Living Residence**(EALR) Beds: 90**Special Needs Assisted Living Residence**(SNALR) Beds: 13**Market Rate Housing Units: 200**Licensed Home Care Services Agency (LHCSA)**CCAC Accredited Retirement Community**Outpatient Rehabilitation**Long Term Care**Short-Term Rehabilitation**Respite Care**Memory Care***St. Michael's Home**

3 Lehman Terrace

Yonkers, NY 10705-3630

Tel: 914-476-3374 / Fax: 914-476-1744

Facility Website: www.stmichaelshome.org

Sponsor: Greek Orthodox Archdiocese of America

Programs Offered:*Adult Home Beds: 60**Non-licensed Assisted Living**Bi-lingual – Greek and English Available**Respite Care***WESTCHESTER****United Hebrew of New Rochelle**

391 Pelham Road

New Rochelle, NY 10805-2307

Tel: 914-632-2804 / Fax: 914-632-8663

Facility Website: www.uhgc.org

Sponsor: Not-for-Profit

Programs Offered:*Nursing Facility Beds: 296**Including 2 Respite Beds***Wartburg**

Wartburg Place

Mount Vernon, NY 10552-3810

Tel: 914-699-0800 / Fax: 914-699-2158

Facility Website: www.wartburg.org

Sponsor: Lutheran

Programs Offered:*Nursing Facility Beds: 50**Including Respite & Hospice Care**Assisted Living Residence (ALR) Beds: 103**Enhanced Assisted Living Residence**(EALR) Beds: 15**Special Needs Assisted Living Residence**(SNALR) Beds: 15**Memory Care Assisted Living Residence**(ALR) Beds: 64**Market Rate Housing Units: 31**Affordable Housing Units: 62**Sub-Acute Rehabilitation Program**Alzheimer's Care Program**Social Adult Day Care**Medical Adult Day Program*

WYOMING

Crestview Terrace  

32 Salina Street Ext.

Warsaw, NY 14569-9358

Tel: 585-786-8684 / Fax: 585-786-8334

Facility Website:

www.nationalchurchresidences.org

Sponsor: National Church Residences

Programs Offered:*Subsidized Housing Units: 35***Wyoming County****Community Hospital/SNF**

400 North Main Street

Warsaw, NY 14569-1097

Tel: 585-786-8940 / Fax: 585-786-1226

Facility Website: www.wcchs.net**Programs Offered:***Nursing Facility Beds: 138**Adult Day Health Care**Short-Term Rehabilitation*

YATES

Clinton Crest Manor

411 Clinton Street

Penn Yan, NY 14527-1381

Tel: 315-536-8800 / Fax: 315-531-9088

Facility Website: www.clintoncrestmanor.com

Sponsor: Harpending Housing, Inc.

Programs Offered:*Adult Home Beds: 42***The Homestead at Soldiers and Sailors Memorial Hospital**

418 North Main Street

Penn Yan, NY 14527-1070

Tel: 315-531-2730 / Fax: 315-531-2727

Corporate Website: www.flhealth.org

Facility Website:

www.flhealth.org/body.cfm?id=318

Sponsor: Soldiers and Sailors Memorial Hospital

Programs Offered:*Nursing Facility Beds: 150**Adult Day Health Care**Neurobehavioral: 20 Beds**Short-Term Care: 1 Bed***Penn Yan Manor Nursing Home, Inc.**

655 North Liberty Street

Penn Yan, NY 14527-1048

Tel: 315-536-2311 / Fax: 315-536-1033

Facility Website: www.pennyanmanor.com

Sponsor: Voluntary-NP

Programs Offered:*Nursing Facility Beds: 46*

LeadingAge®
New York

Career Center

Connecting Talent and Opportunity

www.careercenter.leadingageny.org

**A Lot of
Reach for a
Low Price**

**Push to job boards such as Indeed,
SimplyHired & Others**

- Free to job seekers
 - Pre-screen filters
 - Email alerts for job matches
 - Intuitive search and job matching
-

Contact Earl Gifford
at egifford@leadingageny.org or 518-867-8833

Senior Living. *Exceptional Life.*

Watch our virtual tours



*Northern New York's
Largest Senior Living Provider in
Watertown, NY*

315-782-7033
samaritanhealth.com/LTC

PACE = Program of All-Inclusive Care for the Elderly
MLTC = Managed Long-Term Care

ArchCare Senior Life

1432 Fifth Avenue
 New York, NY 10035
 Tel: 866-263-9083

900 Intervale Avenue
 Bronx, NY 10459

Main: 718-732-7171

88 Old Town Road
 Staten Island, NY 10304

Main: 718-407-2916

115 Broadway
 Dobbs Ferry, NY 10522

Main: 914-326-3199

Corporate Website: www.archcare.org

Facility Website: www.archcareseniorlife.org

Programs Offered:

PACE Program

Counties Served:

Bronx/New York (Manhattan)/Richmond/
 Westchester

ElderONE

490 East Ridge Road
 Rochester, NY 14621

Tel: 585-922-2831

Corporate Website: www.rochesterregional.org

Facility Website: www.rochesterregional.org/centers-and-services/senior-services/elderone

Sponsor: Rochester Regional Health

Programs Offered:

PACE Program

Counties Served:

Monroe/Ontario/Wayne

Elderplan/Homefirst

745 64th Street
 Brooklyn, NY 11220

Tel: 718-921-7990

Corporate Website: www.mjhs.org

Facility Website: www.elderplan.org

Sponsor: MJHS

(Metropolitan Jewish Health System)

Programs Offered:

Managed Long Term Care

County Served

Kings (Brooklyn)

**ElderServe Health, Inc.
 dba RiverSpring Health Plans**

80 West 225th Street
 Bronx, NY 10463

Tel: 800-370-3600

Corporate Website: www.riverspringliving.org

Facility Website:

www.riverspringliving.org/managed-care/

Programs Offered:

Managed Long Term Care

Counties Served:

Bronx/Manhattan/Westchester/Queens/Kings/
 Richmond/Nassau/Suffolk

ISNP and MAP Counties Served

Bronx/Manhattan/Westchester/Queens/Kings/
 Richmond/Nassau

Mercy Nursing Facility at OLV

55 Melroy Avenue
 Lackawanna, NY 14218

Tel: 716-819-5300 / Fax: 716-819-5299

Corporate Website: www.chsbuffalo.org

Facility Website: www.chsbuffalo.org/olv

Sponsor: Catholic Health

Programs Offered:

PACE Program

County Served:

Erie

Nascentia Health Options

1050 West Genesee Street

Syracuse, NY 13204

Tel: 888477HOME / Fax: 315-477-9590

Corporate Website: www.nascentiahealth.org

Facility Website:

www.nascentiahealthoptions.org**Programs Offered:***Managed Long Term Care***Counties Served**

Albany/Allegany/Broome/Cattaraugus/Cayuga/

Chautauqua/Chemung/Chenango/Clinton/

Columbia/Cortland/Delaware/Erie/Essex/

Franklin/Fulton/Genesee/Greene/Hamilton/

Herkimer/Jefferson/Lewis/Livingston/Madison/

Monroe/Montgomery/Niagara/Oneida/

Onondaga/Ontario/Orleans/Oswego/Otsego/

Rensselaer/Saratoga/Schenectady/Schoharie/

Schuyler/Seneca/St. Lawrence/Steuben/

Tioga/Tompkins/Warren/Washington/Wayne/

Wyoming/Yates

PACE CNY

100 Malta Lane

North Syracuse, NY 13212-2375

Tel: 315-452-5800 / Fax: 315-452-5739

Corporate Website: www.loretto-cny.orgFacility Website: www.pacecny.org**Programs Offered:***Managed Long Term Care**PACE Program***County Served:**

Onondaga

Your Time. Your Health. Your Independence.



Queens - Long Island
Renal Institute, Inc.

Designed for the Comfort and Convenience of Dialysis Patients

Queens-Long Island Renal Institute, QLIRI, empowers you with kidney care options that keep you in charge:



Custom scheduling to fit your life, work, and family needs



A dedicated ambulance partner to help eliminate delays and stress



Home dialysis options for more flexibility and privacy



Regain time, comfort, and confidence — while receiving expert care every step of the way.

271-11 76th Avenue | New Hyde Park, NY | QLIRI.ORG | 718-289-2600



Located on the Lobby of
Parker Jewish Institute
FOR HEALTH CARE AND REHABILITATION

ALLEGANY

Highland Day Services

Ms. Rachel Johnston,
Adult Day Health Care Director
100 Chamberlain Street
Wellsville, NY 14895
585-593-6020

BRONX

The New Jewish Home and Hospital Life Care ADHCP, Bronx

Ms. Kiasha James, Program Director
1200 Waters Place
Bronx, NY 10461
212-870-5000

Split Rock Adult Day Health Care

Ms. Melissa Caraballo, Program Director
3525 Baychester Avenue
Bronx, NY 10466
718-798-8900

BROOME

Golden Days Adult Day Health Care

Ms. Leslie VanAustin, Program Director
282 Riverside Drive
Johnson City, NY 13790
607-729-9206

CHENANGO

Sherburne ADHC of Crouse Community Center

Ms. Kate Hatton, Director of ADHC
38 West State Street
Sherburne, NY 13460
607-234-4051

CLINTON

Plattsburgh Rehabilitation and Nursing Center and Plattsburgh Adult Day Health Center

Ms. Pattie Kinsman, Program Director
8 Bushey Boulevard
Plattsburgh, NY 12901
518-563-3261

CORTLAND

Cortland Regional Nursing and Rehabilitation Center's Adult Day Health Care

Ms. Jackie Tier, Program Director
134 Homer Avenue
Cortland, NY 13045
607-756-3918

DUTCHESS

Grand at River Valley ADHC

Ms. Stephanie Torres, Program Director
140 Main Street
Poughkeepsie, NY 12601
845-454-7600

Meadows ADHC Program

Mr. Brian Zeidan, Administrator
44 Brookmeade Drive
Rhinebeck, NY 12572
845-876-2071

ERIE

Schofield ADHC

Ms. Danielle Dolan, Program Director
190 Fulton Street
Buffalo, NY 14204
716-849-8720

HERKIMER

Folts Brook Center Adult Day Care Program

Ms. Megan Wells, Program Director
104 North Washington Street
Herkimer, NY 13350
315-866-6964

Grand at Mohawk Valley ADHC

Ms. Kathy Fleming, Program Director
99 Sixth Avenue
Ilion, NY 13357
315-895-4050

Valley Health Services ADHC, Little Falls

Ms. Kana Brelinsky, ADHC Coordinator
140 Burwell Street
Little Falls, NY 13365
315-823-2080

KINGS

Bainbridge Adult Day Health Care Center

Ms. Yelena Palatnik, Program Director
3093 Ocean Avenue
Brooklyn, NY 11235
718-891-2345

Bushwick Center ADHC

Ms. Sara Alcabes, Program Director
50 Sheffield Avenue
Brooklyn, NY 11207
718-342-4210

Lakeside Adult Day Health Care Center

Ms. Christine Carbone, Program Director
945 East 108th Street
Brooklyn, NY 11236
718-688-8800

Palm Gardens A.D.H.C. at Palm Beach

Ms. Yana Guzelevich, Program Director
2900 Bragg Street
Brooklyn, NY 11235
718-615-9500

Sunrise Adult Day Health Care Center

Ms. Josephine Tramontana, Program Director
9517 Avenue J
Brooklyn, NY 11236
718-688-8704

LIVINGSTON

Livingston County Garden of Life ADHC

Ms. Rebecca Sica, Program Manager
11 Murray Hill Drive
Mt. Morris, NY 14510
585-243-7200

MADISON

Crouse Community Center Inc. – Adult Day Services (Morrisville Site)

Ms. Kate Hatton, Director of ADHC
1035 Community Way
Morrisville, NY 13408
315-824-6230

MONROE

DayTimers ADHC

Ms. LaTasha Dunbar,
Adult Day Health Care Director
2021 Winton Road South
Rochester, NY 14618
585-784-6575

St. Ann's Adult Day Services at Durand

Ms. Rola O'Meally,
Director of Adult Day and Dementia Services
4250 Culver Road
Rochester, NY 14622
585-697-6365

St. Ann's Home Connection Adult Day Health Care

Ms. Rola O'Meally, Director of Adult Day and
Dementia Services
1500 Portland Avenue
Rochester, NY 14621
585-697-6365

MONTGOMERY

Wilkinson Adult Day Health Center

Ms. Michelle Santabarbara, Program Director
4988 State Highway 30
Amsterdam, NY 12010
518-841-3605

NASSAU

Highfield Gardens ADHC Program

Ms. Yuliya Takhalova, Program Director
199 Community Drive
Great Neck, NY 11021
516-303-0100

NEW YORK

Fort Tryon Adult Day Care Center

Ms. Vicky Ehrman, Program Director
1916 Park Avenue Suite 102
New York, NY 10037
212-588-8987

New Jewish Home Adult Day Program

Ms. Sharae Solomon, Program Director
120-140 West 106th Street
New York, NY 10025
212-870-5090

ONEIDA

Adult Day Health Care at Presbyterian Home for CNY, Inc.

Ms. Michelle Cole,
Vice President of Senior Housing Services
PO Box 1144 / 4290 Middle Settlement Road
New Hartford, NY 13413
315-235-7106

Grand at Rome ADHC

Mr. Thomas Thorngren,
Director of Adult Day Healthcare
801 North James Street
Rome, NY 13440
315-533-1600

Sitrin Adult Day Health Care

Mr. Greg Jones, Program Director
2050 Tilden Avenue
New Hartford, NY 13413
315-797-3114

ONONDAGA

Rothschild Adult Day Health Services

Ms. Kamesha Graves, Director of ADS
4101 East Genesee Street
Syracuse, NY 13214
315-446-9111

OSWEGO

St. Luke Adult Day Health Care

Ms. Veronica Hibbert, Program Director
299 East River Road
Oswego, NY 13126
315-342-3166

QUEENS

DSSM-Neponsit ADHC

Ms. Omayra Gonzalez, Program Director
230 Beach 102nd Street
Rockaway Park, NY 11694
718-634-1400

Elmhurst Adult Day Health Care

Ms. Marissa Panetta, Program Director
100-17 23rd Avenue
E. Elmhurst, NY 11369
718-247-6199

Franklin Adult Day Health Care

Ms. Rose Hellman, Program Director
45-15 162nd Street
Flushing, NY 11358
718-762-4561

St. Mary's Hospital for Children

Ms. Tiffany Damers, Program Director
29-01 216th Street
Bayside, NY 11360
718-281-8859

ROCKLAND

Friedwald at Summit Adult Day Health Center

Mr. Blimy Werner, Clinical Director
50 Sanatorium Road
Pomona, NY 10970
845-243-5000

SUFFOLK

Brookside ADHC (Smithtown)

Ms. Jennifer Duffy Phillip, Program Director
7 Route 25A
Smithtown, NY 11787
631-724-1228

Gurwin Adult Day Health Program

Ms. Jeraldine Fedoriw, Chief Adult Day Officer
68 Hauppauge Road
Commack, NY 11725
631-715-2520

Long Island State Veterans Home Adult Day Health Care

Ms. Jeanmarie Brand, Program Director
100 Patriots Road
Stony Brook, NY 11790
631-444-8530

Maria Regina Residence Adult Day Health Services

Ms. Grace Klein, Program Director
1725 Brentwood Road
Brentwood, NY 11717
631-299-3045

Middle Island Adult Day Health Services East

Ms. Kathleen DiPietro, Program Manager
45 Rocky Point Road
Middle Island, NY 11953
631-924-0700

Middle Island Adult Day Health Services West

Ms. Kathleen DiPietro, Program Manager
575 Clayton Street
Central Islip, NY 11722
631-924-0700

St. Johnland ADHS

Ms. Michael Engrassia, Program Director
395 Sunken Meadow Road
Kings Park, NY 11754
631-663-2474

TIOGA

ElderWood at Waverly Health Care Adult Medical Day Services

Ms. Christine Flint, Program Director
37 North Chemung Street
Waverly, NY 14892
607-565-6321

WASHINGTON

Fort Hudson Adult Day Health Care Program

Ms. Caitlin Johnson, Program Director
319 Broadway
Fort Edward, NY 12828
518-747-2811

WESTCHESTER

Bethel Adult Day Services

Ms. Dorothy Parchment, Program Director
19 Narragansett Avenue
Ossining, NY 10562
914-461-4501

The Knolls Adult Day Program

Ms. Dorothy Parchment, Program Director
51 Grasslands Road
Valhalla, NY 10595
914-681-8696

Wartburg Adult Day Services Program – Mount Vernon

Ms. Alicia James, Program Director
Wartburg Place
Mount Vernon, NY 10552
914-699-0800

ArchCare Inside Front Cover

Catholic Health Facilities Tab (front)

Jefferson's Ferry Page 2

Kendal on Hudson Page 2

Leading Age Career Center page 78

Parker Jewish Institute Inside Back Cover

Peconic Landing Page 3

RiverSpring Living Outside Back Cover

Queens Long Island Renal Institute Adult Day Health Care Tab (front)

Samaritan Keep Home PACE/MLTC Tab (front)

Woodland Pond at New Paltz CCRC Introduction Tab (front)

Young at Heart Page 4



Keep Your Independence

Your Health. Your Culture. Your Parker.

Parker is more than long-term care—we're your partner in health, recovery, and community. Our services include:



Long Term Care with comfort and compassion

Short Term Rehabilitation to foster recovery

Home Health Care with skilled nursing | certified aides

Dialysis in-center and home options

Hospice Care with compassion at home or at Parker

Parker At Your Door for medical house calls for the homebound and specialty programs such as Dementia GUIDE Model

Specialty Units for Indian Cultural Care | Memory Care | Palliative Care

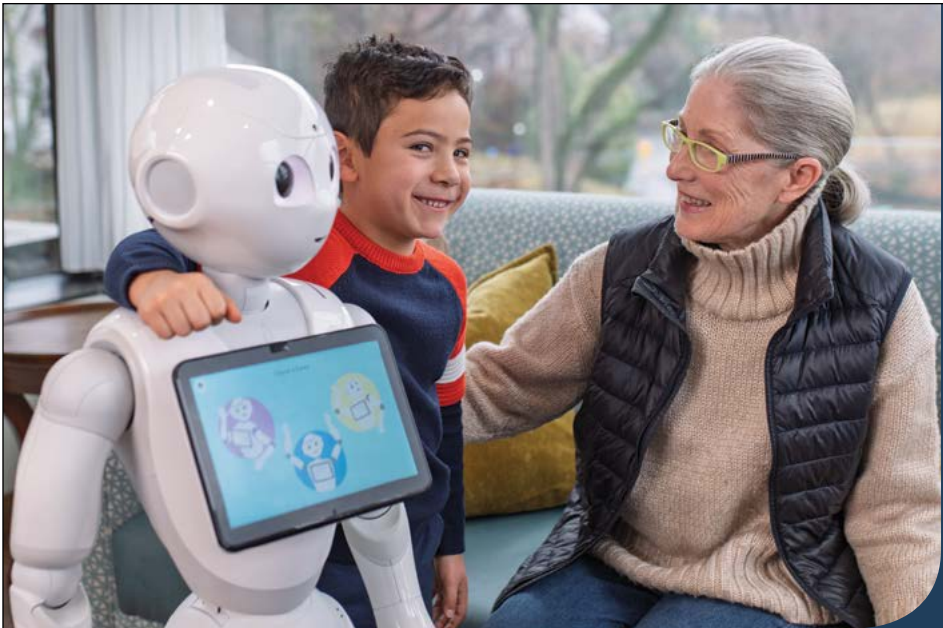
Willing Hearts, Helpful Hands community program dedicated to supporting the family caregivers of people living with Alzheimer's disease and other dementias

We are more than long term care. Parker is total care.



Parker Jewish Institute
FOR HEALTH CARE AND REHABILITATION

271-11 76th Avenue New Hyde Park, NY 11040
877-727-5373 | parkerinstitute.org



Say Hello to Cutting-Edge Innovation. From the Pioneers in Senior Living.

At RiverSpring Living, we combine more than a century of trusted, mission-driven care with the most advanced innovations in senior living. From AI-powered fall prevention and robotic rehabilitation to immersive virtual reality therapies and telehealth monitoring, we're bringing the future of senior care to the people we care for today.

Our continuum of care spans:

- Independent and assisted living
- Memory care
- Skilled nursing
- Supportive housing
- Home care
- Short-term rehabilitation

Experience the RiverSpring Difference.

Learn more at [RiverSpringLiving.org](https://www.RiverSpringLiving.org)
or call **800-56-SENIOR**.

