

# ADULT DAY HEALTH CARE UTILIZATION TREND (July 2012- July 2014)

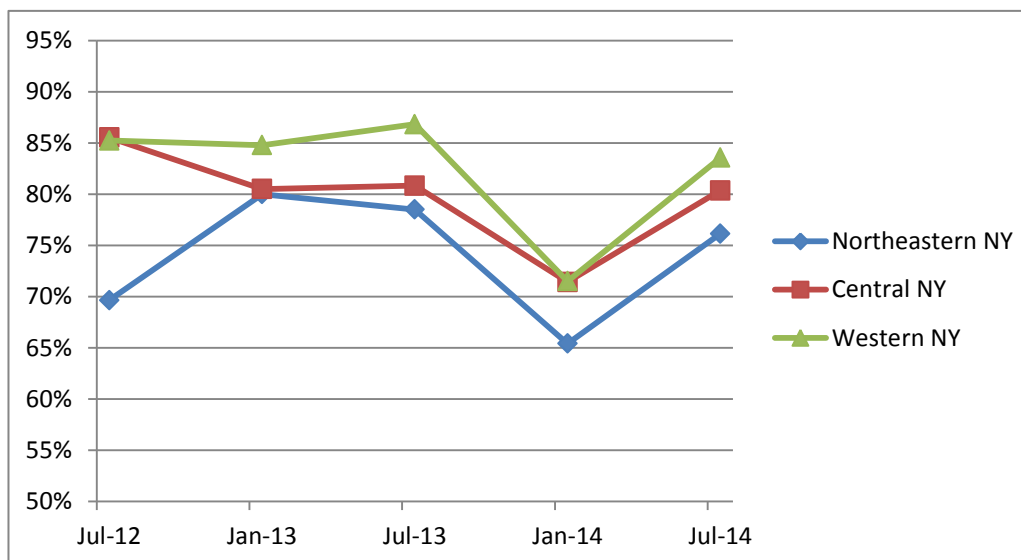
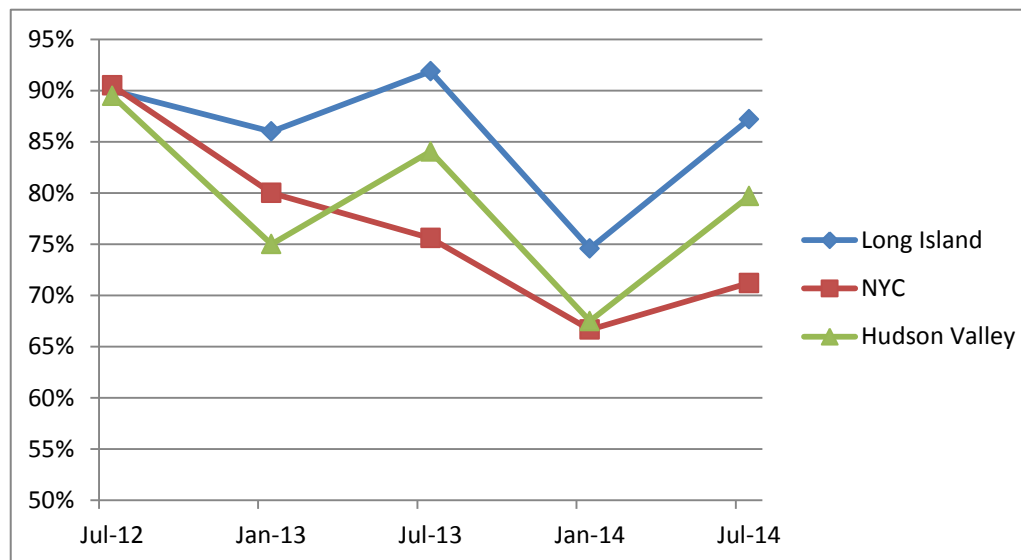
The data in this report comes from weekly slot availability reports Adult Day Health Care (ADHC) programs file with DOH. Monthly figures are averages of all the weekly reports submitted for that month.

Please note that DOH identifies ADHC programs by their sponsoring nursing home. In cases where a nursing home sponsors multiple programs the program figures are combined.

The graphs to the left show median regional occupancy in six month increments. Individual programs are listed by region in tables below. Monthly figures for the last six months are shown in the table to allow analysis of short term trends.

If "na" is indicated in the table, no weekly reports were filed by the program that month. In some cases, though not all, this indicates a program has closed.

Although several programs with outlier figures are excluded to prevent skewing, please keep in mind that these are unaudited, as-reported figures.



## LONG ISLAND

County	Sponsoring NH Name	Jul-14	Jun-14	May-14	Apr-14	Mar-14	Feb-14	Jan-14	Jul-13	Jan-13	Jul-12
SUFFOLK	Avalon Gardens Rehabilitation & Health Care Center, LLC	84%	92%	92%	86%	81%	74%	80%	94%	85%	80%
SUFFOLK	Bellhaven Center for Rehabilitation and Nursing Care	63%	64%	72%	76%	72%	61%	34%	79%	75%	65%
SUFFOLK	Broadlawn Manor Nursing & Rehab Center	100%	100%	100%	100%	100%	93%	75%	100%	96%	100%
SUFFOLK	Carillon Nursing and Rehabilitation Center	75%	73%	83%	87%	85%	90%	85%	89%	90%	90%
NASSAU	Cold Spring Hills Center for Nursing and Rehabilitation	81%	86%	89%	88%	89%	90%	65%	90%	89%	90%
SUFFOLK	Gurwin Jewish Nursing and Rehabilitation Center	100%	100%	100%	100%	100%	100%	100%	100%	100%	100%
NASSAU	Highfield Gardens Care Center of Great Neck	100%	98%	100%	98%	90%	90%	81%	100%	92%	97%
SUFFOLK	Huntington Hills Center for Health and Rehabilitation	87%	92%	94%	81%	87%	91%	99%	90%	73%	76%
SUFFOLK	Long Island State Veterans Home	89%	86%	91%	90%	89%	61%	49%	100%	95%	58%
SUFFOLK	Maria Regina Residence Inc	81%	74%	88%	93%	82%	87%	74%	93%	86%	91%
NASSAU	Nassau Extended Care Facility	94%	96%	na	96%	93%	96%	na	na	82%	100%
NASSAU	Orzac Center for Extended Care & Rehabilitation	100%	100%	100%	100%	100%	96%	91%	43%	84%	97%
NASSAU	Park Avenue Extended Care Facility	44%	41%	47%	46%	41%	48%	49%	58%	45%	92%
SUFFOLK	San Simeon By the Sound Center for Nursing&Rehabilitation	67%	67%	60%	57%	63%	56%	33%	66%	73%	86%
SUFFOLK	St Johnland Nursing Center, Inc	92%	100%	98%	100%	100%	100%	60%	98%	94%	73%
<b>REGIONAL MEDIAN:</b>		<b>87%</b>	<b>92%</b>	<b>92%</b>	<b>90%</b>	<b>89%</b>	<b>90%</b>	<b>75%</b>	<b>92%</b>	<b>86%</b>	<b>90%</b>

## NEW YORK CITY

County	Sponsoring NH Name	Jul-14	Jun-14	May-14	Apr-14	Mar-14	Feb-14	Jan-14	Jul-13	Jan-13	Jul-12
NEW YORK	Amsterdam Nursing Home Corp (1992)	100%	100%	100%	100%	100%	96%	100%	100%	100%	100%
BRONX	Bainbridge Nursing & Rehabilitation Center	na	na	na	90%	na	na	na	na	na	86%
BRONX	Beth Abraham Health Services	na	na	na	na	na	na	na	72%	na	96%
KINGS	Bishop Henry B. Hucles Episcopal Nursing Home	67%	71%	62%	64%	60%	53%	56%	88%	63%	100%
KINGS	Brooklyn United Methodist Church Home	58%	na	na	50%	58%	na	50%	53%	60%	62%
KINGS	Bushwick Center for Rehabilitation and Health Care	na	na	na	na	na	25%	59%	63%	95%	92%
RICHMOND	Carmel Richmond Healthcare and Rehabilitation Center	na	na	na	na	na	na	65%	71%	73%	84%
na	Casa Promesa	43%	43%	45%	36%	35%	24%	29%	52%	48%	73%
KINGS	Center for Nursing & Rehabilitation Inc	na	na	na	na	na	na	na	55%	58%	64%
QUEENS	Chapin Home for the Aging	100%	100%	93%	94%	95%	95%	96%	100%	100%	100%
KINGS	Cobble Hill Health Center, Inc	na	na	na	na	na	na	na	na	na	91%
KINGS	Concord Nursing Home Inc	83%	na	na	na	na	13%	8%	19%	58%	58%
KINGS	Dr Susan Smith McKinney Nursing and Rehabilitation Center	74%	71%	74%	68%	66%	59%	58%	7%	68%	73%
QUEENS	Dry Harbor Nursing Home	71%	59%	76%	74%	80%	75%	84%	84%	83%	99%
<b>County</b>	<b>Sponsoring NH Name</b>	<b>Jul-14</b>	<b>Jun-14</b>	<b>May-14</b>	<b>Apr-14</b>	<b>Mar-14</b>	<b>Feb-14</b>	<b>Jan-14</b>	<b>Jul-13</b>	<b>Jan-13</b>	<b>Jul-12</b>
QUEENS	Elmhurst Care Center, Inc	71%	81%	77%	60%	76%	67%	73%	86%	88%	98%

QUEENS	Fairview Nursing Care Center Inc	93%	91%	54%	93%	87%	90%	75%	92%	96%	100%
QUEENS	Forest View Center for Rehabilitation & Nursing	84%	88%	92%	70%	88%	86%	86%	96%	82%	95%
KINGS	Four Seasons Nursing and Rehabilitation Center	na	na	na	na	na	80%	68%	na	na	94%
QUEENS	Franklin Center for Rehabilitation and Nursing	100%	100%	100%	100%	100%	100%	100%	100%	100%	100%
KINGS	Haym Solomon Home for the Aged	100%	100%	100%	100%	100%	100%	100%	100%	100%	100%
BRONX	Hebrew Home for the Aged at Riverdale	50%	53%	49%	56%	69%	64%	75%	74%	na	na
na	Help/PSI, Inc.	na	83%	72%	74%	na	na	na	81%	88%	na
QUEENS	Hillside Manor Rehab & Extended Care Center	64%	66%	62%	61%	68%	60%	49%	73%	75%	74%
NEW YORK	Isabella Geriatric Center Inc	na	na	na	na	na	80%	68%	99%	74%	85%
BRONX	Jewish Home Lifecare, Harry & Jeanette Weinberg Campus, B	71%	74%	65%	72%	76%	41%	63%	84%	92%	94%
NEW YORK	Jewish Home Lifecare, Manhattan	72%	76%	60%	65%	77%	61%	78%	82%	70%	89%
QUEENS	Margaret Tietz Center for Nursing Care Inc	na	na	na	na	na	na	na	83%	99%	100%
BRONX	Morningside House Nursing Home Company Inc	na	na	na	na	na	na	na	94%	88%	90%
QUEENS	New Surfside Nursing Home, LLC	75%	78%	78%	80%	78%	84%	na	na	68%	100%
KINGS	Palm Gardens Center for Nursing and Rehabilitation	na	na	87%	81%	85%	93%	na	na	na	na
QUEENS	Parker Jewish Institute for Health Care & Rehab	42%	41%	44%	39%	39%	41%	na	40%	46%	60%
BRONX	Providence Rest, Inc.	82%	85%	95%	99%	91%	89%	86%	86%	80%	85%
QUEENS	Queens Boulevard Extended Care Facility	100%	100%	100%	100%	99%	94%	78%	98%	99%	97%
QUEENS	Regal Heights Rehabilitation and Health Care Center	na	78%	72%	87%	87%	78%	79%	59%	82%	83%
QUEENS	Rego Park Nursing Home	61%	64%	63%	59%	61%	59%	60%	48%	78%	87%
RICHMOND	Richmond Center for Rehabilitation and Specialty Healthcare	37%	40%	51%	58%	48%	60%	53%	na	na	na
NEW YORK	Rivington House-The Nicholas A Rango Health Care Facility	36%	33%	28%	32%	38%	26%	47%	64%	23%	58%
KINGS	Rutland Nursing Home Co Inc	46%	51%	52%	49%	52%	43%	38%	49%	51%	45%
KINGS	Schulman and Schachne Institute for Nursing And Rehabilitat	na	na	na	na	66%	48%	32%	na	34%	51%
RICHMOND	Sea View Hospital, Rehabilitation Center and Home	82%	84%	88%	78%	93%	80%	75%	88%	97%	100%
KINGS	Sephardic Nursing & Rehabilitation Center	62%	72%	77%	68%	72%	73%	72%	71%	73%	87%
KINGS	Sheepshead Nursing & Rehabilitation Center	70%	78%	71%	74%	68%	66%	77%	76%	77%	96%
KINGS	Shorefront Jewish Geriatric Center	72%	76%	80%	74%	75%	73%	55%	74%	85%	88%
BRONX	Split Rock Rehabilitation and Health Care Center	50%	56%	53%	51%	53%	63%	54%	55%	85%	98%
BRONX	St Barnabas Rehabilitation & Continuing Care Center	na	na	na	na	83%	83%	67%	67%	100%	100%
na	St Marys Center Inc	100%	100%	100%	91%	91%	82%	66%	100%	87%	91%
na	St Marys Hospital for Children Inc	91%	na	67%	63%	na	na	na	79%	58%	58%
NEW YORK	VillageCare Rehabilitation and Nursing Center	52%	54%	59%	59%	57%	58%	60%	62%	64%	69%
<b>REGIONAL MEDIAN:</b>		<b>71%</b>	<b>76%</b>	<b>72%</b>	<b>71%</b>	<b>76%</b>	<b>70%</b>	<b>67%</b>	<b>76%</b>	<b>80%</b>	<b>91%</b>

# HUDSON VALLEY

County	Sponsoring NH Name	Jul-14	Jun-14	May-14	Apr-14	Mar-14	Feb-14	Jan-14	Jul-13	Jan-13	Jul-12
WESTCHESTER	Bethel Nursing & Rehabilitation Center	65%	64%	75%	70%	71%	53%	48%	75%	75%	75%
SULLIVAN	Catskill Regional Medical Center	99%	99%	94%	97%	78%	69%	74%	89%	72%	100%
ORANGE	Elant at Goshen, Inc.	85%	82%	82%	79%	77%	77%	69%	73%	65%	80%
ORANGE	Elant at Meadow Hill	67%	65%	67%	65%	45%	40%	40%	75%	72%	88%
ROCKLAND	Friedwald Center for Rehabilitation and Nursing, LLC	100%	98%	96%	89%	92%	94%	100%	94%	100%	100%
WESTCHESTER	Hebrew Hospital Home of Westchester Inc	96%	97%	91%	94%	91%	94%	66%	98%	56%	91%
WESTCHESTER	Jewish Home Lifecare, Sarah Neuman Center, Westchester	76%	70%	72%	75%	83%	61%	51%	84%	100%	100%
DUTCHESS	Lutheran Center at Poughkeepsie, Inc	63%	65%	69%	61%	59%	45%	na	na	na	55%
ROCKLAND	Northern Manor Geriatric Center Inc	77%	82%	78%	75%	83%	83%	70%	35%	100%	na
ROCKLAND	Northern Metropolitan Residential Health Care Facility Inc	100%	na	na	97%	na	57%	83%	93%	na	100%
PUTNAM	Putnam Ridge	na	na	na	67%	na	na	na	na	na	21%
DUTCHESS	River Valley Care Center Inc	79%	78%	74%	71%	74%	64%	50%	87%	81%	73%
SULLIVAN	Roscoe Regional Rehabilitation & Residential Health Care Fac	82%	96%	88%	77%	88%	63%	64%	93%	92%	93%
WESTCHESTER	Schaffer Extended Care Center	77%	85%	83%	80%	81%	78%	74%	69%	92%	98%
ORANGE	Schervier Pavilion	91%	94%	95%	86%	84%	66%	60%	77%	53%	54%
WESTCHESTER	St Cabrini Nursing Home	100%	100%	97%	100%	86%	89%	72%	92%	83%	99%
WESTCHESTER	St Josephs Hosp Nursing Home of Yonkers N Y Inc	80%	78%	73%	66%	72%	78%	77%	84%	59%	85%
SULLIVAN	Sullivan County Adult Care Center	71%	71%	74%	82%	84%	56%	66%	62%	88%	100%
ROCKLAND	Summit Park Nursing Care Center	55%	57%	56%	57%	58%	39%	38%	61%	61%	51%
ULSTER	Ten Broeck Commons	100%	100%	95%	98%	87%	83%	87%	96%	75%	100%
WESTCHESTER	The Wartburg Home	47%	53%	52%	44%	54%	54%	na	na	54%	68%
WESTCHESTER	Westchester Meadows	100%	100%	na	na	na	na	na	na	na	na
<b>REGIONAL MEDIAN:</b>		<b>80%</b>	<b>82%</b>	<b>78%</b>	<b>77%</b>	<b>81%</b>	<b>65%</b>	<b>67%</b>	<b>84%</b>	<b>75%</b>	<b>89%</b>

## NORTHEASTERN NEW YORK

County	Sponsoring NH Name	Jul-14	Jun-14	May-14	Apr-14	Mar-14	Feb-14	Jan-14	Jul-13	Jan-13	Jul-12
WARREN	Adirondack Tri-County Nursing and Rehabilitation Center, Inc	70%	80%	30%	30%	70%	70%	70%	80%	80%	80%
OTSEGO	Aurelia Osborn Fox Memorial Hospital	55%	71%	84%	77%	73%	66%	61%	81%	90%	70%
COLUMBIA	Barnwell Nursing & Rehabilitation Center	88%	na	100%	na	na	95%	100%	na	61%	68%
ALBANY	Daughters of Sarah Nursing Center	51%	56%	58%	62%	64%	41%	48%	77%	55%	55%
ALBANY	Eddy Village Green	96%	93%	87%	95%	96%	68%	65%	93%	81%	71%
CLINTON	Evergreen Valley Nursing Home	58%	53%	52%	48%	54%	54%	45%	70%	65%	52%
WASHINGTON	Fort Hudson Nursing Center, Inc.	91%	97%	92%	97%	93%	72%	73%	95%	88%	58%
SARATOGA	Seton Health at Schuyler Ridge Residential Healthcare	64%	67%	68%	65%	60%	67%	58%	56%	57%	47%
WASHINGTON	Washington Center for Rehabilitation and Healthcare	82%	82%	68%	59%	67%	76%	77%	76%	100%	100%
FULTON	Wells Nursing Home Inc	76%	70%	76%	74%	66%	62%	56%	51%	74%	83%
MONTGOMERY	Wilkinson Residential Health Care Facility	100%	100%	na	100%	100%	100%	99%	83%	93%	95%
<b>REGIONAL MEDIAN:</b>		<b>76%</b>	<b>76%</b>	<b>72%</b>	<b>69%</b>	<b>68%</b>	<b>68%</b>	<b>65%</b>	<b>79%</b>	<b>80%</b>	<b>70%</b>

# CENTRAL NEW YORK

County	Sponsoring NH Name	Jul-14	Jun-14	May-14	Apr-14	Mar-14	Feb-14	Jan-14	Jul-13	Jan-13	Jul-12
CAYUGA	Auburn Senior Services, Inc.	na	na	na	0%	0%	na	0%	na	39%	48%
ONONDAGA	Central Park Rehabilitation and Nursing Center	na	80%	na	80%	80%	80%	75%	80%	89%	83%
ONEIDA	Charles T Sitrin Health Care Center Inc	83%	84%	85%	83%	71%	66%	54%	74%	81%	91%
CORTLAND	Cortland Regional Nursing and Rehabilitation Center	96%	96%	97%	93%	89%	90%	74%	89%	98%	99%
MADISON	Crouse Community Center Inc	82%	81%	74%	66%	49%	47%	41%	72%	65%	90%
TIOGA	Elderwood at Waverly	69%	63%	65%	61%	60%	48%	43%	63%	63%	33%
ONEIDA	Focus Rehabilitation and Nursing Center at Utica	80%	74%	63%	73%	72%	76%	81%	82%	59%	74%
HERKIMER	Folts Center for Rehabilitation and Nursing	97%	100%	100%	85%	78%	55%	40%	71%	87%	70%
ONONDAGA	Jewish Home of Central New York	96%	97%	97%	98%	96%	93%	94%	100%	95%	90%
LEWIS	Lewis County General Hospital-Nursing Home Unit	93%	100%	100%	98%	93%	93%	99%	100%	100%	93%
ONONDAGA	Loretto Health and Rehabilitation Center	92%	93%	87%	94%	93%	94%	90%	85%	100%	94%
HERKIMER	Mohawk Valley Health Care Center	74%	75%	71%	78%	72%	71%	57%	71%	58%	86%
ONEIDA	Presbyterian Home for Central New York Inc	65%	76%	65%	66%	63%	57%	58%	61%	75%	75%
ONEIDA	Rome Center for Rehabilitation and Health Care	100%	100%	100%	100%	100%	96%	78%	89%	81%	95%
JEFFERSON	Samaritan Keep Nursing Home Inc	69%	63%	69%	70%	49%	59%	36%	63%	55%	58%
OSWEGO	Seneca Hill Manor Inc	79%	68%	64%	70%	na	87%	89%	88%	77%	100%
ONONDAGA	St Camillus Residential Health Care Facility	80%	79%	79%	78%	77%	58%	71%	88%	94%	99%
OSWEGO	St Luke Residential Health Care Facility Inc	78%	79%	78%	81%	89%	89%	80%	87%	97%	92%
ONEIDA	St Luke's Home	68%	74%	76%	70%	63%	53%	70%	67%	62%	72%
BROOME	Susquehanna Nursing & Rehabilitation Center, LLC	56%	58%	58%	55%	48%	100%	56%	63%	64%	48%
HERKIMER	Valley Health Services Inc	90%	92%	93%	91%	84%	84%	85%	87%	85%	74%
<b>REGIONAL MEDIAN:</b>		<b>80%</b>	<b>80%</b>	<b>78%</b>	<b>78%</b>	<b>75%</b>	<b>78%</b>	<b>71%</b>	<b>81%</b>	<b>81%</b>	<b>86%</b>

## WESTERN NEW YORK

County	Sponsoring NH Name	Jul-14	Jun-14	May-14	Apr-14	Mar-14	Feb-14	Jan-14	Jul-13	Jan-13	Jul-12
MONROE	Edna Tina Wilson Living Center	100%	100%	100%	98%	90%	97%	96%	100%	94%	92%
CHEMUNG	Elcor Nursing and Rehabilitation Center	99%	95%	100%	93%	na	86%	70%	96%	83%	82%
GENESEE	Genesee County Nursing Home	68%	63%	71%	69%	50%	65%	45%	74%	89%	50%
ALLEGANY	Highland Park Rehabilitation and Nursing Center	81%	89%	95%	90%	96%	92%	95%	93%	96%	89%
STEUBEN	Ira Davenport Memorial Hospital SNF/HRF	100%	85%	88%	82%	54%	50%	70%	93%	75%	71%
MONROE	Jewish Home of Rochester	na	na	na	na	na	na	na	na	100%	100%
ONTARIO	Living Center at Geneva - South	73%	70%	72%	73%	63%	58%	67%	75%	70%	70%
LIVINGSTON	Livingston County Center for Nursing and Rehabilitation	78%	80%	69%	68%	54%	68%	71%	85%	80%	80%
CHAUTAUQUA	Lutheran Retirement Home	86%	78%	81%	92%	75%	83%	62%	75%	43%	48%
ONTARIO	M.M. Ewing Continuing Care Center	72%	76%	76%	78%	83%	78%	73%	91%	85%	75%
STEUBEN	Mcauley Manor at Mercycare	89%	84%	84%	85%	85%	85%	85%	85%	92%	96%
MONROE	Park Ridge Nursing Home	94%	96%	91%	92%	94%	92%	92%	96%	93%	na
ERIE	Rosa Coplon Jewish Home and Infirmary	73%	73%	58%	75%	78%	70%	62%	67%	87%	93%
ERIE	Schofield Residence	80%	80%	80%	83%	66%	66%	58%	82%	75%	89%
YATES	Soldiers and Sailors Memorial Hospital Extended Care Unit	100%	100%	100%	na	na	100%	100%	na	83%	na
MONROE	St Anns Community	93%	98%	100%	99%	100%	96%	97%	100%	97%	92%
ERIE	St Catherine Laboure Health Care Center	76%	na	na	76%	68%	na	72%	88%	96%	96%
MONROE	St Johns Health Care Corporation	67%	71%	77%	73%	44%	67%	61%	45%	47%	69%
WAYNE	Wayne Health Care	93%	86%	91%	85%	64%	73%	82%	87%	83%	85%
<b>REGIONAL MEDIAN:</b>		<b>84%</b>	<b>84%</b>	<b>84%</b>	<b>83%</b>	<b>72%</b>	<b>78%</b>	<b>72%</b>	<b>87%</b>	<b>85%</b>	<b>85%</b>